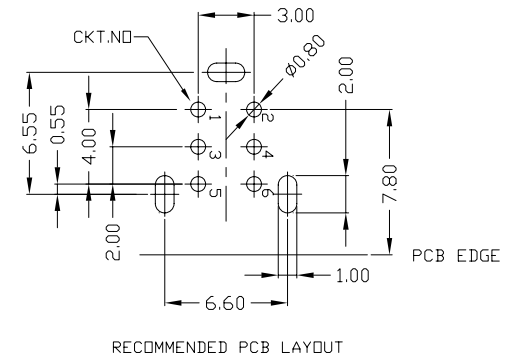
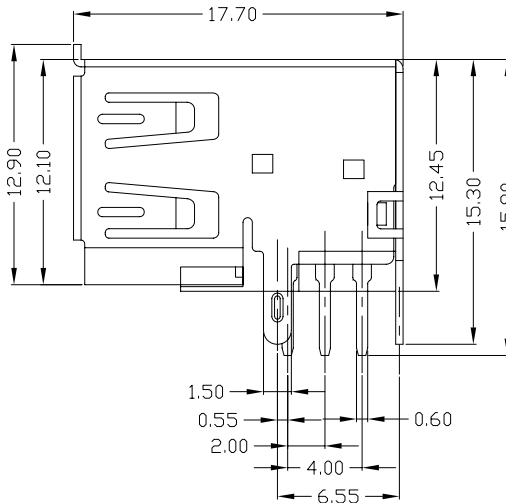
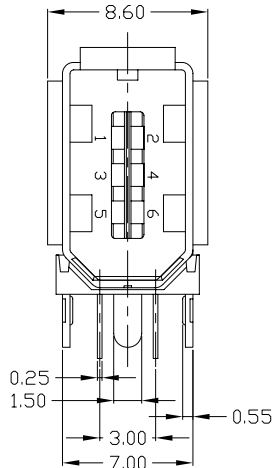
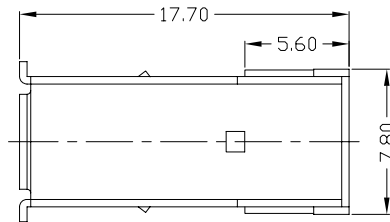




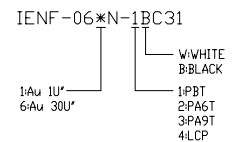
RoHS  
Compliant  
2002/95/EC

REV.	ECN.	NO.	APPD.



- NOTES:
- ELECTRICAL:
    - VOLTAGE CURRENT RATING: 1AMP, 30V AC;
    - INSULATION RESISTANCE: 1000M $\Omega$ MIN;
    - CONTACT RESISTANCE: 30m $\Omega$ MAX;
    - WITHSTANDING VOLTAGE: 500V AC;
    - OPERATING TEMPERATURE: -55°C TO +85°C.
  - Mechanical:
    - Mating Force: 35N MAX
    - Unmating Force: 10N MIN.
  - DIMENSIONS MARKED "▼" TO BE CHECKED BY Q.C & IPQC.

4. PART NO.



Bill of materials:

NO	PARTS	MATERIAL	QTY	FINISHING	X. $\pm 0.35$	X.* $\pm 2^*$	UNITS	东莞市腾兴电子有限公司					
					.X $\pm 0.3$	.X.* $\pm 1^*$	mm						
3	HOUSING	PBT+30%GF	1	UL94V-0	.XX $\pm 0.25$	.XX*	MAT'L	SEE NOTE	TITLE:	PART NO.:			
2	SHELL	COPPER ALLOY	1	PLATED NICKEL	.XXX $\pm 0.15$	.XXX*	FINISH	SEE NOTE	1394 6P F90度侧立式(三边)	IENF-06*N-1BC31			
1	TERMINAL	COPPER ALLOY	6	PLATED GOLD/TIN	THESE DRAWINGS AND SPECIFICATIONS ARE THE PROPERTY OF ACCURATE INNO TECH INC AND SHALL NOT BE REPRODUCED, COPIED OR USED IN ANY MANNER WITHOUT THE PRIOR WRITTEN CONSENT OF ACCURATE INNO TECH INC.			Q'TY	DR: gan 2014/09/20	DWG NO.: AII-C31			
								CHKD: gan 2014/09/20	APPD:	SCALE	SHEET	REV.	CUSTOMER DRAWING
										1:1	1/1	B	