



RoHS
Compliant
2002/95/EC

REV.	ECN.	NO.	APPD.

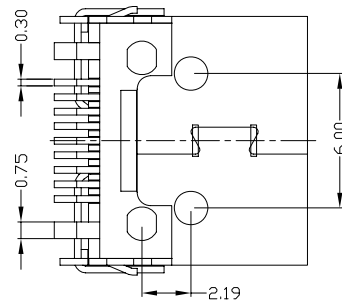
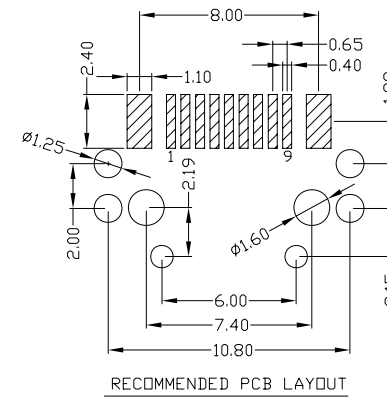
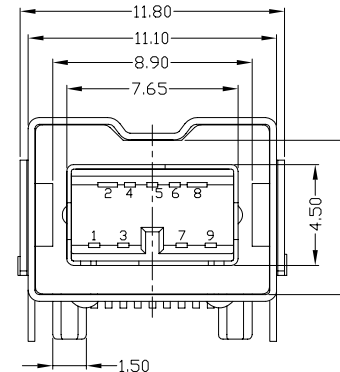
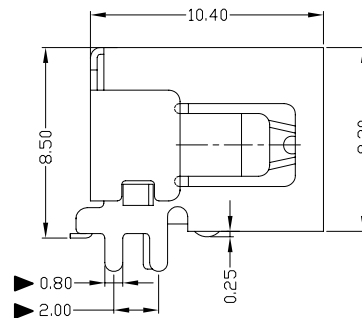
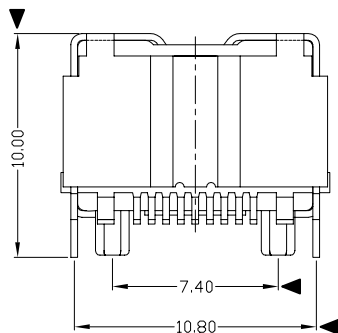
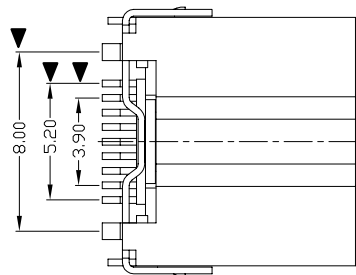
A

B

C

D

E



NOTES:

- ELECTRICAL:
 - VOLTAGE CURRENT RATING: 1AMP,30V AC;
 - INSULATION RESISTANCE: 100MΩ MIN;
 - CONTACT RESISTANCE: 50mΩ MAX;
 - WITHSTANDING VOLTAGE: 300V AC;
 - OPERATING TEMPERATURE:-55°C TO +85°C.
- Mechanical:
 - Mating Force: 30N MAX
 - Unmating Force: 7N MIN.
- DIMENSIONS MARKED "▼" TO BE CHECKED BY Q.C & IPQC.

4.PART NO.

IENF-092N-4BH82

2Au 3U*

W:WHITE
B:BLACK
1:PBT
2:PA6T
3:PA9T
4:LCP

Bill of materials:

NO	PARTS	MATERIAL	QTY	FINISHING	X. ±0.35	X.* ±2*	UNITS	mm	东莞市腾兴电子有限公司			
4	HOUSING	LCP	1	UL94V-0	.X ±0.3	.X* ±1*	MAT'L		TITLE: IEEE 1394 9P/F SMT(平脚) PART NO.: IENF-092N-4BH82 DR: gan 2012/07/02 DWG NO.: AII-H82 CHKD: gan 2012/07/02 APPD:			
3	OUTSIDE SHELL	COPPER ALLOY	1	PLATED NICKEL	.XX ±0.25	.XX*	SEE NOTE					
2	INNER SHELL	COPPER ALLOY	1	PLATED NICKEL	.XXX ±0.15	.XXX*	SEE NOTE					
1	TERMINAL	COPPER ALLOY	9	PLATED GOLD			FINISH					
							Q'TY		SCALE: 1:1 SHEET: 1/1 REV.: B CUSTOMER DRAWING			

THESE DRAWINGS AND SPECIFICATIONS ARE THE PROPERTY OF ACCURATE INNTECH INC AND SHALL NOT BE REPRODUCED, COPIED OR USED IN ANY MANNER WITHOUT THE PRIOR WRITTEN CONSENT OF ACCURATE INNTECH INC.

