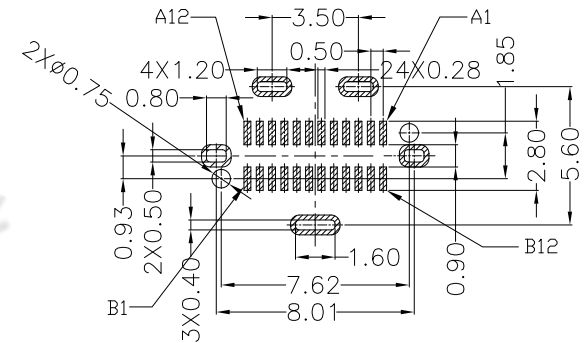
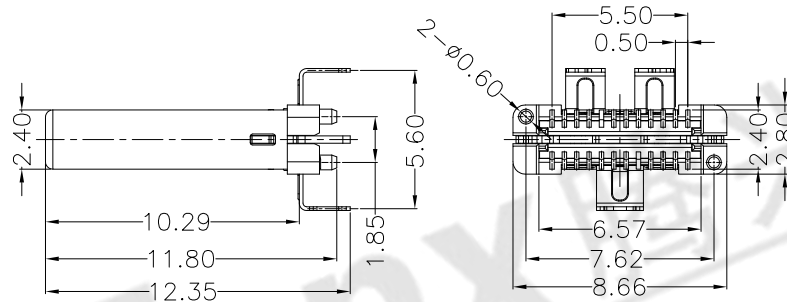
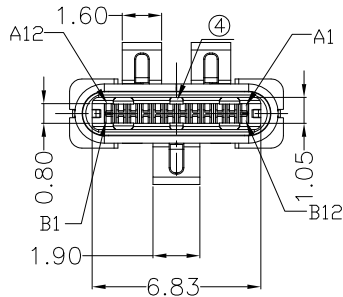
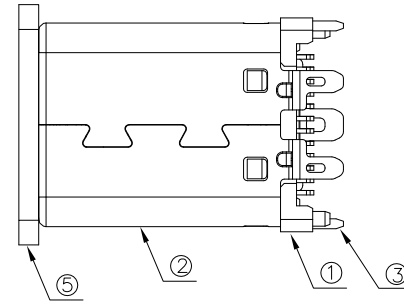
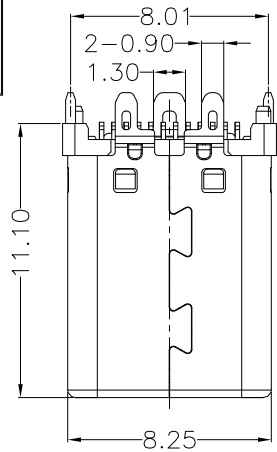


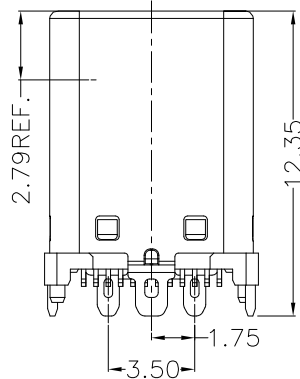


RoHS  
Compliant  
2002/95/EC

REV.	ECN.	NO.	APPD.



RECOMMENDED PCB LAYOUT (t=0.80±0.05)  
COMPONENT SIDE (GENERAL TOLERANCE: ±0.05)



A1	GND	B12	GND
A2	SSTXP1	B11	SSRXP1
A3	SSTXN1	B10	SSRXN1
A4	VBUS	B9	VBUS
A5	CC1	B8	SBU2
A6	DP1	B7	DN2
A7	DN1	B6	DP2
A8	SBU1	B5	CC2
A9	VBUS	B4	VBUS
A10	SSRXN2	B3	SSTXN2
A11	SSRXP2	B2	SSTXP2
A12	GND	B1	GND
PIN	SIGNAL NAME	PIN	SIGNAL NAME

NOTES:

- ELECTRICAL:
  - CURRENT RATING: 3AMP MAX;
  - INSULATION RESISTANCE: 100MΩ MIN;
  - CONTACT RESISTANCE: 40mΩ MAX;
  - WITHSTANDING VOLTAGE: 100V AC;
  - OPERATING TEMPERATURE: -30°C TO +85°C.
- Mechanical:
  - Mating Force: 5N~20N
  - Unmating Force: 8N~20N
  - Durability: 10,000 cycles
- DIMENSIONS MARKED "▼"  
TO BE CHECKED BY Q.C & IPQC.

4.PART NO.

USCM-24\*N-4BQS20  
 W/WHITE  
 B/BLACK  
 1Au 1U\*  
 2Au 3U\*  
 5Au 15U\*  
 6Au 30U\*  
 1PBT  
 2PA6T  
 3PA9T  
 4LCP

6	CONTACT	COPPER ALLOY	24	PLATED GOLD/NICKEL	X. ±0.35	X.' ±2*	UNITS	东莞市腾兴电子有限公司				
5	COVER	LCP+30%GF	1	UL94V-0	.X ±0.30	.X' ±1*	mm					
4	SPRING	STAINLESS STEEL	2		.XX ±0.20	.XX' ±0.5*	MAT'L	SEE NOTE	TITLE: USB C M TYPE 直立式外壳3支脚 脚距1.75 H=11.10mm L=12.35mm		PART NO.:	
3	LATCH	STAINLESS STEEL	1	PLATED TIN/NICKEL	.XXX ±0.10	.XXX*	FINISH	SEE NOTE	DR: Ricky 2017/11/16		USCM-24XN-4BQS20	
2	SHELL	STAINLESS STEEL	1	PLATED NICKEL			Q'TY	SEE NOTE	CHKD: Ricky 2017/11/16		DWG NO.:	
1	HOUSING	LCP+30%GF	2	UL94V-0					APPD: Ricky 2017/11/16		AII-QS20	
NO	PARTS	MATERIAL	QTY	FINISHING					SCALE	SHEET	REV.	CUSTOMER
									1:1	1/1	B	DRAWING

THESE DRAWINGS AND SPECIFICATIONS ARE THE PROPERTY OF ACCURATE INNOTECH INC AND SHALL NOT BE REPRODUCED, COPIED OR USED IN ANY MANNER WITHOUT THE PRIOR WRITTEN CONSENT OF ACCURATE INNOTECH INC

