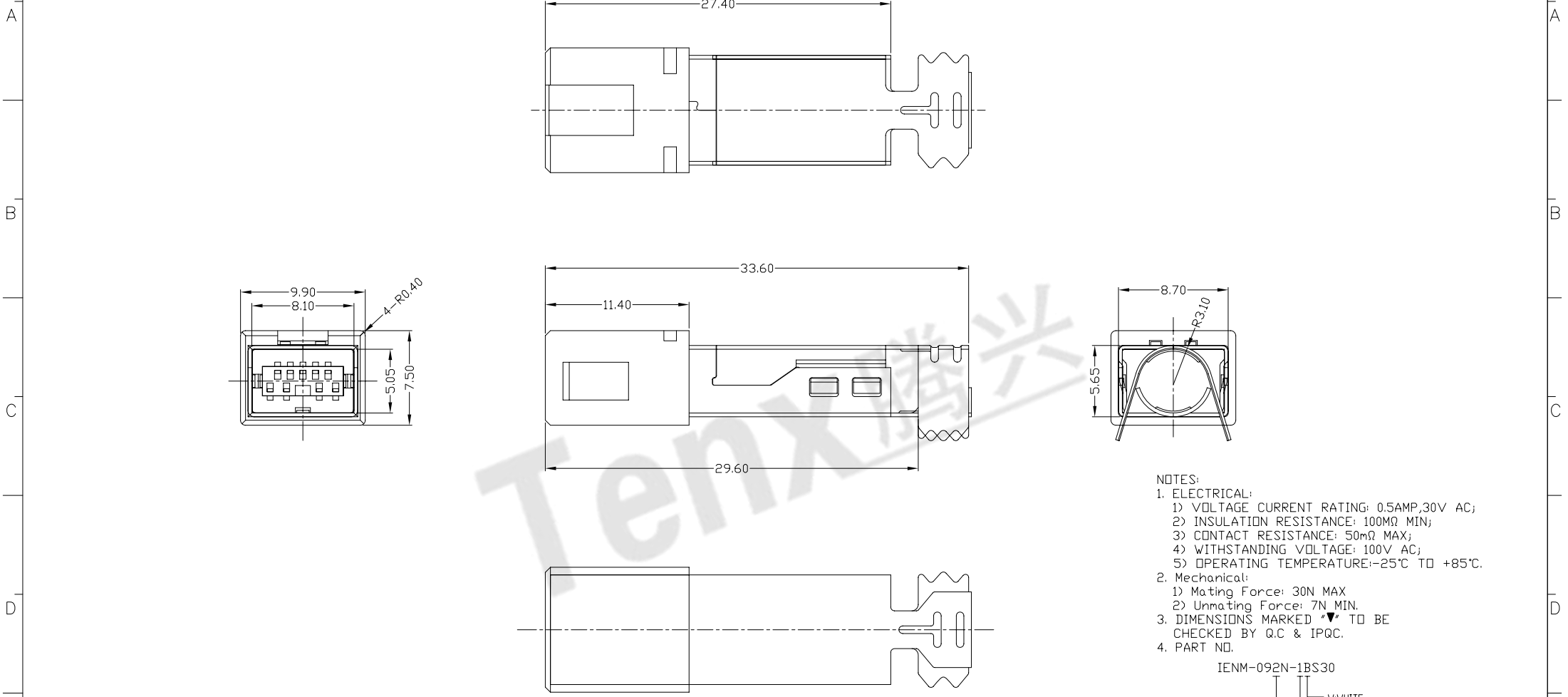


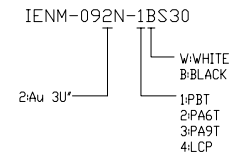


RoHS  
Compliant  
2002/95/EC

REV	LTR	DESCRIPTION	DATE	REVISER	APPD

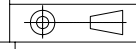


- NOTES:
- ELECTRICAL:
    - VOLTAGE CURRENT RATING: 0.5AMP,30V AC;
    - INSULATION RESISTANCE: 100MΩ MIN;
    - CONTACT RESISTANCE: 50mΩ MAX;
    - WITHSTANDING VOLTAGE: 100V AC;
    - OPERATING TEMPERATURE:-25°C TO +85°C.
  - Mechanical:
    - Mating Force: 30N MAX
    - Unmating Force: 7N MIN.
  - DIMENSIONS MARKED '▼' TO BE CHECKED BY Q.C & IPQC.
  - PART NO.



Bill of materials:

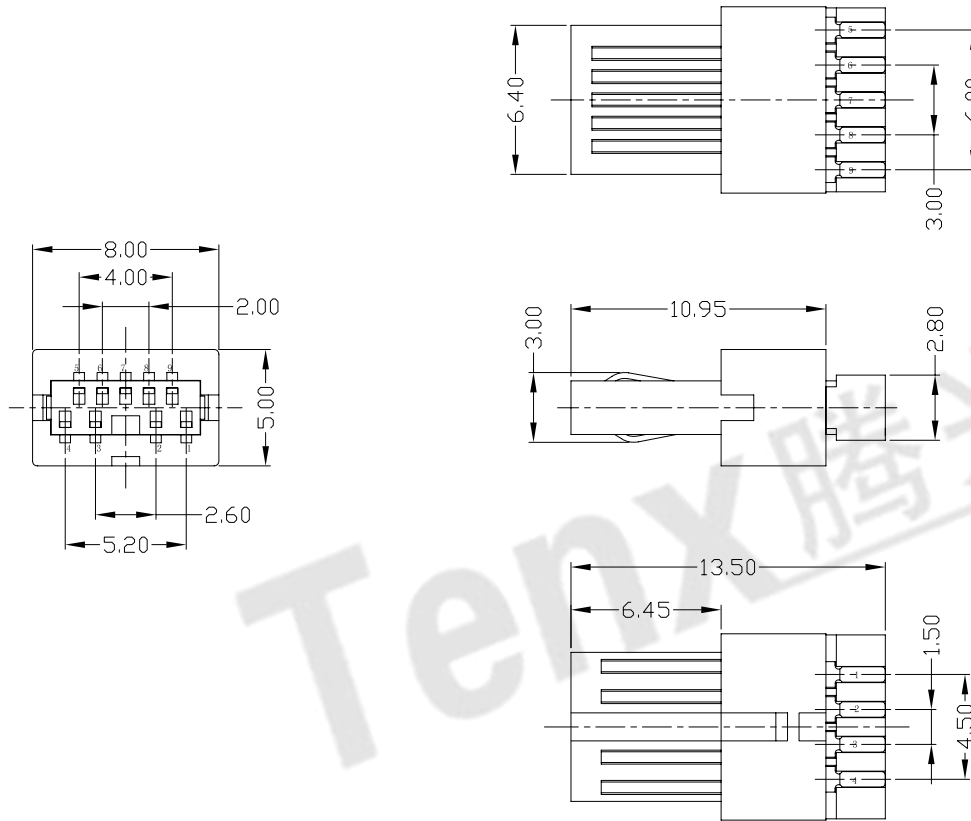
NO	PARTS	MATERIAL	QTY	FINISHING	UNITS	mm	东莞市腾兴电子有限公司						
3	HOUSING	PBT+30%GF	1	UL94V-0	X. ±0.35	X.* ±2'	MAT'L	TITLE: IEEE 1394 9P M 焊线四件套		PART NO.: IENM-092N-1BS30			
2	SHELL	SPCC	1	PLATED NICKEL	.X ±0.3	.X* ±1'						SEE NOTE	
1	TERMINAL	COPPER ALLOY	9	PLATED GOLD/TIN	.XX ±0.25	.XX*	FINISH	DR: gan 2015/11/10		DWG NO.: AII-S30			
					.XXX ±0.15	.XXX*	SEE NOTE	CHKD: gan 2015/11/10		SCALE	SHEET	REV.	CUSTOMER
					THESE DRAWINGS AND SPECIFICATIONS ARE THE PROPERTY OF ACCURATE INNDTECH INC AND SHALL NOT BE REPRODUCED, COPIED OR USED IN ANY MANNER WITHOUT THE PRIOR WRITTEN CONSENT OF ACCURATE INNDTECH INC.		Q'TY	APPD:		1:1	1/1	B	DRAWING





RoHS  
Compliant  
2002/95/EC

REV	LTR	DESCRIPTION	DATE	REVISER	APPD



NOTES:

- ELECTRICAL:
  - VOLTAGE CURRENT RATING: 0.5AMP,30V AC;
  - INSULATION RESISTANCE: 100MΩ MIN;
  - CONTACT RESISTANCE: 50mΩ MAX;
  - WITHSTANDING VOLTAGE: 100V AC;
  - OPERATING TEMPERATURE:-25°C TO +85°C.
- Mechanical:
  - Mating Force: 30N MAX
  - Unmating Force: 7N MIN.
- DIMENSIONS MARKED "▼" TO BE CHECKED BY Q.C & IPQC.

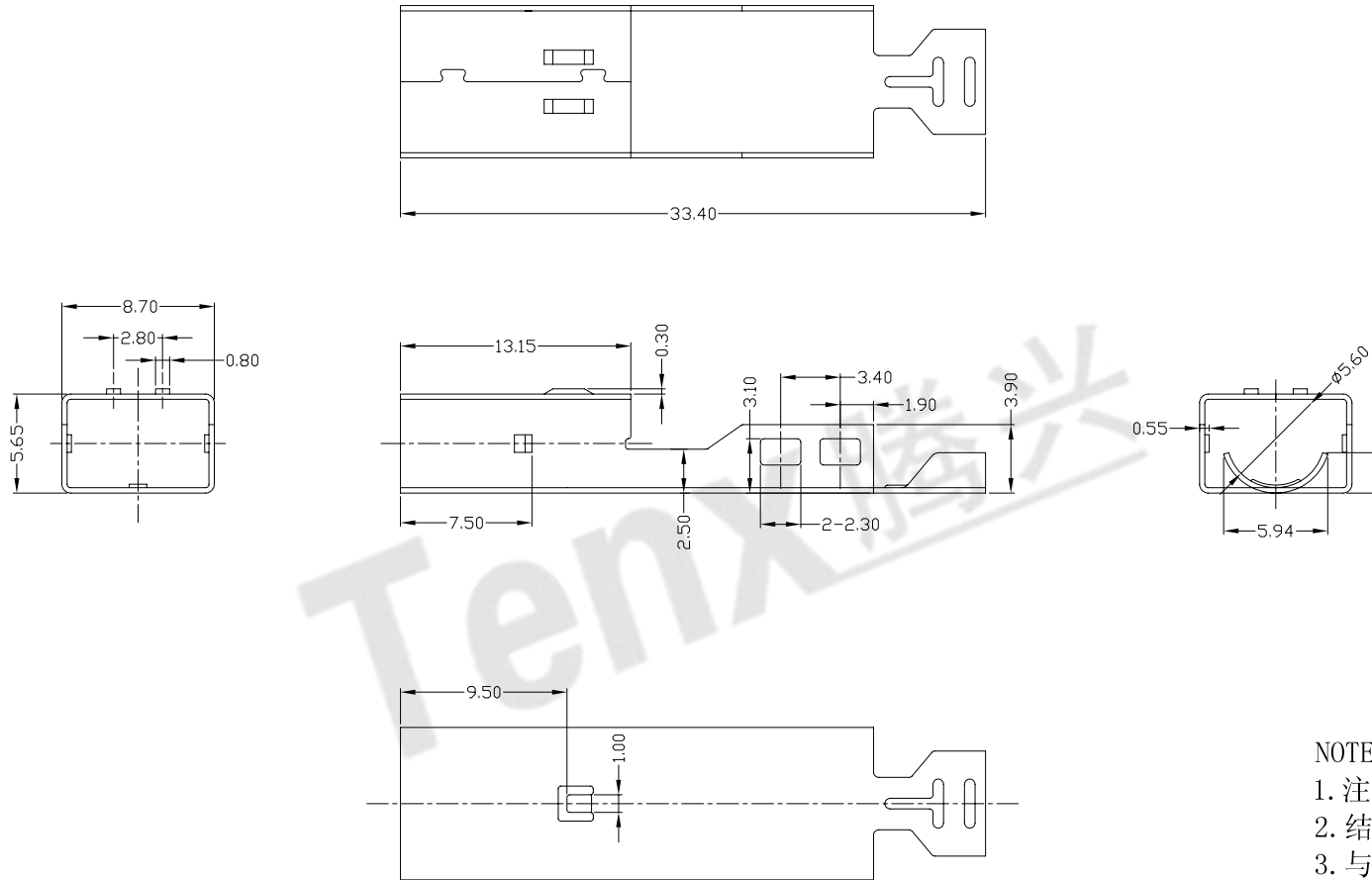
Bill of materials:

NO	PARTS	MATERIAL	QTY	FINISHING	UNITS	mm	东莞市腾兴电子有限公司						
2	HOUSING	PBT+30%GF	1	UL94V-0	X. ±0.35	X.* ±2'	MAT'L	TITLE: IEEE 1394 9P M 主体		PART NO.: IENM-092N-1BS30			
1	TERMINAL	COPPER ALLOY	9	PLATED GOLD/TIN	.X ±0.3	.X* ±1'	SEE NOTE	DR: gan 2015/11/10		DWG NO.: AII-S30			
					.XX ±0.25	.XX*	FINISH	CHKD: gan 2015/11/10		SCALE	SHEET	REV.	CUSTOMER
					.XXX ±0.15	.XXX*	SEE NOTE	APPD:		1:1	1/1	B	DRAWING
					THESE DRAWINGS AND SPECIFICATIONS ARE THE PROPERTY OF ACCURATE INNDTECH INC AND SHALL NOT BE REPRODUCED, COPIED OR USED IN ANY MANNER WITHOUT THE PRIOR WRITTEN CONSENT OF ACCURATE INNDTECH INC.		Q'TY						



RoHS  
Compliant  
2002/95/EC

REV	LTR	DESCRIPTION	DATE	REVISER	APPD



NOTES:

1. 注意外形不能有明显的变形.
2. 结合处紧密, 不能变形. 错位.
3. 与后盖组装不松动.
4. 与外套组装不松动.
5. PLATING NICKEL 120u".

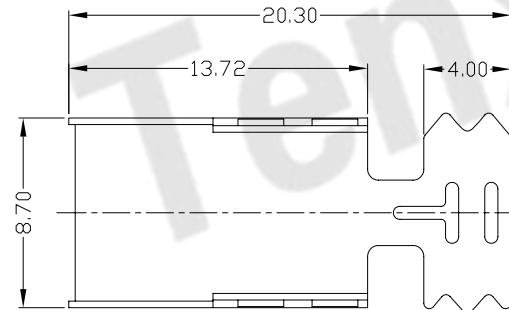
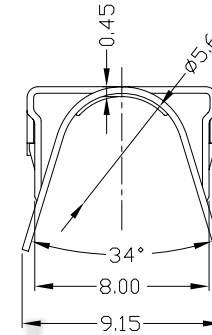
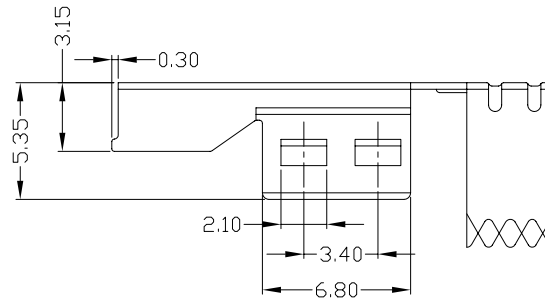
Bill of materials:

NO	PARTS	MATERIAL	QTY	FINISHING	UNITS	MAT'L	FINISH	Q'TY	TITLE:	PART NO.:	DR:	CHKD:	APPD:	SCALE	SHEET	REV.	CUSTOMER DRAWING	
					X. ±0.35	X.* ±2'				<b>东莞市腾兴电子有限公司</b> IEEE 1394 9P M 外壳 IENM-092N-1BS30 AII-S30								
					.X ±0.3	.X* ±1'	SEE NOTE											
					.XX ±0.25	.XX*	SEE NOTE											
					.XXX ±0.15	.XXX*	SEE NOTE											
					THESE DRAWINGS AND SPECIFICATIONS ARE THE PROPERTY OF ACCURATE INNDTECH INC. AND SHALL NOT BE REPRODUCED, COPIED OR USED IN ANY MANNER WITHOUT THE PRIOR WRITTEN CONSENT OF ACCURATE INNDTECH INC.													
1	SHELL	SPCC	1	PLATED NICKEL	mm				gan 2015/11/10	IENM-092N-1BS30	gan 2015/11/10			1:1	1/1	B		



RoHS  
Compliant  
2002/95/EC

REV	LTR	DESCRIPTION	DATE	REVISER	APPD



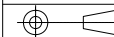
NOTES:

1. 注意外形不能有明显的变形.
2. 结合处紧密, 不能变形. 错位.
3. 与外壳组装不松动.
4. 与外套组装不松动.
5. PLATING NICKEL 120u".

Bill of materials:

NO	PARTS	MATERIAL	QTY	FINISHING	UNITS	MAT'L	DESCRIPTION	PART NO.	SCALE	SHEET	REV.	CUSTOMER DRAWING
1	SHELL	SPCC	1	PLATED NICKEL	mm	SEE NOTE	IEEE 1394 9P M 外壳后盖	IENM-092N-1BS30	1:1	1/1	B	
						SEE NOTE	DR: gan 2015/11/10					
						SEE NOTE	CHKD: gan 2015/11/10					
						Q'TY	APPD:					

THESE DRAWINGS AND SPECIFICATIONS ARE THE PROPERTY OF ACCURATE INNDTECH INC. AND SHALL NOT BE REPRODUCED, COPIED OR USED IN ANY MANNER WITHOUT THE PRIOR WRITTEN CONSENT OF ACCURATE INNDTECH INC.



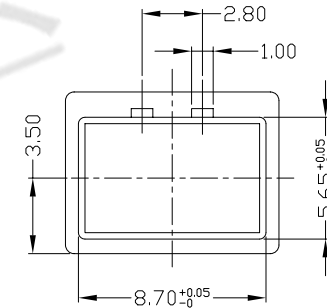
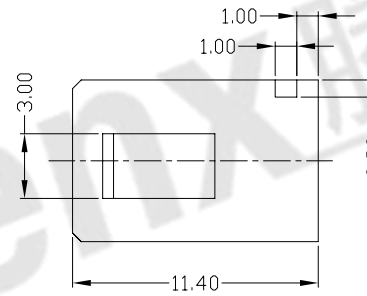
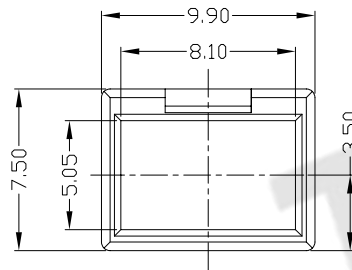
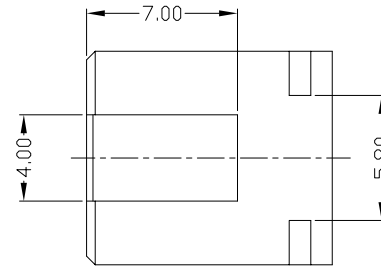
东莞市腾兴电子有限公司





RoHS  
Compliant  
2002/95/EC

REV	LTR	DESCRIPTION	DATE	REVISER	APPD



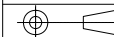
NOTE:

1. 胶芯须与铁壳适配;
2. 外观不能有缩水, 刮伤, 变形等不良现象; 毛边最大0.05MM;

Bill of materials:

NO	PARTS	MATERIAL	QTY	FINISHING	UNITS	MAT'L	FINISH	Q'TY	DESCRIPTION	DATE	REVISER	APPD
1	HOUSING	PBT+30%GF	1	UL94V-0	mm	SEE NOTE	SEE NOTE	1	东莞市腾兴电子有限公司	2015/11/10	gan	gan
									TITLE: IEEE 1394 9P M 护套A款			
									PART NO.: IENM-092N-1BS30			
									DR: gan 2015/11/10			
									DWG NO.: AII-S30			
									CHKD: gan 2015/11/10			
									SCALE: 1:1			
									SHEET: 1/1			
									REV: B			
									CUSTOMER DRAWING			

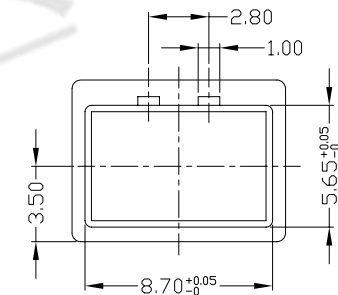
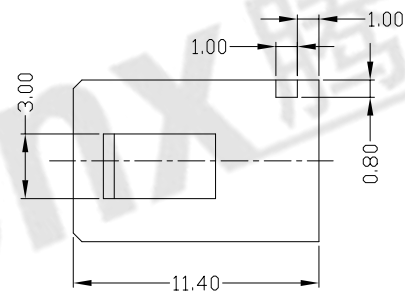
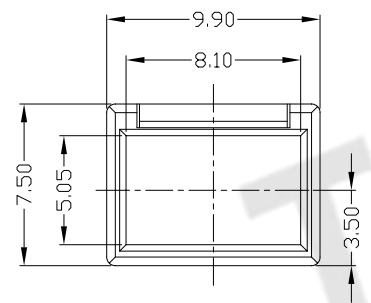
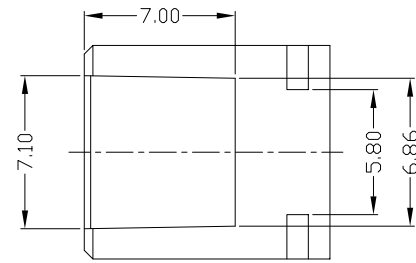
THESE DRAWINGS AND SPECIFICATIONS ARE THE PROPERTY OF ACCURATE INNOVATECH INC. AND SHALL NOT BE REPRODUCED, COPIED OR USED IN ANY MANNER WITHOUT THE PRIOR WRITTEN CONSENT OF ACCURATE INNOVATECH INC.





RoHS  
Compliant  
2002/95/EC

REV	LTR	DESCRIPTION	DATE	REVISER	APPD



NOTE:

1. 胶芯须与铁壳适配;
2. 外观不能有缩水, 刮伤, 变形等不良现象; 毛边最大0.05MM;

Bill of materials:

NO	PARTS	MATERIAL	QTY	FINISHING	DIMENSIONS		UNITS	MAT'L	东莞市腾兴电子有限公司					
					X. ±0.35	X.* ±2'			mm	TITLE:	PART NO.:			
1	HOUSING	PBT+30%GF	1	UL94V-0	.X ±0.3	.X* ±1'	SEE NOTE	SEE NOTE	IEEE 1394 9P M 护套B款		IENM-092N-1BS30			
					.XX ±0.25	.XX*	SEE NOTE	SEE NOTE	DR: gan 2015/11/10		DWG NO.: AII-S30			
					.XXX ±0.15	.XXX*	SEE NOTE	SEE NOTE	CHKD: gan 2015/11/10		SCALE	SHEET	REV.	CUSTOMER DRAWING
					THESE DRAWINGS AND SPECIFICATIONS ARE THE PROPERTY OF ACCURATE INNDTECH INC. AND SHALL NOT BE REPRODUCED, COPIED OR USED IN ANY MANNER WITHOUT THE PRIOR WRITTEN CONSENT OF ACCURATE INNDTECH INC.			Q'TY	APPD:	1:1	1/1	B		

