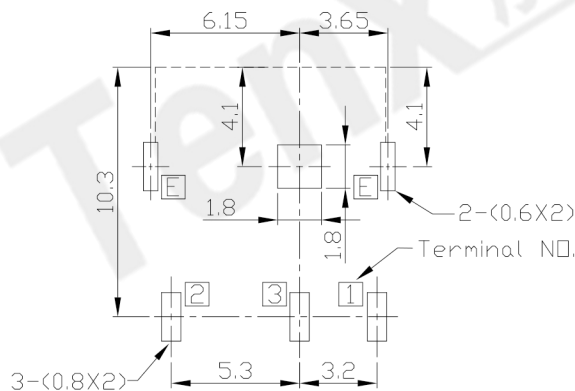
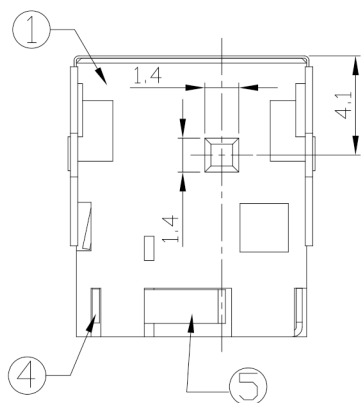
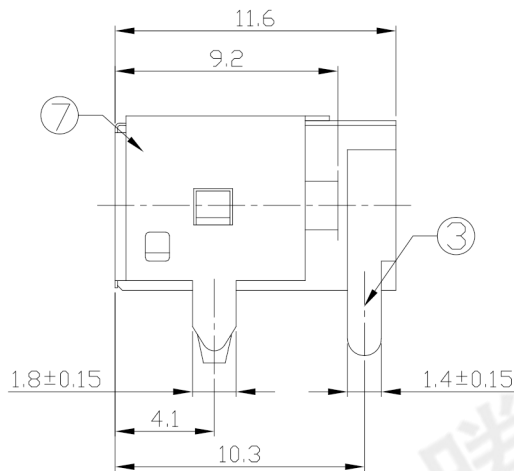
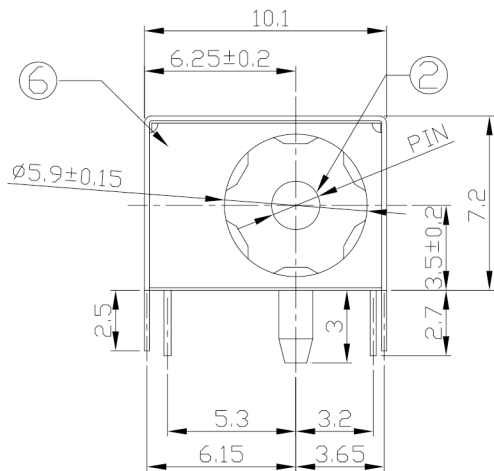




RoHS
Compliant
2002/95/EC

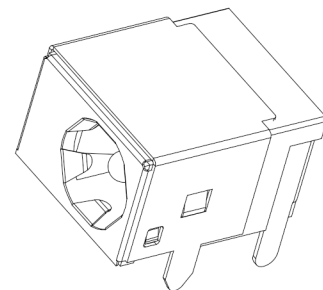
DIMENSIONS



RECOMMENDED P.C.B. LAYOUT
UNSPECIFIED TOLERANCE:±0.05
(COPPER-SIDED VIEW)

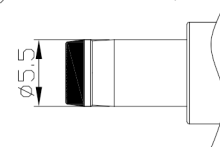
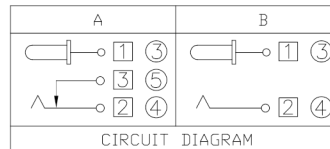
MODEL CODE:

- DCB0-0044Q- A □ 9T BK S 0 4
 (1) (2) (3)(4) (5) (6) (7)(8) (9)
 (1):Series type:DIP DC POWER JACK.
 (2):Series No.
 (3):Schematic option: A , B
 (4):Center pin diameter:
 G=φ1.65 , H=φ2.0 , J=φ2.5
 (5):Material of housing:
 9T=PA9T(Standard) , PB=PBT
 (6):Housing color:
 BK=Black(Only)
 (7):Terminal plating
 S=Silver(Ag)(Standard)
 T=Tin(Sn)
 G=Gold(Au)
 (8):Special option:
 0=No special option
 (9):Packing mode:
 1=Reel packing
 3=Plastic box packing
 4=Bag packing



SPECIFICATION:

- Rating : DC 25V 3A;
- Contact resistance: ≤50mΩ;
After test:≤100mΩ
- Insulation resistance: ≥100MΩ (DC500V);
After test:≥50MΩ
- Withstand voltage: 500VAC ;
- Insertion and extraction force: 3-30N;
- life test: 5,000 cycles;
- Operation temperature range:-20°C~70°C;
- Preservative temperature range:-40°C~85°C;



DC MATE PLUG

Model No.	G	H	J
CENTER PIN	φ1.65	φ2.0	φ2.5

○: ITEM NO. □: TERMINAL NO.

NO.	PARTS	MATERIAL	Q'TY	FINISHING
7	Ground shield	Copper Alloy	1	Ni-Plating
6	Shield plate	Stainless steel	1	Ni-Plating
5	Shunt Terminal	Copper Alloy	1	Ag-Plating
4	Tip Spring	Copper Alloy	1	Ag-Plating
3	Center pin contact	Copper Alloy	1	Ag-Plating
2	Center pin	Copper Alloy	1	Ni-Plating
1	Housing	PBT/PA9T	1	

THESE DRAWINGS AND SPECIFICATIONS ARE THE PROPERTY OF ACCURATE INNOVATECH INC AND SHALL NOT BE REPRODUCED, COPIED OR USED IN ANY MANNER WITHOUT THE PRIOR WRITTEN CONSENT OF ACCURATE INNOVATECH INC.

TOLERANCE	ANGLES	UNITS	mm
±0.3	±2°	MAT'L	
		SEE NOTE	
		FINISH	
		SEE NOTE	
		Q'TY	

东莞市腾兴电子有限公司			
TITLE: DIP DC POWER JACK		PART NO.: DCB0-0044Q	
DR: Ricky 2019/04/30		DWG NO.: AB0-0044Q	
CHKD: Ricky 2019/04/30		SCALE	SHEET
APPD:		1:1	1/1
		REV. A	CUSTOMER DRAWING