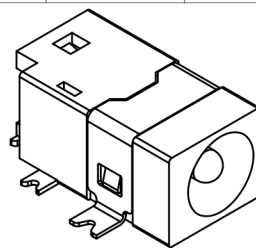




RoHS  
Compliant  
2002/95/EC

Halogen Free

DIMENSIONS



REV.	ECN.	NO.	APPD.

MODEL CODE:

DCT0-0068DS- A G 10 BK S 0 1

(1) (2) (3)(4)(5) (6) (7)(8) (9)

(1):Series type:SMD DC POWER JACK.

(2):Series No.

(3):Schematic option: A

(4):Center pin diameter:

G=Ø1.65mm

(5):Material of housing:

10=PA10T

(6):Housing color:

BK=Black

(7):Terminal plating:

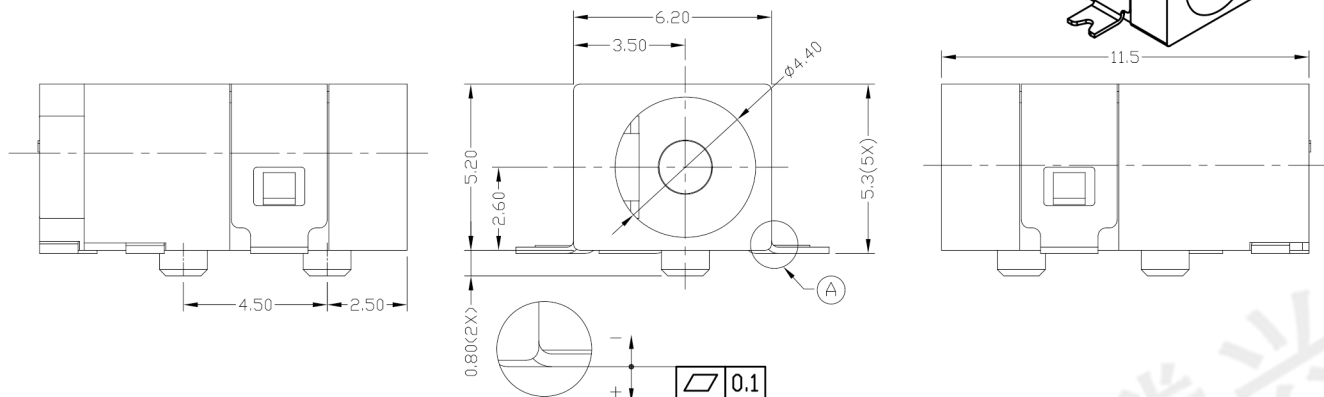
S=Silver(Ag)

(8):Special option:

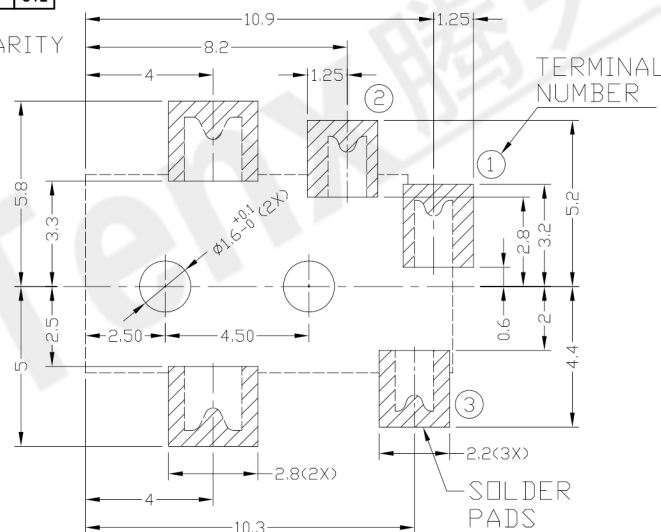
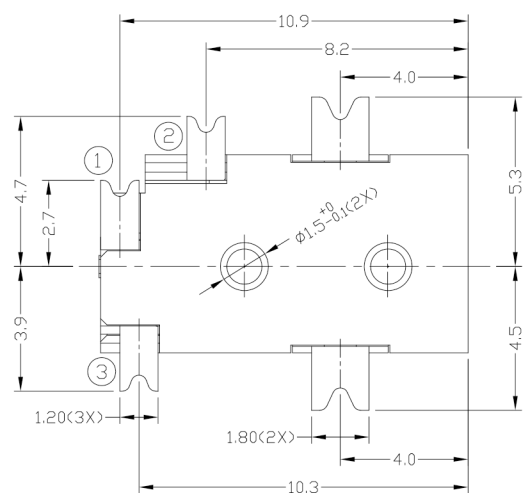
0=No special option

(9):Packing mode:

1=Reel packing



A DETAIL COPLANARITY



RECOMMENDED P.C.B. LAYOUT  
TOLERANCE:±0.05  
(TOP VIEW)

Specification:

1.Rating : 2.5A/16V DC Max.

2.Contact resistance : ≤30mΩ

After test:≤60mΩ

3.Insulation resistance : ≥100MΩ (DC500V).

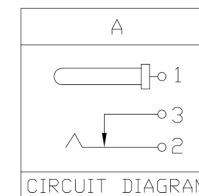
After test:≥50MΩ

4.Withstanding voltage : 500VAC.

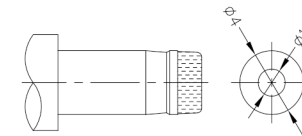
5.Insertion and extraction force : 0.3~3Kgs..

6.Life test : 5,000cycles min.

7.Operation temperature range:-25℃~85℃.



CIRCUIT DIAGRAM



DC MATE PLUG

MODEL NO.	G
CENTER PIN	Ø1.65mm

Bill of materials:

NO.	PARTS	MATERIAL	Q'TY	FINISHING
5	TERMINAL 1	BRASS	1	SILVER PLATED
4	TERMINAL 2	COPPER ALLOY	1	SILVER PLATED
3	TERMINAL 3	BRASS	1	SILVER PLATED
2	SHIELD	COPPER ALLOY	1	SILVER PLATED
1	HOUSING	PA10T	1	UL94V-0

TOLERANCE	ANGLES	UNITS	mm
±0.3	±2°	MAT'L	SEE NOTE
		FINISH	SEE NOTE
		Q'TY	

东莞市腾兴电子有限公司

TITLE:  
SMD DC POWER JACK

PART NO.:  
DCT0-0068DS

DR: Ricky 2018/10/04

DWG NO.:  
AT0-0068DS

CHKD: Ricky 2018/10/04

APPD:

SCALE	SHEET	REV.	CUSTOMER DRAWING
1:1	1/1	A	

THESE DRAWINGS AND SPECIFICATIONS ARE THE PROPERTY OF ACCURATE INNOVATECH INC AND SHALL NOT BE REPRODUCED, COPIED OR USED IN ANY MANNER WITHOUT THE PRIOR WRITTEN CONSENT OF ACCURATE INNOVATECH INC.

