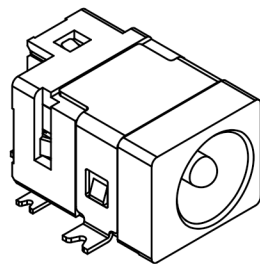




RoHS
Compliant
2002/95/EC

Halogen Free

DIMENSIONS



MODEL CODE:

DCT0-096DHS- A G 10 BK S 0 1

(1) (2) (3)(4)(5) (6) (7)(8) (9)

(1):Series type:SMD DC POWER JACK.

(2):Series No.

(3):Schematic option: A

(4):Center pin diameter:
G=Ø1.65mm

(5):Material of housing:
10=PA10T

(6):Housing color:
BK=Black

(7):Terminal plating:
S=Silver(Ag)

(8):Special option:
0=No special option

(9):Packing mode:
1=Reel packing

Specification:

1.Rating : 5A/16V DC Max.

2.Contact resistance: ≤30mΩ
After test:≤60mΩ

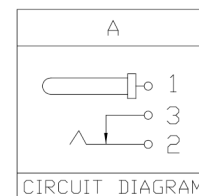
3.Insulation resistance: ≥100MΩ (DC500V).
After test:≥50MΩ

4.Withstanding voltage: 500VAC.

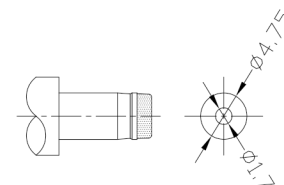
5.Insertion and extraction force: 0.3~3Kgs.

6.Life test: 5,000cycles min.

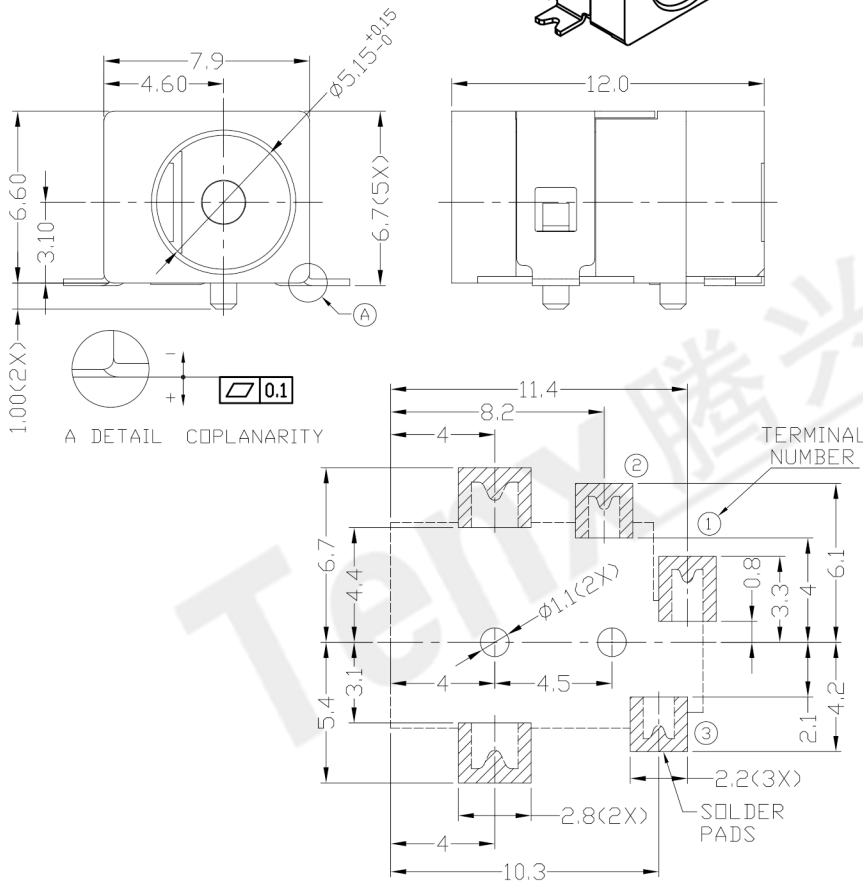
7.Operation temperature range:-25℃~85℃.



MODEL NO.	G
CENTER PIN	Ø1.65mm



DC MATE PLUG



RECOMMENDED P.C.B. LAYOUT
TOLERANCE:±0.05
(TOP VIEW)

Bill of materials:

NO.	PARTS	MATERIAL	Q'TY	FINISHING	TOLERANCE	ANGLES	UNITS	mm
5	TERMINAL 1	BRASS	1	SILVER PLATED	±0.3	±2°	MAT'L	SEE NOTE
4	TERMINAL 2	COPPER ALLOY	1	SILVER PLATED				
3	TERMINAL 3	BRASS	1	SILVER PLATED				
2	SHIELD	BRASS	1	NICKEL PLATED				
1	HOUSING	PA10T	1	UL94V-0				
							FINISH	SEE NOTE
							Q'TY	CHKD: Ricky 2018/10/08
								APPD:

THESE DRAWINGS AND SPECIFICATIONS ARE THE PROPERTY OF ACCURATE INNOVATECH INC AND SHALL NOT BE REPRODUCED, COPIED OR USED IN ANY MANNER WITHOUT THE PRIOR WRITTEN CONSENT OF ACCURATE INNOVATECH INC.

东莞市腾兴电子有限公司

TITLE: SMD DC POWER JACK		PART NO.: DCT0-096DHS	
DR: Ricky 2018/10/08		DWG NO.: AT0-096DHS	
SCALE	SHEET	REV.	CUSTOMER DRAWING
1:1	1/1	A	