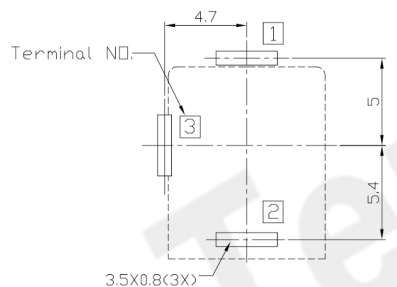
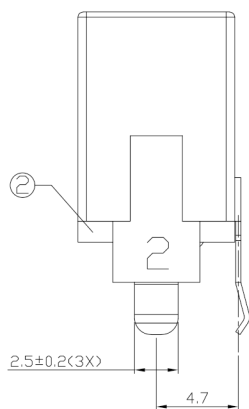
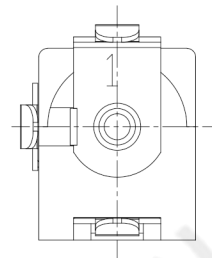
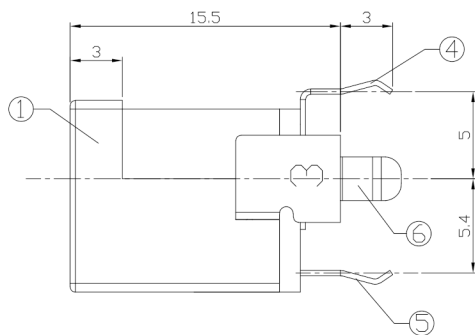
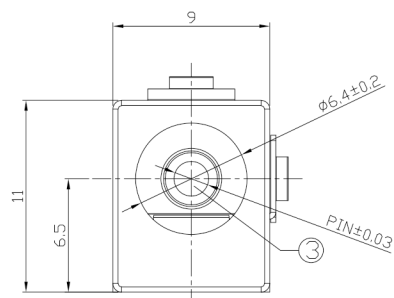




RoHS Compliant
2002/95/EC

REV.	ECN.	NO.	APPD.

DIMENSIONS



RECOMMENDED P.C.B. LAYOUT
UNSPECIFIED TOLERANCE: ± 0.05
(BOTTOM VIEW)

MODEL CODE:

DCB0-00130- A □ PB BK I 0 4

(1) (2) (3)(4) (5) (6) (7)(8) (9)

(1):Series type:DIP DC POWER JACK.

(2):Series No.

(3):Schematic option: A , B

(4):Center pin diameter:

H= $\phi 2.0$, I= $\phi 2.35$, J= $\phi 2.5$

(5):Material of housing:

PB=PBT (Standard)

(6):Housing color:

BK=Black

(7):Terminal plating

T=Tin(Sn)

(8):Special option:

0=No special option

(9):Packing mode:

4=Bag packing

Specification:

1.Rating :DC 20V 2.5A.

2.Contact resistance : $\leq 30m\Omega$

After test: $\leq 50m\Omega$

3.Insulation resistance : $\geq 100M\Omega$ (500VDC).

After test: $\geq 50M\Omega$

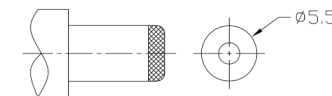
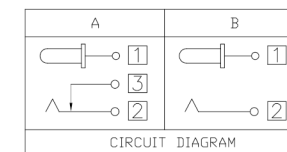
4.Withstanding voltage: 500VAC .

5.Insertion and extraction force: 3N~30N.

6.life test: 5000cycles min.

7. Operation temperature range: $-20^{\circ}C \sim 70^{\circ}C$.

8.Preservative temperature range: $-40^{\circ}C \sim 85^{\circ}C$.



DC MATE PLUG

Model No.	H	I	J
CENTER PIN	$\phi 2.0$	$\phi 2.35$	$\phi 2.5$

○: ITEM NO. □: TERMINAL NO.

NO.	PARTS	MATERIAL	Q'TY	FINISHING	TOLERANCE	ANGLES	UNITS	mm
⑥	Shunt terminal ③	Brass t=0.3	1	Tin plating	±0.3	±2°	MAT'L	SEE NOTE
⑤	Tip spring ②	Phosphor bronze t=0.3	1	Tin plating				
④	Center pin terminal ①	Brass t=0.3	1	Tin plating	FINISH	SEE NOTE	Q'TY	SEE NOTE
③	Center pin ①	Copper alloy	1	Nickel plating				
②	Cover	PF	1					
①	Housing	PBT	1	Black	THESE DRAWINGS AND SPECIFICATIONS ARE THE PROPERTY OF ACCURATE INNOTECH INC AND SHALL NOT BE REPRODUCED, COPIED OR USED IN ANY MANNER WITHOUT THE PRIOR WRITTEN CONSENT OF ACCURATE INNOTECH INC.			
NO.	PARTS	MATERIAL	Q'TY	FINISHING				

东莞市腾兴电子有限公司

TITLE: DIP DC POWER JACK PART NO.: DCB0-00130

DR: Ricky 2019/03/07 DWG NO.: AB0-00130

CHKD: Ricky 2019/03/07 SCALE SHEET REV. CUSTOMER DRAWING

APPD: 1:1 1/1 A