

SPECIFICATIONS

CONTACT RATING: AC 125V 6A, AC 250V 3A, DC 30V 3A

MECHANICAL LIFE: 100,000 make-and-break cycles
DC 10V & 0.1mA.

CONTACT RESISTANCE: 10 mΩ max.

INSULATION RESISTANCE: 500V 500 MΩ min.

DIELECTRIC STRENGTH: 1,000 Vrms min. @sea level.

OPERATING TEMPERATURE: -30°C to 85°C.

WATER-RESISTANCE: 100 make-and-break cycles min at 10 cm depth for T12 actuator.

MATERIALS

CASE: Diallyl phthalate (DAP) (UL94v-0).

ACTUATOR: Brass,chrome plated.

BUSHING: Brass,nickel plated.

HOUSING: Stainless Steel.

SWITCH SUPPORT: Brass,tin plated.

TERMINAL/CONTACT: Brass,with silver or gold plated.(See Page 23)



HOW TO ORDER

MODEL NO.	ACTUATOR	BUSHING	TERMINATIONS	TERMINAL PLATING	SEAL	RoHS SOLDERING
□□□□	□□	□□□	□□□	□	□	□
Model NO.	Actuator	Bushing	Terminations	Terminal plating	Seal	RoHS soldering
1FS1 SP On-None-On	T1 10.5 high	B6 8.00 high	M1 Solder Lug	Q Silver	E EPOXY (std)	□ RoHS Compliant
1FS2 SP On-None-Mom.	T2 5.4 high	BA1 9.00 high	M2 PC thru-hole	R Gold	N NO EPOXY	S RoHS & Lead Free
1FS3 SP On- Off -On	T3 14.2 high			C Gold over silver		
1FS4 SP Mom.-Off-Mom.	T4 16.4 high					
1FS5 SP On- Off -Mom.	T5 21.4 high					
1FD1 DP On-None-On	T6 11.5 high					
1FD2 DP On-None-Mom.	T61 21.5 high					
1FD3 DP On- Off -On	T12 11.2 high					
1FD4 DP Mom.-Off-Mom.						
1FD5 DP On- Off -Mom.						

1F Series

Miniature Toggle Switches

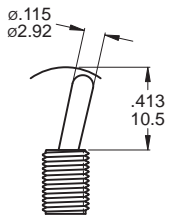
SWITCH FUNCTION

NO. POLES	MODEL NO.	SWITCH FUNCTION			CONNECTED TERMINALS / SCHEMATIC		
		POS.1	POS.2	POS.3	POS.1	POS.2	POS.3
SP	1FS1	ON	NONE	ON	2-3	N/A	2-1
	1FS2	ON	NONE	MOM			
	1FS3	ON	OFF	ON			
	1FS4	MOM	OFF	MOM			
	1FS5	ON	OFF	MOM			
DP	1FD1	ON	NONE	ON	2-3,5-6	N/A	2-1,5-4
	1FD2	ON	NONE	MOM			
	1FD3	ON	OFF	ON			
	1FD4	MOM	OFF	MOM			
	1FD5	ON	OFF	MOM			

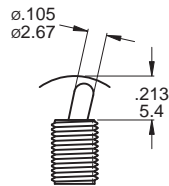
MOM=MOMENTARY

ACTUATOR OPTIONS

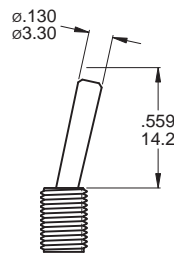
T1 STD



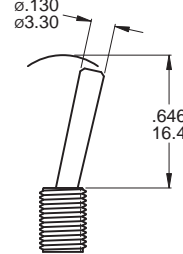
T2



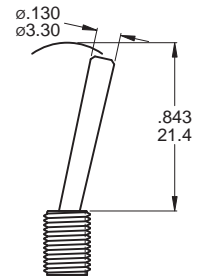
T3



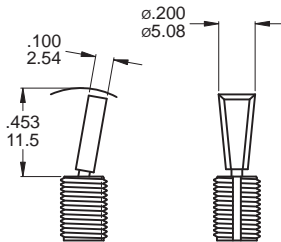
T4



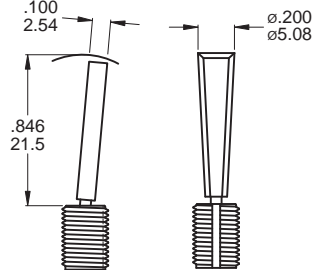
T5



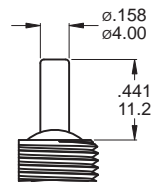
T6 FLATTED WITH ANTIROTATION



T61



T12

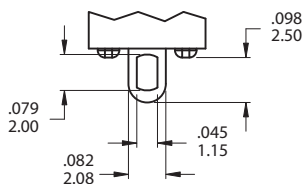


T12 use with BA1 bushing only
*T12 actuator mechanical life 200,000 cycles

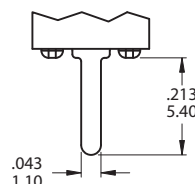
T6, T6-1 use with B6 bushing only

TERMINATION OPTIONS

M1 Solder lug



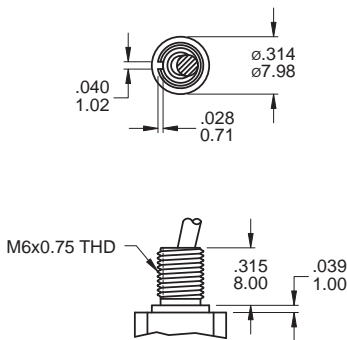
M2 PC Thru - hole



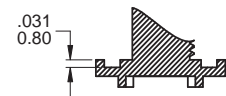
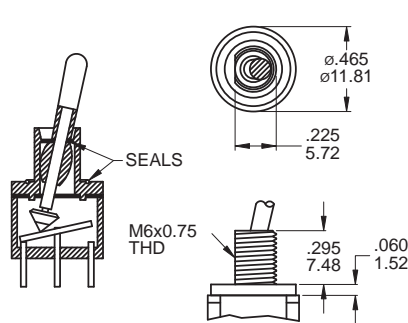
1F Toggle Switches

BUSHING OPTIONS

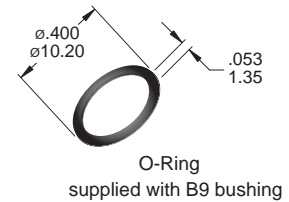
B6 HIGH TORQUE



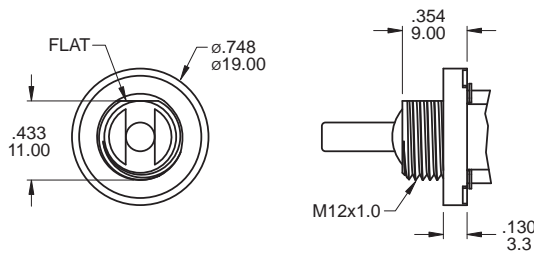
B9 SPLASH PROOF



CP-1TEB



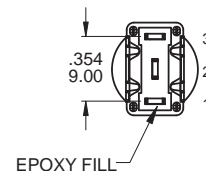
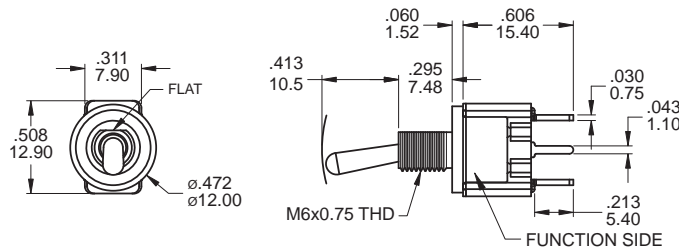
BA1 SPLASH PROOF



Use with T12 actuators only
BA1 Bear Strength from top of actuator
up to 10kg aside up to 15kg

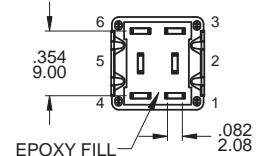
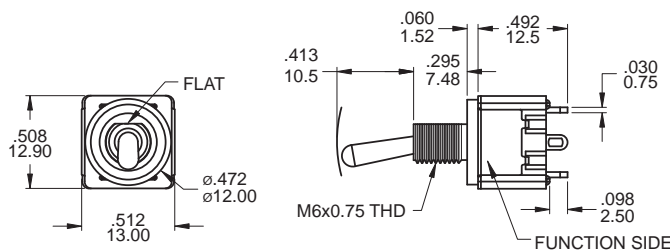
POLE OPTIONS

SPDT



Part No. Shown : 1FS1T1B9M2RES

DPDT



Part No. Shown : 1FD1T1B9M1QES

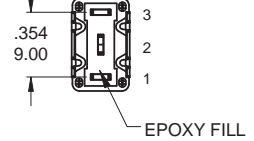
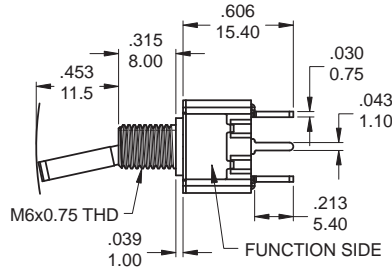
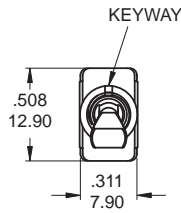


1F Series

Miniature Toggle Switches

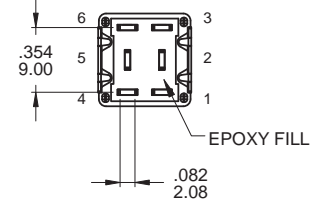
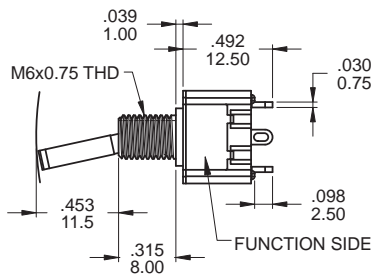
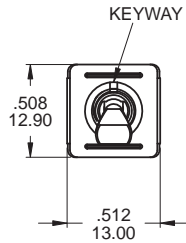
1F
Toggle Switches

SPDT



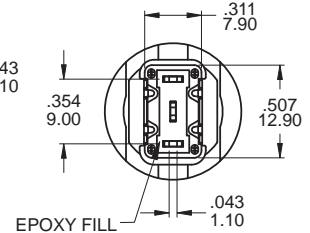
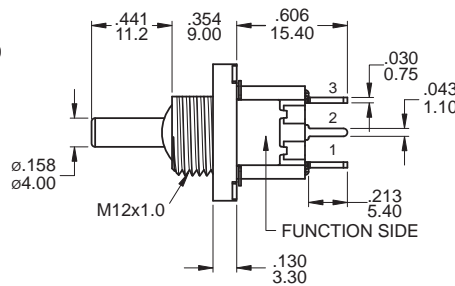
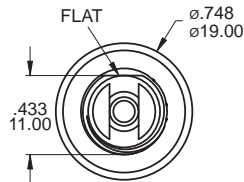
Part No. Shown : 1FS1T6B6M2QES

DPDT



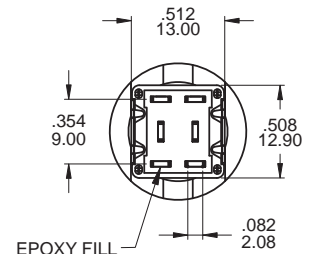
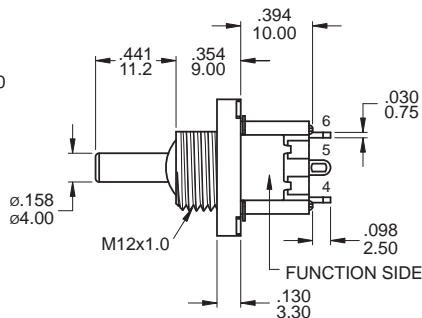
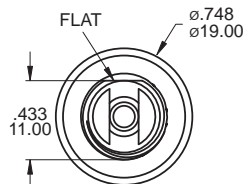
Part No. Shown : 1FD1T6B6M1QES

SPDT



Part No. Shown : 1FS1T12BA1M2QES

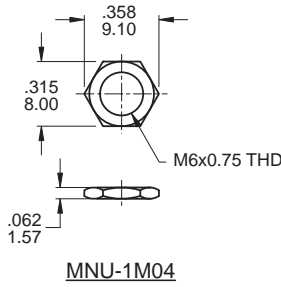
DPDT



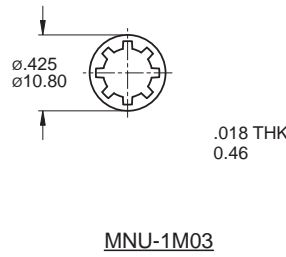
Part No. Shown : 1FD1T12BA1M1QES

HARDWARE

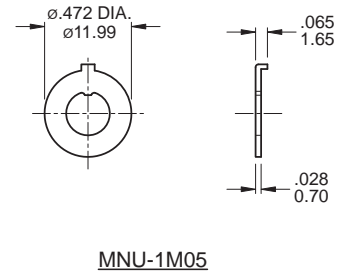
M6x0.75 NUT



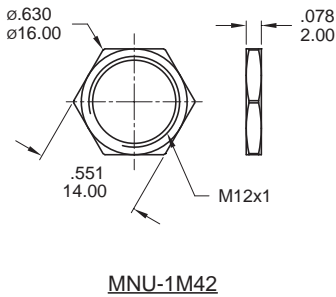
LOCKWASHER



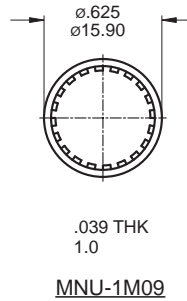
LOCKING RING



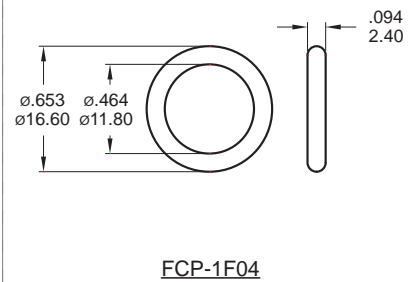
M12x1 NUT



LOCKWASHER



O-RING



Supplied standard with BA1 bushing

Supplied standard with BA1 bushing

Supplied standard with BA1 bushing

CONTACT MATERIAL OPTIONS

	CONTACT PLATING	TERMINAL PLATING	RATINGS
Q	Silver	Q = Silver	6 Amps with resistant load @ 125VAC 3 Amps with resistant load @ 250VAC or 30VDC
C	Gold over Silver	C = Gold over silver	
R	Gold	R = Gold	0.4 Volt - Amps (VA) max. @ 20V max. (AC or DC)

SOLDERING PROCESSES

MANUAL SOLDERING : Use soldering iron of 30 watts, controlled at 350°C approximately 5 seconds while applying solder.

WAVE SOLDERING: Recommended Soldering Temperature: 270 ± 5°C

Duration of Solder Immersion: Max 5 sec. (PCB is 1.6mm in thickness)



1F
Toggle Switches