

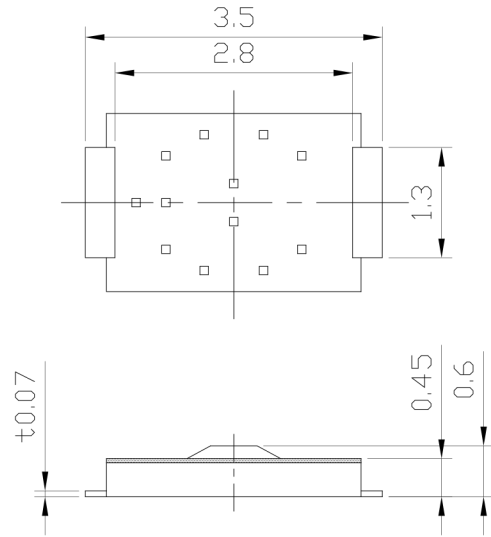


RoHS  
Compliant  
2002/95/EC

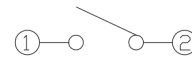


REV.	ECN. NO.	APPD.

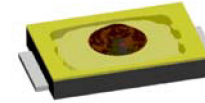
DIMENSIONS



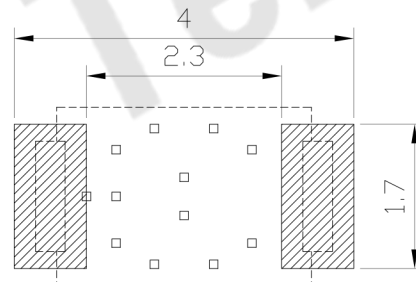
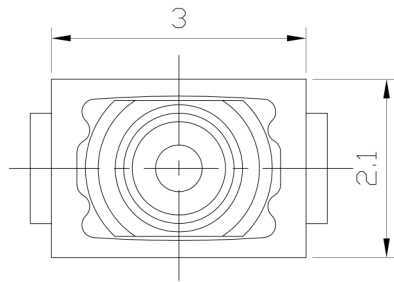
CIRCUIT DIAGRAM



PRODUCT IMAGE



P.C.B MOUNTING PATTERN DIMENSION  
The following soldering patterns are recommended for reflow soldering



ELECTRO-MECHANICAL CHARACTERISTICS  
Refer to additional specifications

Rating	DC 12V 50mA
Contact Resistance	500mΩ Max.
Travel	0.15 ± 0.1mm
Operating Force	200±50gf
Operating Life(cycles)	100,000

.X ±0.3	X. ±2'	UNITS mm
		MAT'L SEE NOTE
		FINISH SEE NOTE
		Q'TY
<small>THESE DRAWINGS AND SPECIFICATIONS ARE THE PROPERTY OF ACCURATE INNOTECH INC AND SHALL NOT BE REPRODUCED, COPIED OR USED IN ANY MANNER WITHOUT THE PRIOR WRITTEN CONSENT OF ACCURATE INNOTECH INC.</small>		

东莞市腾兴电子有限公司

TITLE: TACT SWITCH	PART NO.: AT-1123 SERIES
DR: Ricky 2017/04/06	DWG NO.: ASI-1123
CHKD: Ricky 2017/04/06	SCALE SHEET REV. CUSTOMER DRAWING
APPD:	1:1 1/1 A