

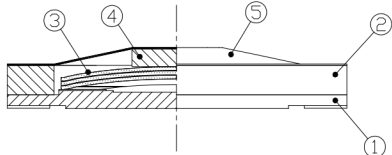
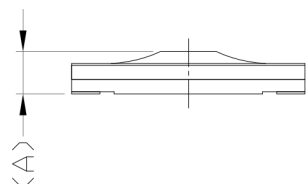
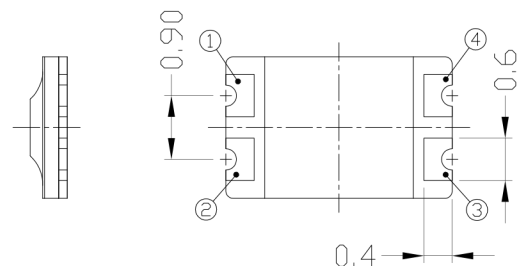
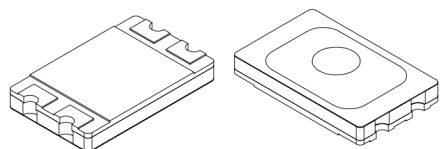
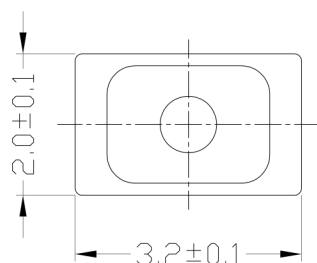


RoHS Compliant
2002/95/EC

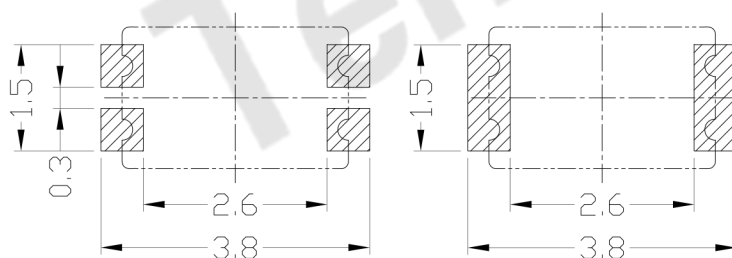


REV.	ECN. NO.	APPD.

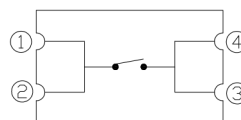
DIMENSIONS



RECOMMEND LAND PATTERN



CIRCUIT DIAGRAM



MODEL CODE

AT-3220-2-160G-Y

(A)	Height
2	0.60±0.1
3	0.65±0.1

See chart

	Cover film Color
B	Black
Y	Yellow

ELECTRO-MECHANICAL CHARACTERISTICS

Refer to additional specifications

Rating	DC 12V 50mA	
Contact Resistance	100mΩ Max.	
Travel	0.13±0.05mm	
Operating Force	160±30gf	180±30gf
	200±30gf	240±30gf
Operating Life(cycles)	500,000	

5	Cover film	Polyimide & Epoxy	1	
4	Actuator	Polyimide & Epoxy	1	
3	Metal dome	SUS301	1~3	Ag plating
2	Guide film	Polyimide & Epoxy	1	
1	PCB	Cu PSR	1	Au+Ni plating
NO.	PARTS	METERIAL	Q'TY	FINISHING

General Tolerance		UNITS	mm
Dimension	mm (°)	MAT'L	SEE NOTE
X	±0.2	FINISH	SEE NOTE
X.X	±0.1	Q'TY	
X.XX	±0.05		
X.XXX	±0.01		
ANGLE	±1°		

THESE DRAWINGS AND SPECIFICATIONS ARE THE PROPERTY OF ACCURATE INNOVTECH INC AND SHALL NOT BE REPRODUCED, COPIED OR USED IN ANY MANNER WITHOUT THE PRIOR WRITTEN CONSENT OF ACCURATE INNOVTECH INC.

东莞市腾兴电子有限公司			
TITLE: SMD DOME SWITCH		PART NO.: AT-3220 SERIES	
DR: Ricky 2019/04/09		DWG NO.: AKS-3220	
CHKD: Ricky 2019/04/09		SCALE	SHEET
APPD:		1:1	1/1
		REV.	CUSTOMER DRAWING
		A	