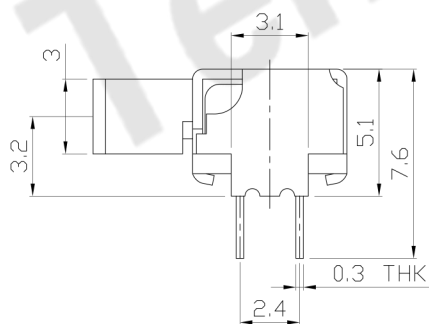
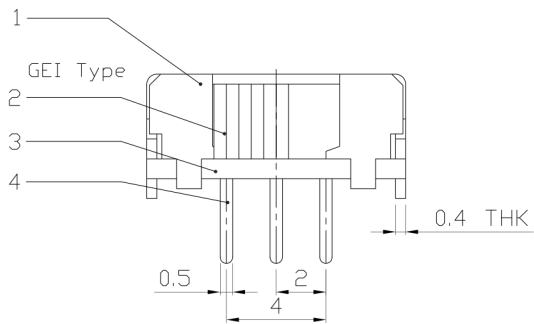
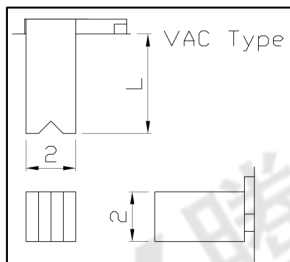
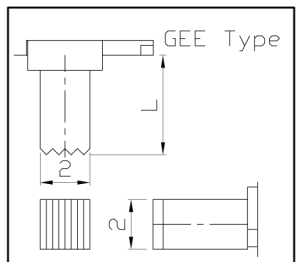
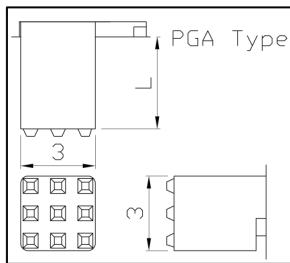
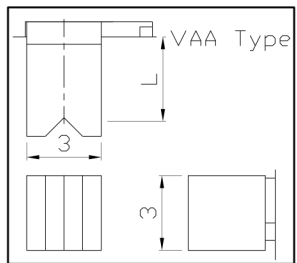
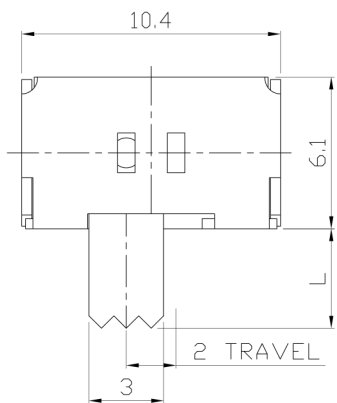




RoHS
Compliant
2002/95/EC

DIMENSIONS

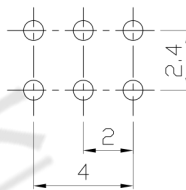


MODEL CODE

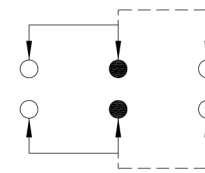
SK-22D32-GEI

Knob Type
GEI
VAA
PGA
GEE
VAC

L(mm)
~



P.C.B LAYOUT
BOTTOM VIEW



CIRCUIT DIAGRAM

ELECTRO-MECHANICAL CHARACTERISTICS

Refer to additional specifications

RATING	0.3A 30V DC
CIRCUIT	2P2T
CONTACT RESISTANCE	30mΩ MAX.
TIMING	NON-SHORTING
TRAVEL	2mm
OPERATING FORCE	200±100gf
OPERATING LIFE(cycles)	10,000

NO.	PARTS	MATERIAL	Q'TY	FINISHING
8				
7				
6	CONTACT CLIP	PBS C5210R-EH	2	Ag CLAD
5	SPRING PLATE	SUS	1	NATURAL
4	TERMINAL	BRASS STRIP	6	Ag PLATED OVER Ni PLATED
3	BASE	PHENOLIC RESIN	1	NATURAL
2	KNOB	POM	1	BLACK
1	FRAME	STEEL STRIP	1	Ni PLATED
NO.	PARTS	MATERIAL	Q'TY	FINISHING

THESE DRAWINGS AND SPECIFICATIONS ARE THE PROPERTY OF ACCURATE INNOVATION AND SHALL NOT BE REPRODUCED, COPIED OR USED IN ANY MANNER WITHOUT THE PRIOR WRITTEN CONSENT OF ACCURATE INNOVATION INC.

WITHIN 1.5mm: ±0.1mm
OVER 1.5mm: ±0.2mm
UNITS mm
MAT'L
SEE NOTE
FINISH
SEE NOTE
Q'TY

东莞市腾兴电子有限公司

TITLE:	SLIDE SWITCH / HORIZONTAL	PART NO.:	SK-22D32		
DR:	Ricky 2015/12/11	DWG NO.:	ADJ-22D32		
CHKD:	Ricky 2015/12/11	SCALE	SHEET	REV.	CUSTOMER DRAWING
APPD:		4:1	1/1	A	