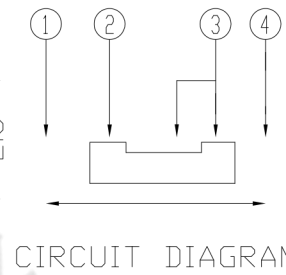
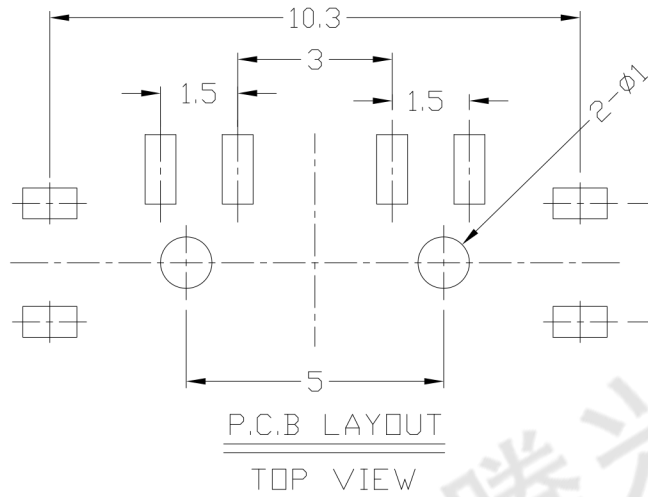
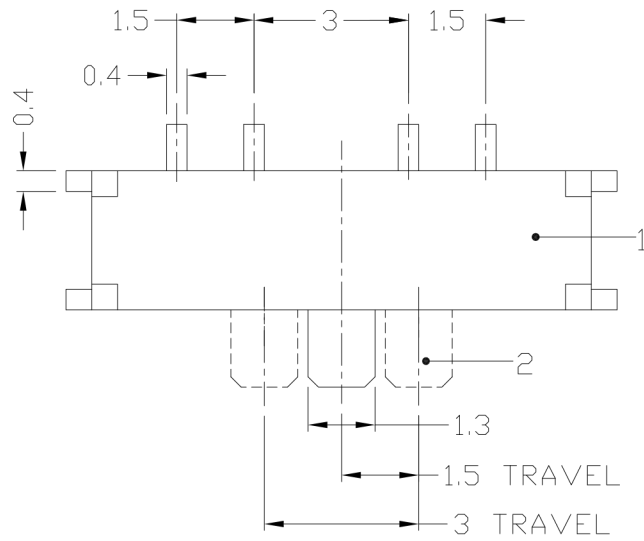




RoHS Compliant
2002/95/EC

REV.	ECN.	NO.	APPD.

DIMENSIONS

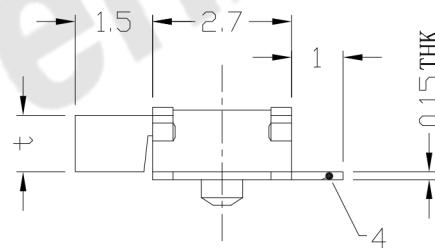
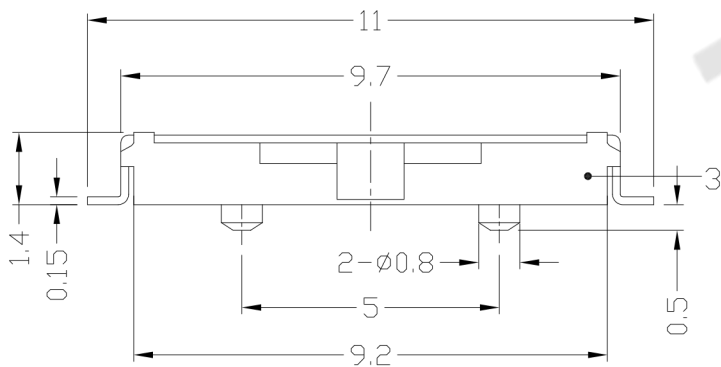


MODEL CODE

AS-1300 **A**P-**B**

t	(mm)
A	1.1
B	0.4

Knob Color	
B	Black
W	White
BL	Blue



ELECTRO-MECHANICAL CHARACTERISTICS

Refer to additional specifications

RATING	DC6V 0.3A
CIRCUIT	1P2T
TIMING	NON-SHORTING
CONTACT RESISTANCE	100mΩ MAX.
TRAVEL	1.5mm
OPERATING FORCE	200±100gf
OPERATING LIFE(cycles)	10,000

NO.	PARTS	MATERIAL	Q'TY	FINISHING
8				
7				
6	SPRING PLATE	SUS	1	WASHING
5	CONTACT	PBS STRIP	1	Ag CLOD
4	TERMINAL	BRASS STRIP	1	Ag PLATED
3	COVER	SUS/PBS	1	Ag PLATED
2	CASE	LCP	1	BLACK
1	KNOB	PA46	1	BLACK
NO.	PARTS	MATERIAL	Q'TY	FINISHING

WITHIN 1.5mm:±0.1mm	UNITS mm
OVER 1.5mm:±0.2mm	MAT'L
	SEE NOTE
	FINISH
	SEE NOTE
	Q'TY

THESE DRAWINGS AND SPECIFICATIONS ARE THE PROPERTY OF ACCURATE INNOVATECH INC AND SHALL NOT BE REPRODUCED, COPIED OR USED IN ANY MANNER WITHOUT THE PRIOR WRITTEN CONSENT OF ACCURATE INNOVATECH INC.

东莞市腾兴电子有限公司

TITLE:	MINI SLIDE SWITCH / HORIZONTAL	PART NO.:	AS-1300AP SERIES
DR:	Ricky 2016/12/22	DWG NO.:	AZJ-1300AP
CHKD:	Ricky 2016/12/22	SCALE	SHEET
APPD:		1:1	1/1
		REV. A	CUSTOMER DRAWING