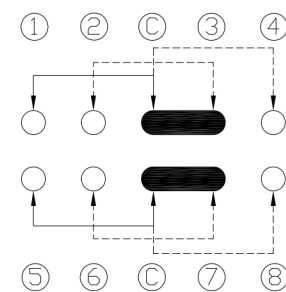
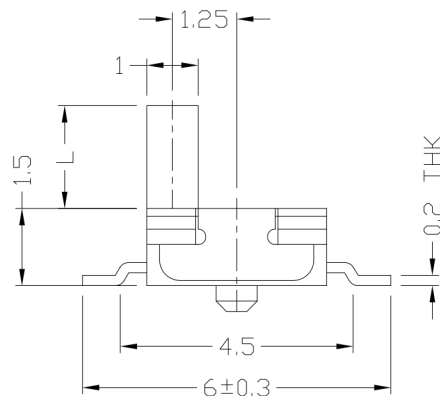
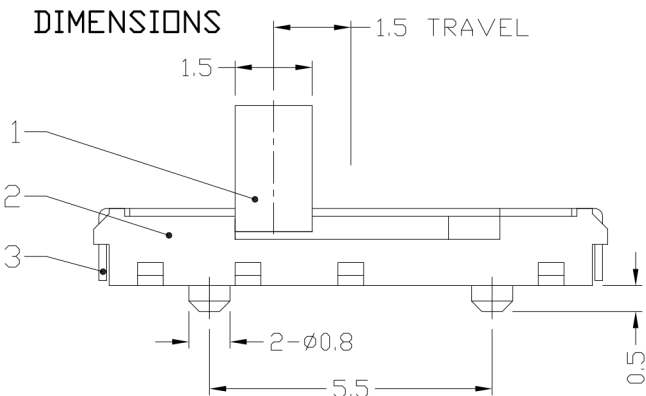




RoHS Compliant
2002/95/EC

REV.	ECN.	NO.	APPD.

DIMENSIONS

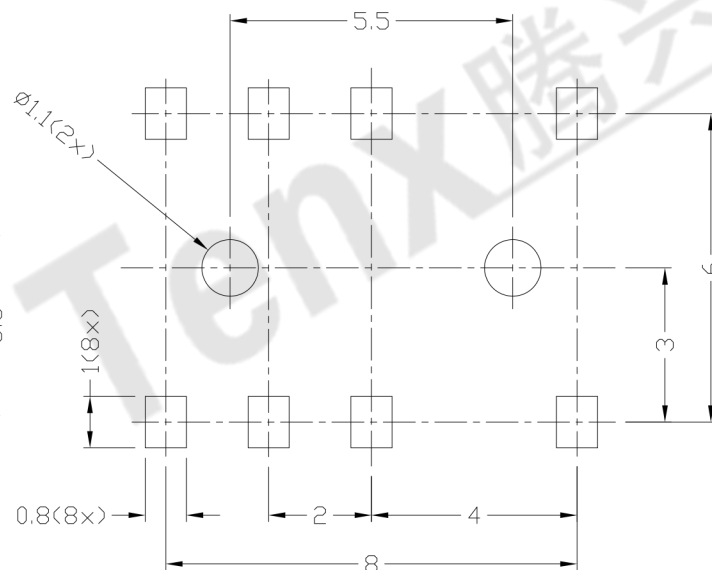
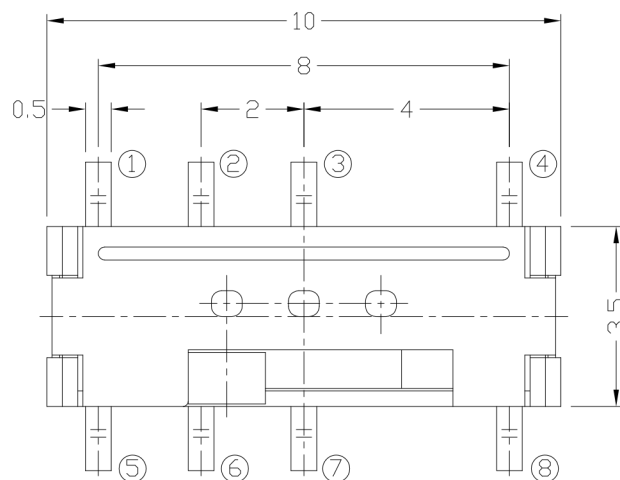


CIRCUIT DIAGRAM

MODEL CODE

AS-1400

L (mm)	(mm)
A	1.0
B	2.0
C	1.5



P.C.B LAYOUT

TOP VIEW

ELECTRO-MECHANICAL CHARACTERISTICS

Refer to additional specifications

RATING	DC6V 0.3A
CIRCUIT	2C3P
CONTACT RESISTANCE	70mΩ MAX.
TRAVEL	1.5mm
OPERATING FORCE	200±60gf
OPERATING LIFE(cycles)	10,000

NO.	PARTS	MATERIAL	Q'TY	FINISHING
8				
7				
6				
5	SPRING PLATE	SUS	1	NATURAL
4	CONTACT	PBS C5210R-EH	2	Ag CLAD
3	COVER	SUS	1	NATURAL
2	CASE	PA46/BRASS STRIP	1	BLACK/Ag PLATED OVER Ni PLATED
1	KNOB	PA46	1	BLACK

WITHIN 1.5mm:±0.1mm
OVER 1.5mm:±0.2mm
UNITS mm
MAT'L SEE NOTE
FINISH SEE NOTE
Q'TY

东莞市腾兴电子有限公司			
TITLE: MINI SLIDE SWITCH / VERTICAL	PART NO.:	AS-1400 SERIES	
DR: Ricky 2015/04/14	DWG NO.:	ADL-1400	
CHKD: Ricky 2015/04/14	SCALE	SHEET	REV.
APPD:	6:1	1/1	A
			CUSTOMER DRAWING

THESE DRAWINGS AND SPECIFICATIONS ARE THE PROPERTY OF ACCURATE INNOVATION INC AND SHALL NOT BE REPRODUCED, COPIED OR USED IN ANY MANNER WITHOUT THE PRIOR WRITTEN CONSENT OF ACCURATE INNOVATION INC.