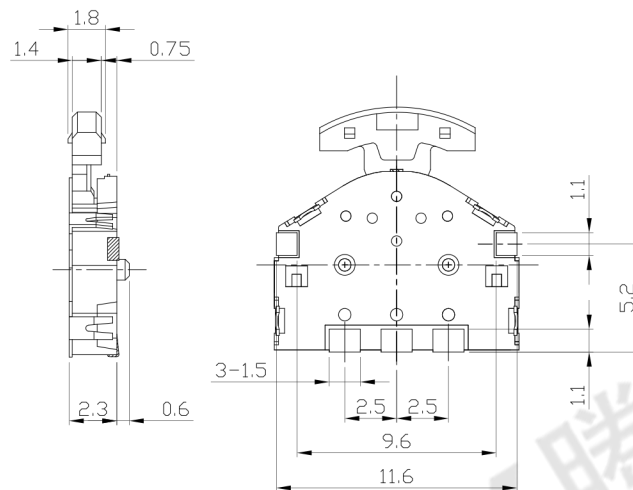
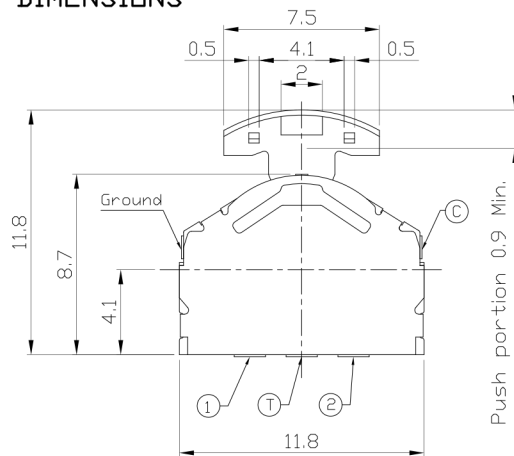




**RoHS Compliant**  
2002/95/EC

REV.	ECN. NO.	APPD.

### DIMENSIONS



### CODE TABLE

CODE TABLE <img alt="hatched pattern" style="vertical-align: middle;"/> =DN

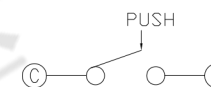
Angle	0°			
Terminal	(25)	(18)	(18)	(25)
①				
②				
③				

CCW ← → CW

### PRODUCT IMAGE

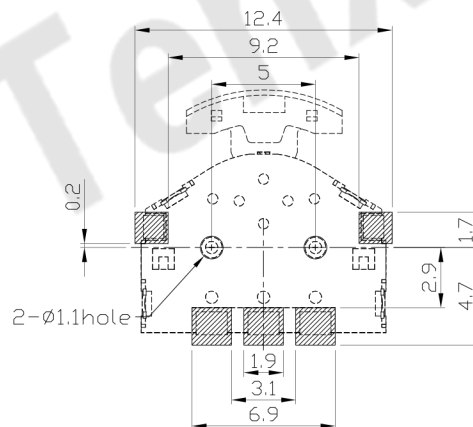
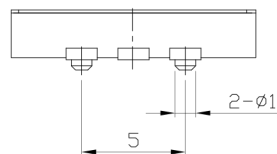


### CIRCUIT DIAGRAM



### P.C.B MOUNTING PATTERN DIMENSION

The following soldering patterns are recommended for reflow soldering



### ELECTRO-MECHANICAL CHARACTERISTICS

Refer to additional specifications

Rating	DC 5V 10mA	
Output Voltage	1V Min. at 5V 1mA	
Operating Force	Lever	70±50gf
	Center	200±100gf
Travel	Center	0.9mm Min.
Operating Life(cycles)	100,000	

X ±0.2

X. ±2'

UNITS mm

MAT'L

SEE NOTE

FINISH

SEE NOTE

Q'TY



THESE DRAWINGS AND SPECIFICATIONS ARE THE PROPERTY OF ACCURATE INNOVATECH INC AND SHALL NOT BE REPRODUCED, COPIED OR USED IN ANY MANNER WITHOUT THE PRIOR WRITTEN CONSENT OF ACCURATE INNOVATECH INC.

**东莞市腾兴电子有限公司**

TITLE:  
**PUSH LEVER SWITCH**

DR: *Ricky* 2014/04/02

CHKD: *Ricky* 2014/04/02

APPD:

PART NO.:  
AL-1305A SERIES

DWG NO.:  
ASI-1305A

SCALE	SHEET	REV.	CUSTOMER DRAWING
1:1	1/1	A	