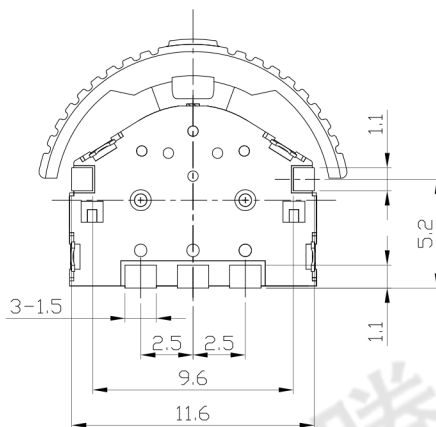
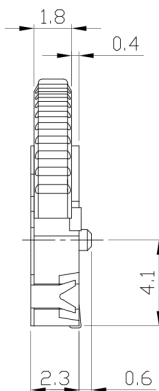
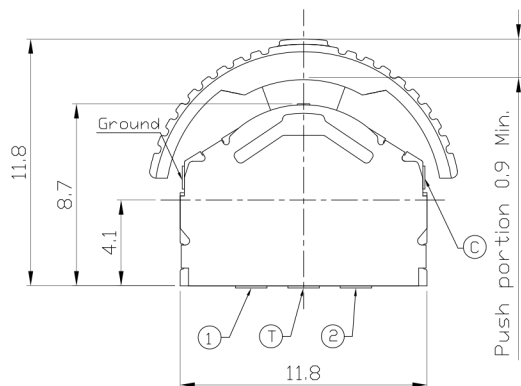




RoHS Compliant
2002/95/EC

REV.	ECN.	NO.	APPD.

DIMENSIONS



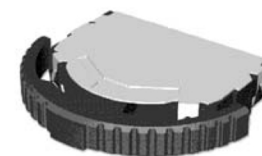
CODE TABLE

CODE TABLE (=DN)

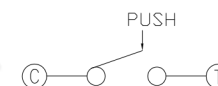
Angle	0°			
Terminal	(25)	(18)	(18)	(25)
①				
②				
③				

CCW ← → CW

PRODUCT IMAGE

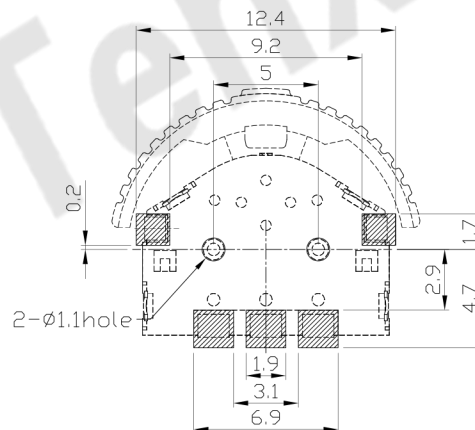
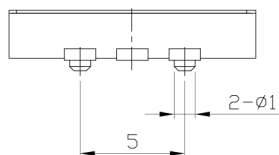


CIRCUIT DIAGRAM



P.C.B MOUNTING PATTERN DIMENSION

The following soldering patterns are recommended for reflow soldering



ELECTRO-MECHANICAL CHARACTERISTICS

Refer to additional specifications

Rating	DC 5V 10mA	
Output Voltage	1V Min. at 5V 1mA	
Operating Force	Lever	70±50gf
	Center	200±100gf
Travel	Center	0.9mm Min.
Operating Life(cycles)	100,000	

.X ±0.2	X. ±2'	UNITS mm
		MAT'L
		SEE NOTE
		FINISH
		SEE NOTE
		Q'TY

THESE DRAWINGS AND SPECIFICATIONS ARE THE PROPERTY OF ACCURATE INNOVATECH INC AND SHALL NOT BE REPRODUCED, COPIED OR USED IN ANY MANNER WITHOUT THE PRIOR WRITTEN CONSENT OF ACCURATE INNOVATECH INC.

东莞市腾兴电子有限公司

TITLE: PUSH LEVER SWITCH	PART NO.: AL-1305 SERIES
DR: <i>Ricky</i> 2014/04/02	DWG NO.: ASI-1305
CHKD: <i>Ricky</i> 2014/04/02	SCALE SHEET REV. CUSTOMER DRAWING
APPD:	1:1 1/1 A