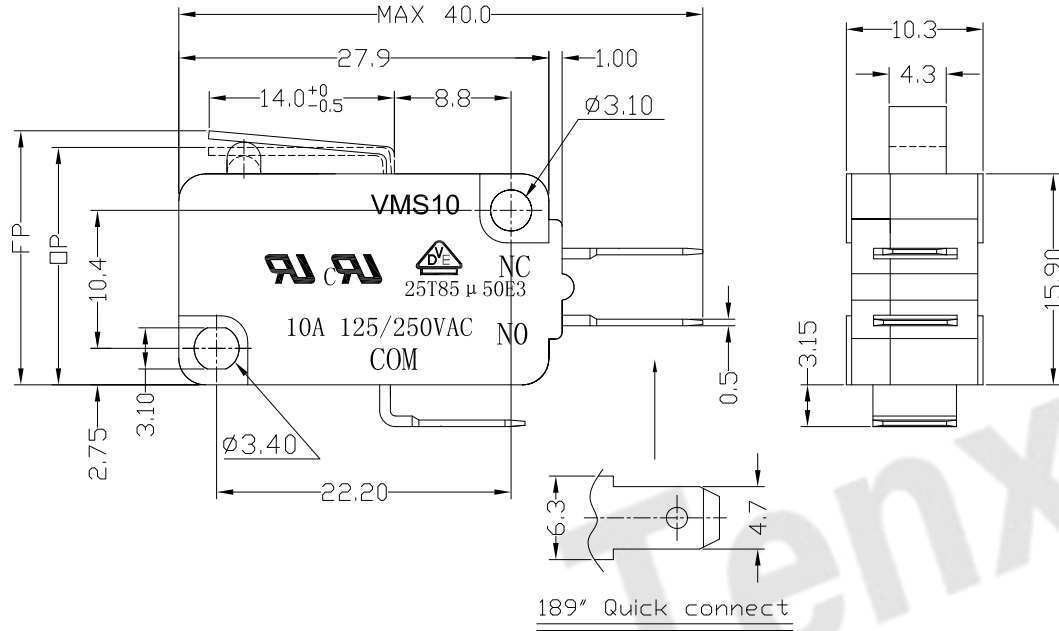




RoHS
Compliant
2002/95/EC

REV.	ECN.	NO.	APPD.

DIMENSIONS



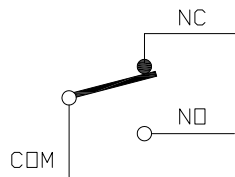
MODEL CODE

VMS 10-01 X-XX-V10

1 2 3 4 5 6

- Series : VMS
- Current Rating : 10=10A 125/250VAC
- Actuator : 00=Non-lever 01-99=Lever
- Termination : see chart (N/K/J/L/W/A)
(7=SPST-NO / 16=SPST-NC)
- Operating Force : see chart
- Contact type: V10=10Amps Contact

CIRCUIT DIAGRAM



1.Functional spec

1.1 Rated Voltage(AC)	125/250VAC	
1.2 Rated Current(AC)	10A	
1.3 Contact Resistance	≤100mΩ(Initial value)	
1.4 Operating Force	160±40gf	250±50gf
1.5 Bounce Time		
1.6 Free Position	19.1±0.5mm	
1.7 Operating Position	18.1±0.5mm	
1.8 Position Travel		
1.9 Return Force		

2.Reliable Rating

2.1 Mechanical Life	1,000,000 CYCLES
2.2 Electrical Life	10,000 CYCLES
2.3 Insulation Resistance	≥100MΩ DC500V
2.4 Withstand Voltage	AC1500V 1 minute
2.5 Soldering Technic	Hand Soldering
2.6 Operating Temper	-25°C ~ +85°C
2.7 Ambient Humidity Used	<85%RH

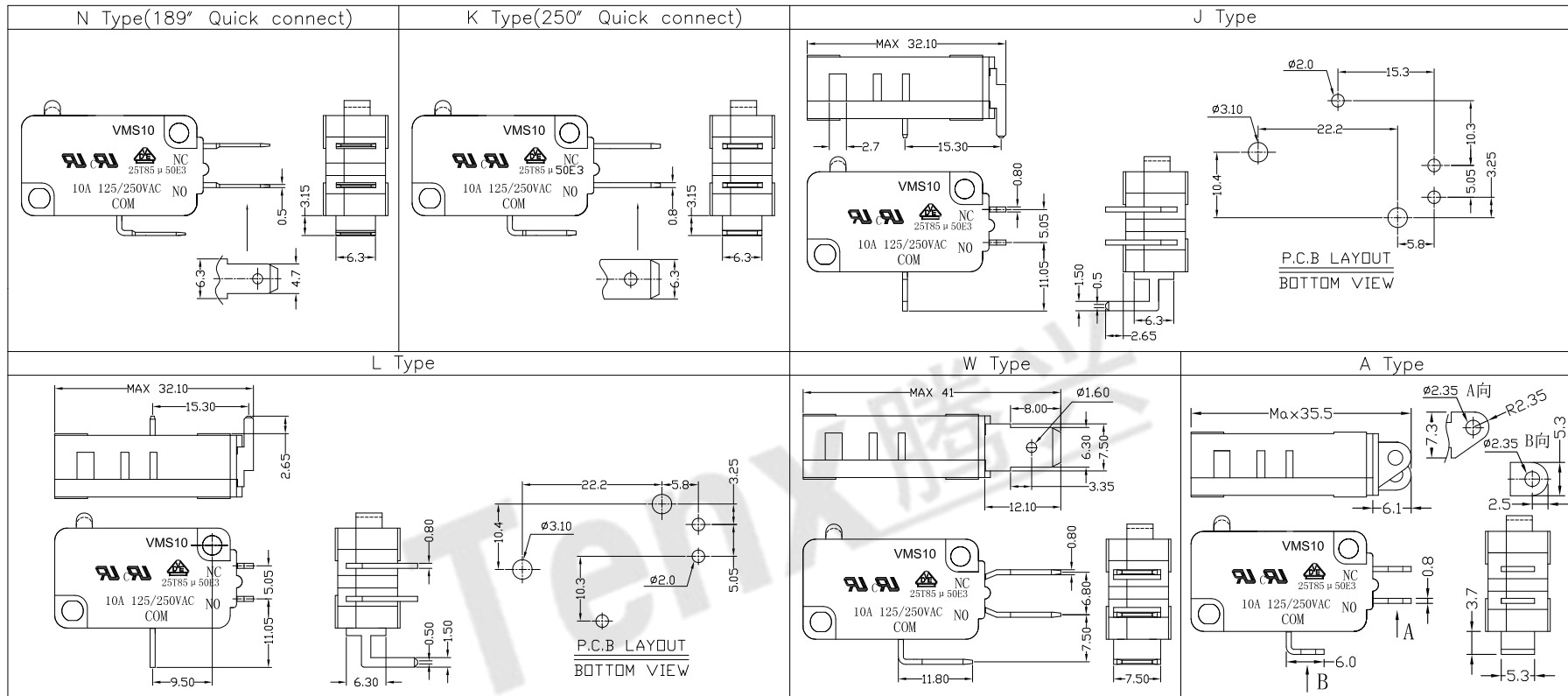
Tolerance:±0.2	UNITS mm	东莞市腾兴电子有限公司				
	MAT'L					
	SEE NOTE	TITLE:	PART NO.:			
	FINISH	MICRO SWITCH VMS10 SERIES	VMS10-01N-XX-V10			
	SEE NOTE	DR: Ricky 2017/6/6	DWG NO.:			
	Q'TY	CHKD: Ricky 2017/6/6	ATD-01X-XX-V10			
THESE DRAWINGS AND SPECIFICATIONS ARE THE PROPERTY OF ACCURATE INNOTECH INC AND SHALL NOT BE REPRODUCED, COPIED OR USED IN ANY MANNER WITHOUT THE PRIOR WRITTEN CONSENT OF ACCURATE INNOTECH INC.		APPD:	SCALE	SHEET	REV.	CUSTOMER DRAWING
			1:1	1/2	A	



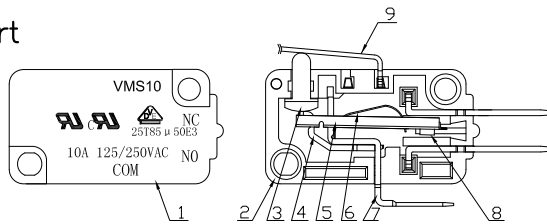
RoHS Compliant
2002/95/EC

REV.	ECN.	NO.	APPD.

Terminal Type



Structure chart



Material list

NO.	PARTS	MATERIAL	Q'TY	FINISHING	Tolerance: ±0.2	UNITS mm	东莞市腾兴电子有限公司			
9	Lever	SUS301	1				SEE NOTE	TITLE:	PART NO.:	
8	Contact	Silver alloy	3					MICRO SWITCH VM10 SERIES	VMS10-01X-XX-V10	
7	Terminal	C2680	3	Silver Plating			FINISH	DR: <i>Ricky</i> 2017/6/6	DWG NO.:	
6	Spring Plate	C5210	1				SEE NOTE	CHKD: <i>Ricky</i> 2017/6/6	ATD-01X-XX-V10	
5	Change Plate	C2680	1				Q'TY	APPD:	SCALE	
4	Fixed Rod	C2680	1						SHEET	
3	Button	PBT	1	Gray					REV.	
2	Lower Housing	PBT	1	Black					CUSTOMER	
1	Upper Housing	PBT	1	Black					DRAWING	

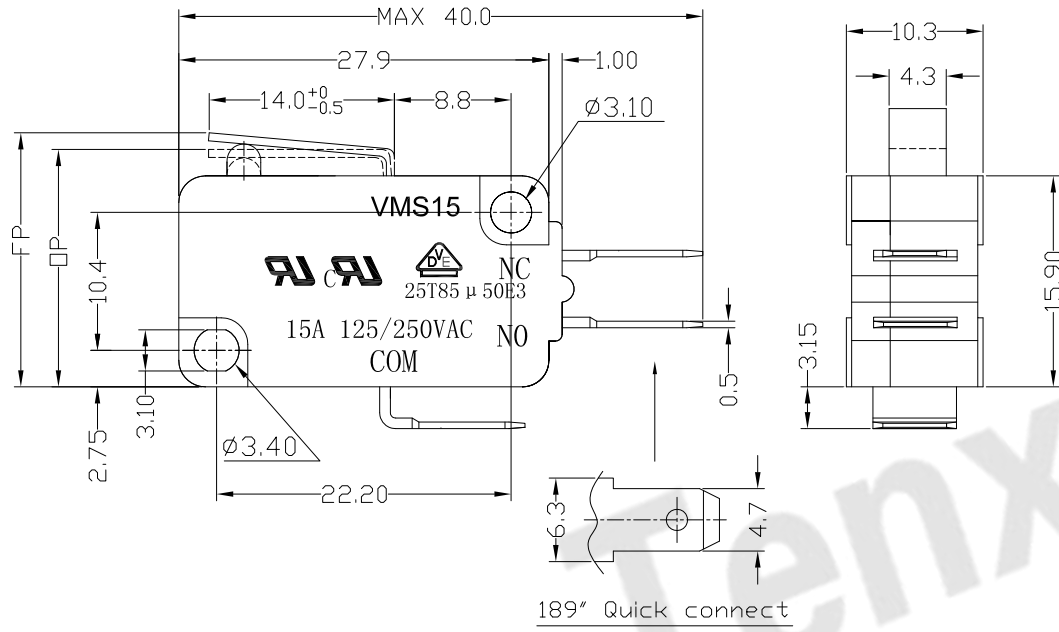
THESE DRAWINGS AND SPECIFICATIONS ARE THE PROPERTY OF ACCURATE INNOTECH INC AND SHALL NOT BE REPRODUCED, COPIED OR USED IN ANY MANNER WITHOUT THE PRIOR WRITTEN CONSENT OF ACCURATE INNOTECH INC.



RoHS
Compliant
2002/95/EC

REV.	ECN.	NO.	APPD.

DIMENSIONS



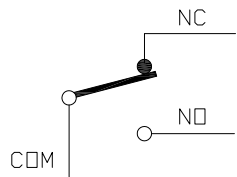
MODEL CODE

VMS 15-01 X-XX-V15

1 2 3 4 5 6

- Series : VMS
- Current Rating : 15=15A 125/250VAC
- Actuator : 00=Non-lever 01-99=Lever
- Termination : see chart (N/K/J/L/W/A)
(7=SPST-NO / 16=SPST-NC)
- Operating Force : see chart
- Contact type: V15=15Amps Contact

CIRCUIT DIAGRAM



1.Functional spec

1.1 Rated Voltage(AC)	125/250VAC
1.2 Rated Current(AC)	15A
1.3 Contact Resistance	≤100mΩ(Initial value)
1.4 Operating Force	160±40gf 250±50gf
1.5 Bounce Time	
1.6 Free Position	19.1±0.5mm
1.7 Operating Position	18.1±0.5mm
1.8 Position Travel	
1.9 Return Force	

2.Reliable Rating

2.1 Mechanical Life	1,000,000 CYCLES
2.2 Electrical Life	10,000 CYCLES
2.3 Insulation Resistance	≥100MΩ DC500V
2.4 Withstand Voltage	AC1500V 1 minute
2.5 Soldering Technic	Hand Soldering
2.6 Operating Temper	-25°C ~ +85°C
2.7 Ambient Humidity Used	<85%RH

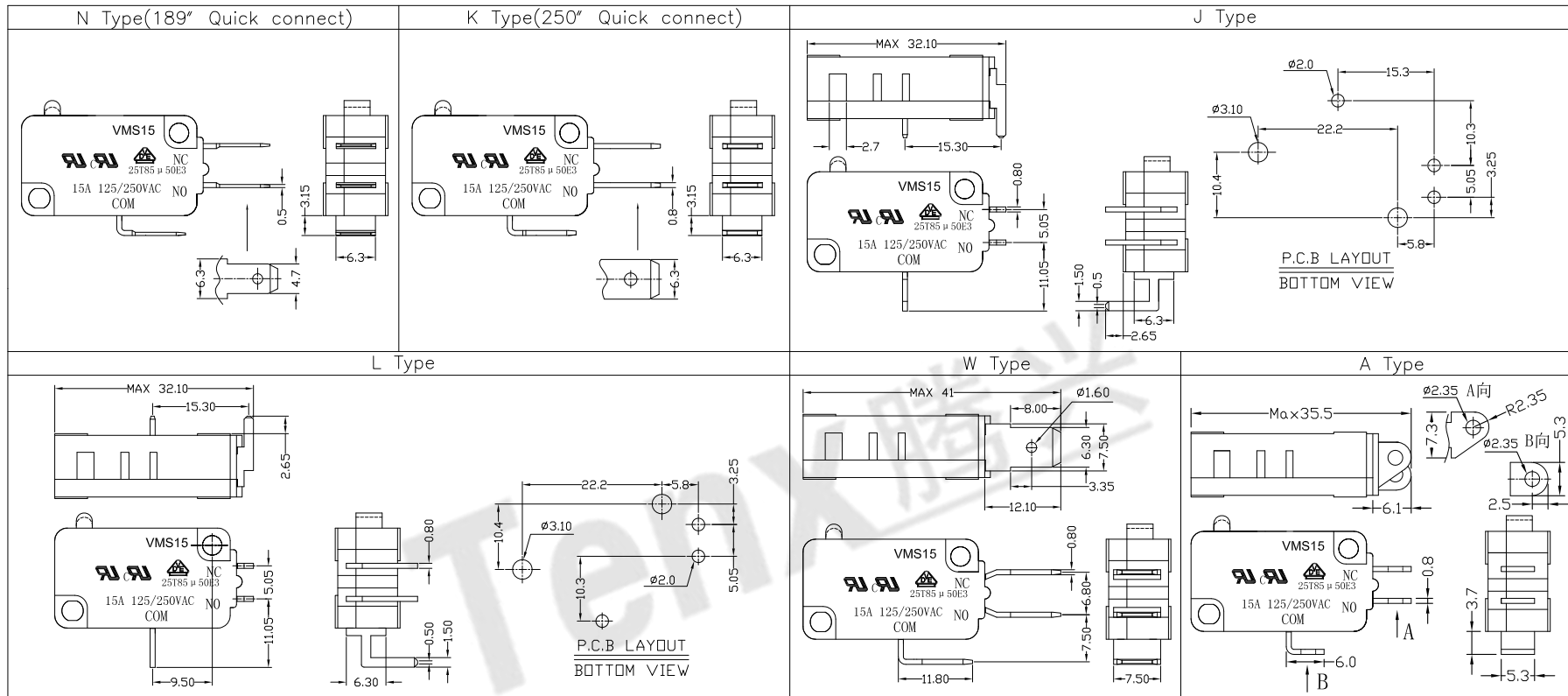
Tolerance:±0.2		UNITS	东莞市腾兴电子有限公司			
		mm				
		MAT'L	SEE NOTE		TITLE: MICRO SWITCH VMS15 SERIES	
		FINISH	SEE NOTE		PART NO: VMS15-01N-XX-V15	
		Q'TY	DR: Ricky 2017/6/8		DWG NO: ATD-01X-XX-V15	
<small>THESE DRAWINGS AND SPECIFICATIONS ARE THE PROPERTY OF ACCURATE INNOTECH INC AND SHALL NOT BE REPRODUCED, COPIED OR USED IN ANY MANNER WITHOUT THE PRIOR WRITTEN CONSENT OF ACCURATE INNOTECH INC.</small>			CHKD: Ricky 2017/6/8		SCALE	
			APPD:		1:1	SHEET 1/2



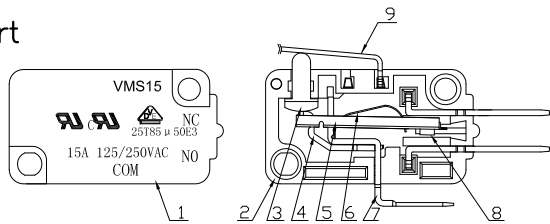
RoHS
Compliant
2002/95/EC

REV.	ECN.	NO.	APPD.

Terminal Type



Structure chart



Material list

NO.	PARTS	MATERIAL	Q'TY	FINISHING
9	Lever	SUS301	1	
8	Contact	Silver alloy	3	
7	Terminal	C2680	3	Silver Plating
6	Spring Plate	C5210	1	
5	Change Plate	C2680	1	
4	Fixed Rod	C2680	1	
3	Button	PBT	1	Gray
2	Lower Housing	PBT	1	Black
1	Upper Housing	PBT	1	Black

Tolerance: ± 0.2

UNITS mm

MAT'L

SEE NOTE

FINISH

SEE NOTE

Q'TY

THESE DRAWINGS AND SPECIFICATIONS ARE THE PROPERTY OF ACCURATE INNOTECH INC AND SHALL NOT BE REPRODUCED, COPIED OR USED IN ANY MANNER WITHOUT THE PRIOR WRITTEN CONSENT OF ACCURATE INNOTECH INC.

东莞市腾兴电子有限公司			
TITLE:	MICRO SWITCH VM15 SERIES	PART NO.:	VMS15-01X-XX-V15
DR:	Ricky 2017/6/8	DWG NO.:	ATD-01X-XX-V15
CHKD:	Ricky 2017/6/8	SCALE	1:1
APPD:		SHEET	2/2
		REV.	A
		CUSTOMER DRAWING	