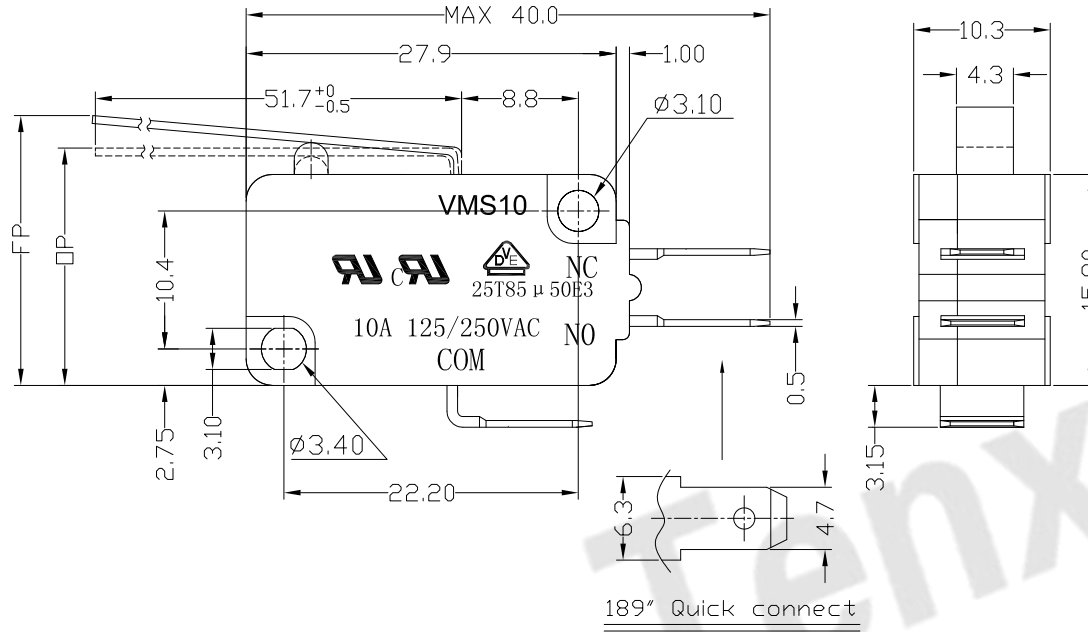




RoHS  
Compliant  
2002/95/EC

REV.	ECN.	NO.	APPD.

## DIMENSIONS



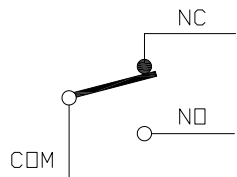
## MODEL CODE

VMS 10-03 X-XX-V10

1 2 3 4 5 6

- Series : VMS
- Current Rating : 10=10A 125/250VAC
- Actuator : 00=Non-lever 01-99=Lever
- Termination : see chart (N/K/J/L/W/A)  
(7=SPST-NO / 16=SPST-NC)
- Operating Force : see chart
- Contact type: V10=10Amps Contact

## CIRCUIT DIAGRAM



## 1.Functional spec

1.1 Rated Voltage(AC)	125/250VAC	
1.2 Rated Current(AC)	10A	
1.3 Contact Resistance	≤100mΩ(Initial value)	
1.4 Operating Force	35±15gf	60±25gf
1.5 Bounce Time		
1.6 Free Position	22.6±2.0mm	
1.7 Operating Position	18.1±2.0mm	
1.8 Position Travel		
1.9 Return Force		

## 2.Reliable Rating

2.1 Mechanical Life	1,000,000 CYCLES
2.2 Electrical Life	10,000 CYCLES
2.3 Insulation Resistance	≥100MΩ DC500V
2.4 Withstand Voltage	AC1500V 1 minute
2.5 Soldering Technic	Hand Soldering
2.6 Operating Temper	-25°C ~ +85°C
2.7 Ambient Humidity Used	<85%RH

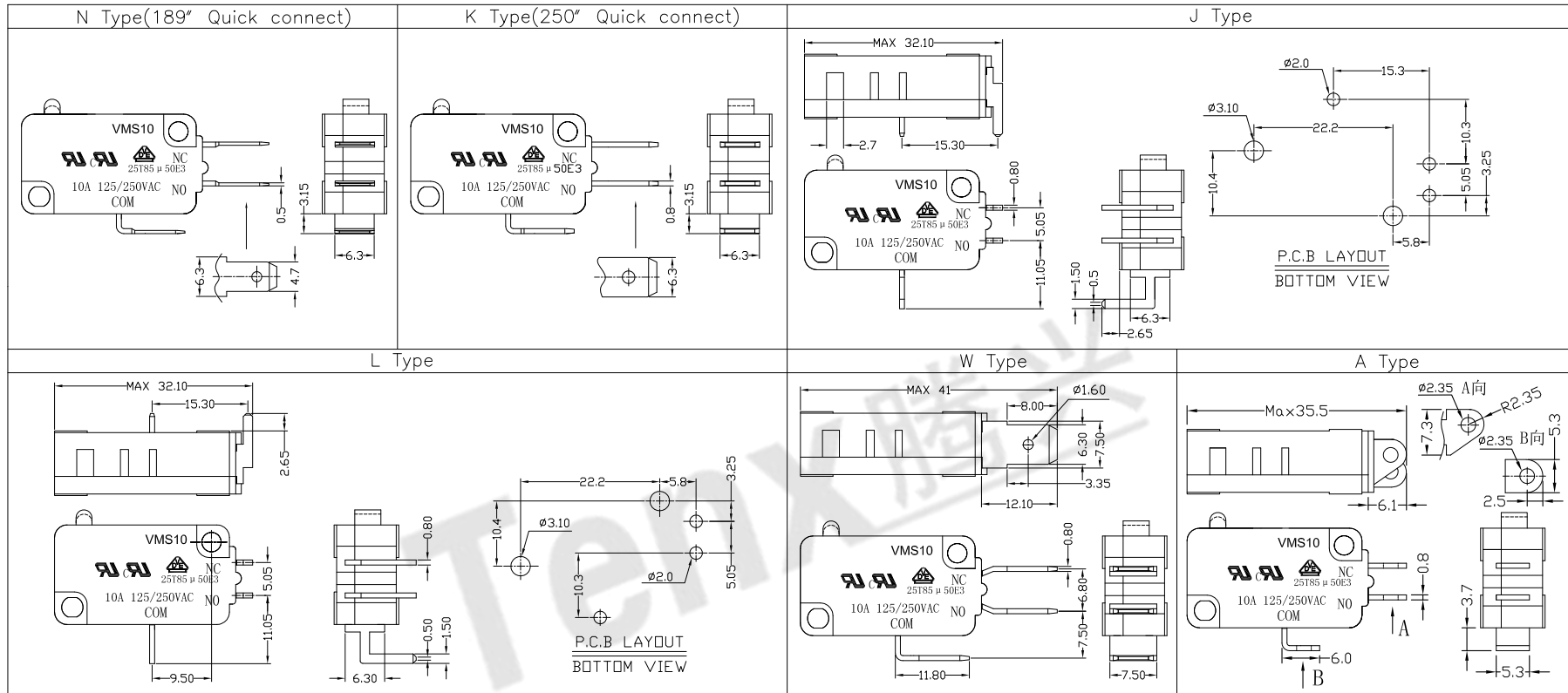
Tolerance:±0.2		UNITS	东莞市腾兴电子有限公司			
		mm				
		MAT'L	SEE NOTE		TITLE: MICRO SWITCH VMS10 SERIES	
		FINISH	SEE NOTE		PART NO: VMS10-03N-XX-V10	
		Q'TY	DR: Ricky 2017/6/7		DWG NO: ATD-03X-XX-V10	
<small>THESE DRAWINGS AND SPECIFICATIONS ARE THE PROPERTY OF ACCURATE INNOTECH INC AND SHALL NOT BE REPRODUCED, COPIED OR USED IN ANY MANNER WITHOUT THE PRIOR WRITTEN CONSENT OF ACCURATE INNOTECH INC.</small>			CHKD: Ricky 2017/6/7		SCALE	
			APPD:		1:1	SHEET
					11	1/2
					A	



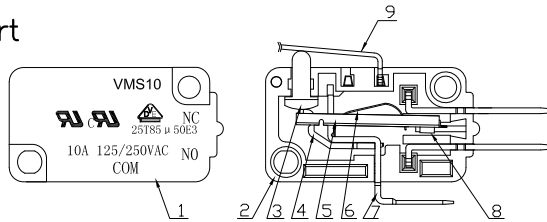
RoHS Compliant  
2002/95/EC

REV.	ECN.	NO.	APPD.

### Terminal Type



### Structure chart



### Material list

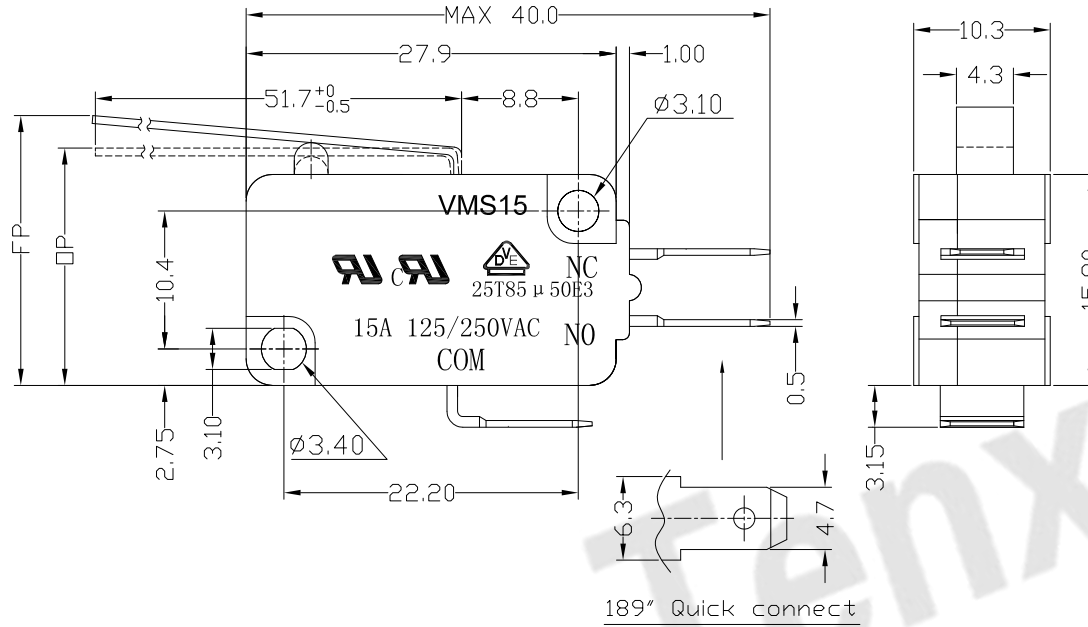
NO.	PARTS	MATERIAL	Q'TY	FINISHING	Tolerance: ±0.2	UNITS	东莞市腾兴电子有限公司					
9	Lever	SUS301	1		mm	SEE NOTE	TITLE: MICRO SWITCH VM10 SERIES		PART NO.: VMS10-03X-XX-V10			
8	Contact	Silver alloy	3				SEE NOTE	DR: Ricky 2017/6/7		DWG NO.: ATD-03X-XX-V10		
7	Terminal	C2680	3	Silver Plating	SEE NOTE	Q'TY		CHKD: Ricky 2017/6/7		SCALE	SHEET	REV.
6	Spring Plate	C5210	1				APPD:		11			
5	Change Plate	C2680	1		THESE DRAWINGS AND SPECIFICATIONS ARE THE PROPERTY OF ACCURATE INNOTECH INC AND SHALL NOT BE REPRODUCED, COPIED OR USED IN ANY MANNER WITHOUT THE PRIOR WRITTEN CONSENT OF ACCURATE INNOTECH INC.							
4	Fixed Rod	C2680	1									
3	Button	PBT	1	Gray								
2	Lower Housing	PBT	1	Black								
1	Upper Housing	PBT	1	Black								



RoHS  
Compliant  
2002/95/EC

REV.	ECN.	NO.	APPD.

### DIMENSIONS



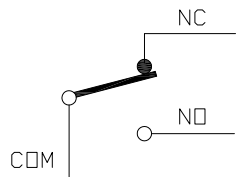
### MODEL CODE

VMS 15-03 X-XX-V15

1 2 3 4 5 6

- Series : VMS
- Current Rating : 15=15A 125/250VAC
- Actuator : 00=Non-lever 01-99=Lever
- Termination : see chart (N/K/J/L/W/A)  
(7=SPST-NO / 16=SPST-NC)
- Operating Force : see chart
- Contact type: V15=15Amps Contact

### CIRCUIT DIAGRAM



### 1.Functional spec

1.1 Rated Voltage(AC)	125/250VAC	
1.2 Rated Current(AC)	15A	
1.3 Contact Resistance	≤100mΩ(Initial value)	
1.4 Operating Force	35±15gf	60±25gf
1.5 Bounce Time		
1.6 Free Position	22.6±2.0mm	
1.7 Operating Position	18.1±2.0mm	
1.8 Position Travel		
1.9 Return Force		

### 2.Reliable Rating

2.1 Mechanical Life	1,000,000 CYCLES	
2.2 Electrical Life	10,000 CYCLES	
2.3 Insulation Resistance	≥100MΩ DC500V	
2.4 Withstand Voltage	AC1500V 1 minute	
2.5 Soldering Technic	Hand Soldering	
2.6 Operating Temper	-25°C ~ +85°C	
2.7 Ambient Humidity Used	<85%RH	

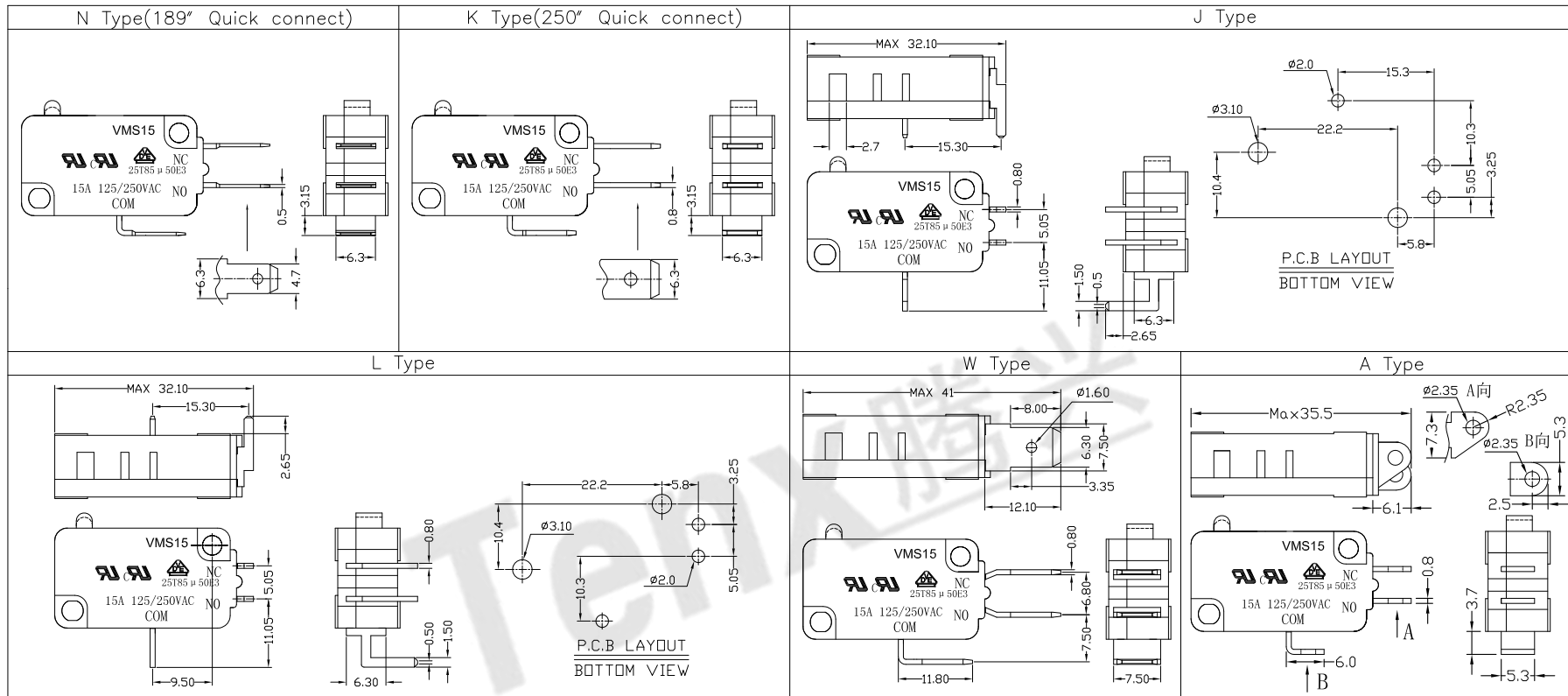
Tolerance:±0.2	UNITS mm	东莞市腾兴电子有限公司				
	MAT'L					
	SEE NOTE	TITLE:	PART NO.:			
	FINISH	MICRO SWITCH VMS15 SERIES	VMS15-03N-XX-V15			
	SEE NOTE	DR: Ricky 2017/6/8	DWG NO.:			
	Q'TY	CHKD: Ricky 2017/6/8	ATD-03X-XX-V15			
THESE DRAWINGS AND SPECIFICATIONS ARE THE PROPERTY OF ACCURATE INNOTECH INC AND SHALL NOT BE REPRODUCED, COPIED OR USED IN ANY MANNER WITHOUT THE PRIOR WRITTEN CONSENT OF ACCURATE INNOTECH INC.		APPD:	SCALE	SHEET	REV.	CUSTOMER DRAWING
			1:1	1/2	A	



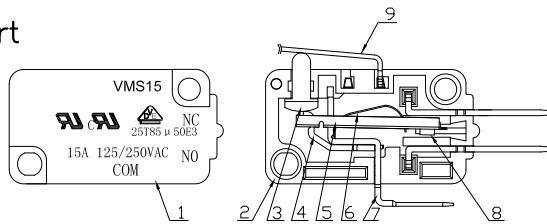
RoHS Compliant  
2002/95/EC

REV.	ECN.	NO.	APPD.

### Terminal Type



### Structure chart



### Material list

NO.	PARTS	MATERIAL	Q'TY	FINISHING	Tolerance: ±0.2	UNITS	东莞市腾兴电子有限公司					
9	Lever	SUS301	1		mm	SEE NOTE	TITLE:		PART NO.:			
8	Contact	Silver alloy	3				MICRO SWITCH VM15 SERIES		VMS15-03X-XX-V15			
7	Terminal	C2680	3	Silver Plating	SEE NOTE	FINISH	DR: Ricky 2017/6/8		DWG NO.:			
6	Spring Plate	C5210	1				CHKD: Ricky 2017/6/8		ATD-03X-XX-V15			
5	Change Plate	C2680	1		Q'TY	SEE NOTE	APPD:		SCALE	SHEET	REV.	CUSTOMER
4	Fixed Rod	C2680	1				11	2/2	A	DRAWING		
3	Button	PBT	1	Gray	THESE DRAWINGS AND SPECIFICATIONS ARE THE PROPERTY OF ACCURATE INNOTECH INC AND SHALL NOT BE REPRODUCED, COPIED OR USED IN ANY MANNER WITHOUT THE PRIOR WRITTEN CONSENT OF ACCURATE INNOTECH INC.							
2	Lower Housing	PBT	1	Black								
1	Upper Housing	PBT	1	Black								