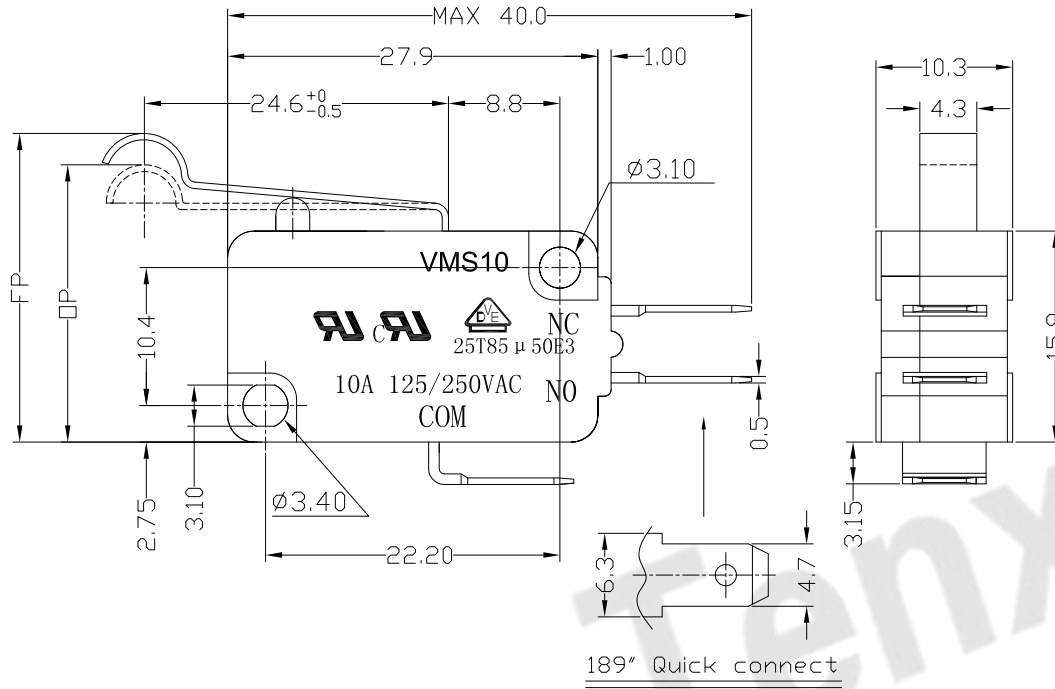




RoHS
Compliant
2002/95/EC

REV.	ECN.	NO.	APPD.

DIMENSIONS



1.Functional spec

1.1 Rated Voltage(AC)	125/250VAC
1.2 Rated Current(AC)	10A
1.3 Contact Resistance	≤100mΩ(Initial value)
1.4 Operating Force	80±25gf 125±40gf
1.5 Bounce Time	
1.6 Free Position	23.6±1.5mm
1.7 Operating Position	21.8±1.5mm
1.8 Position Travel	
1.9 Return Force	

2.Reliable Rating

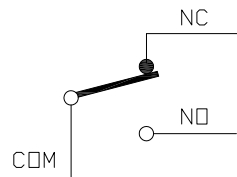
2.1 Mechanical Life	1,000,000 CYCLES
2.2 Electrical Life	10,000 CYCLES
2.3 Insulation Resistance	≥100MΩ DC500V
2.4 Withstand Voltage	AC1500V 1 minute
2.5 Soldering Technic	Hand Soldering
2.6 Operating Temper	-25°C ~ +85°C
2.7 Ambient Humidity Used	<85%RH

MODEL CODE

VMS 10-04 X-XX-V10

1 2 3 4 5 6

- Series : VMS
- Current Rating : 10=10A 125/250VAC
- Actuator : 00=Non-lever 01-99=Lever
- Termination : see chart (N/K/J/L/W/A)
(7=SPST-NO / 16=SPST-NC)
- Operating Force : see chart
- Contact type: V10=10Amps Contact



CIRCUIT DIAGRAM

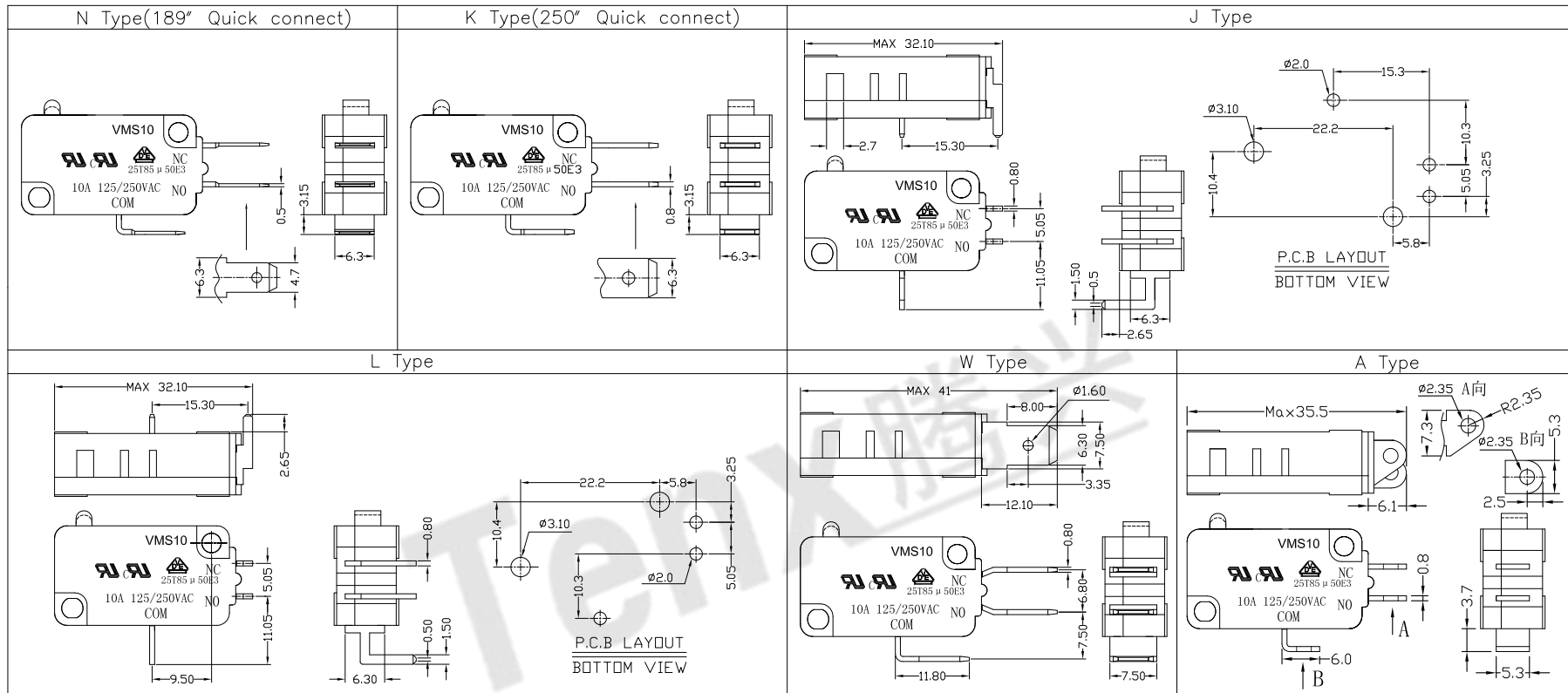
Tolerance:±0.2	UNITS mm	东莞市腾兴电子有限公司			
	MAT'L	TITLE: MICRO SWITCH VMS10 SERIES		PART NO: VMS10-04N-XX-V10	
	SEE NOTE	DR: Ricky 2017/6/7		DWG NO: ATD-04X-XX-V10	
	FINISH	CHKD: Ricky 2017/6/7		SCALE 1:1 SHEET 1/2 REV. A	
	SEE NOTE	Q'TY		CUSTOMER DRAWING	
THESE DRAWINGS AND SPECIFICATIONS ARE THE PROPERTY OF ACCURATE INNOTECH INC AND SHALL NOT BE REPRODUCED, COPIED OR USED IN ANY MANNER WITHOUT THE PRIOR WRITTEN CONSENT OF ACCURATE INNOTECH INC.		APPD:			



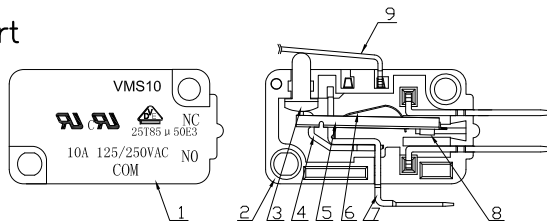
RoHS Compliant
2002/95/EC

REV.	ECN.	NO.	APPD.

Terminal Type



Structure chart



Material list

NO.	PARTS	MATERIAL	Q'TY	FINISHING
9	Lever	SUS301	1	
8	Contact	Silver alloy	3	
7	Terminal	C2680	3	Silver Plating
6	Spring Plate	C5210	1	
5	Change Plate	C2680	1	
4	Fixed Rod	C2680	1	
3	Button	PBT	1	Gray
2	Lower Housing	PBT	1	Black
1	Upper Housing	PBT	1	Black

Tolerance: ±0.2

UNITS mm

MAT'L

SEE NOTE

FINISH

SEE NOTE

Q'TY

THESE DRAWINGS AND SPECIFICATIONS ARE THE PROPERTY OF ACCURATE INNOTECH INC AND SHALL NOT BE REPRODUCED, COPIED OR USED IN ANY MANNER WITHOUT THE PRIOR WRITTEN CONSENT OF ACCURATE INNOTECH INC.

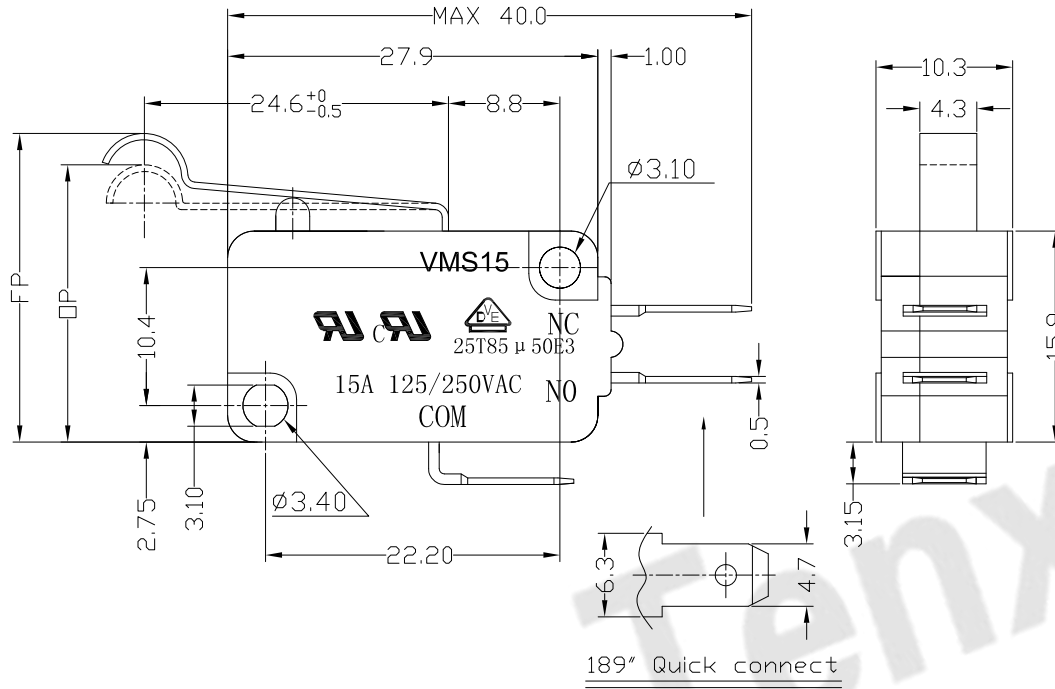
东莞市腾兴电子有限公司			
TITLE:	MICRO SWITCH VM10 SERIES	PART NO.:	VMS10-04X-XX-V10
DR:	Ricky 2017/6/7	DWG NO.:	ATD-04X-XX-V10
CHKD:	Ricky 2017/6/7	SCALE	1:1
APPD:		SHEET	2/2
		REV.	A
		CUSTOMER DRAWING	



RoHS
Compliant
2002/95/EC

REV.	ECN.	NO.	APPD.

DIMENSIONS



1.Functional spec

1.1 Rated Voltage(AC)	125/250VAC
1.2 Rated Current(AC)	15A
1.3 Contact Resistance	≤100mΩ(Initial value)
1.4 Operating Force	80±25gf 125±40gf
1.5 Bounce Time	
1.6 Free Position	23.6±1.5mm
1.7 Operating Position	21.8±1.5mm
1.8 Position Travel	
1.9 Return Force	

2.Reliable Rating

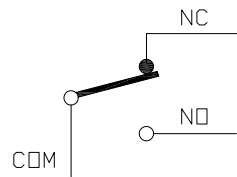
2.1 Mechanical Life	1,000,000 CYCLES
2.2 Electrical Life	10,000 CYCLES
2.3 Insulation Resistance	≥100MΩ DC500V
2.4 Withstand Voltage	AC1500V 1 minute
2.5 Soldering Technic	Hand Soldering
2.6 Operating Temper	-25°C ~ +85°C
2.7 Ambient Humidity Used	<85%RH

MODEL CODE

VMS 15-04 X- XX-V15

1 2 3 4 5 6

- Series : VMS
- Current Rating : 15=15A 125/250VAC
- Actuator : 00=Non-lever 01-99=Lever
- Termination : see chart (N/K/J/L/W/A)
(7=SPST-NO / 16=SPST-NC)
- Operating Force : see chart
- Contact type: V15=15Amps Contact



CIRCUIT DIAGRAM

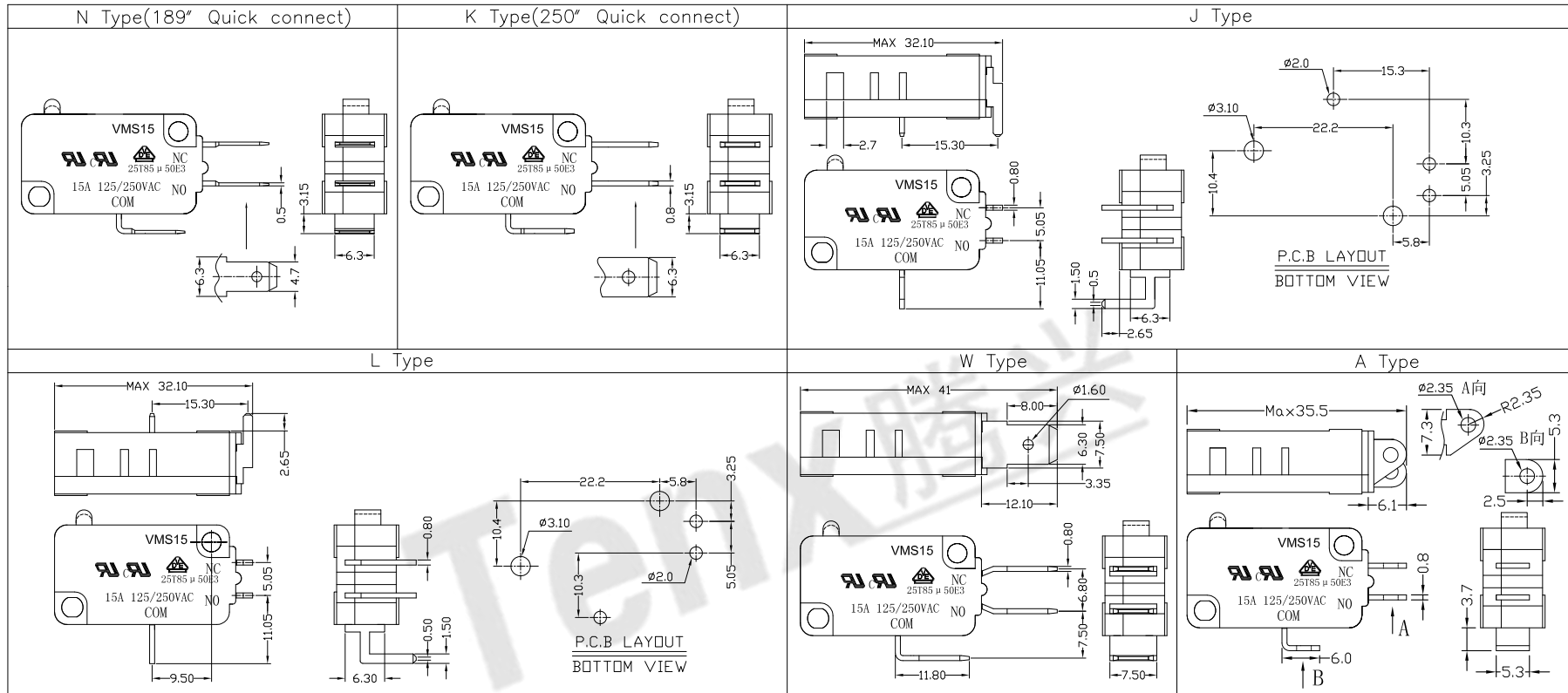
Tolerance: ±0.2	UNITS mm	东莞市腾兴电子有限公司				
	MAT'L					
	SEE NOTE	TITLE:	PART NO.:			
	FINISH	MICRO SWITCH VMS15 SERIES	VMS15-04N-XX-V15			
	SEE NOTE	DR: Ricky 2017/6/8	DWG NO.:			
	Q'TY	CHKD: Ricky 2017/6/8	ATD-04X-XX-V15			
THESE DRAWINGS AND SPECIFICATIONS ARE THE PROPERTY OF ACCURATE INNOTECH INC AND SHALL NOT BE REPRODUCED, COPIED OR USED IN ANY MANNER WITHOUT THE PRIOR WRITTEN CONSENT OF ACCURATE INNOTECH INC.		APPD:	SCALE	SHEET	REV.	CUSTOMER DRAWING
			1:1	1/2	A	



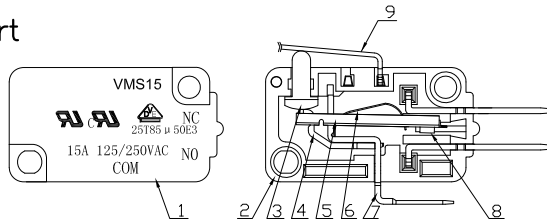
RoHS
Compliant
2002/95/EC

REV.	ECN.	NO.	APPD.

Terminal Type



Structure chart



Material list

NO.	PARTS	MATERIAL	Q'TY	FINISHING	Tolerance: ±0.2	UNITS	东莞市腾兴电子有限公司				
9	Lever	SUS301	1		mm	SEE NOTE	TITLE:	PART NO.:			
8	Contact	Silver alloy	3				MAT'L	MICRO SWITCH VM15 SERIES	VMS15-04X-XX-V15		
7	Terminal	C2680	3	Silver Plating		SEE NOTE	DR:	DWG NO.:			
6	Spring Plate	C5210	1			FINISH	<i>Ricky</i> 2017/6/8	ATD-04X-XX-V15			
5	Change Plate	C2680	1			SEE NOTE	CHKD:	SCALE SHEET REV. CUSTOMER			
4	Fixed Rod	C2680	1			Q'TY	<i>Ricky</i> 2017/6/8	11	2/2	A	DRAWING
3	Button	PBT	1	Gray			APPD:				
2	Lower Housing	PBT	1	Black							
1	Upper Housing	PBT	1	Black							

THESE DRAWINGS AND SPECIFICATIONS ARE THE PROPERTY OF ACCURATE INNOTECH INC AND SHALL NOT BE REPRODUCED, COPIED OR USED IN ANY MANNER WITHOUT THE PRIOR WRITTEN CONSENT OF ACCURATE INNOTECH INC.