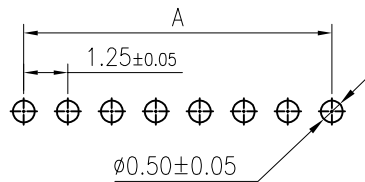
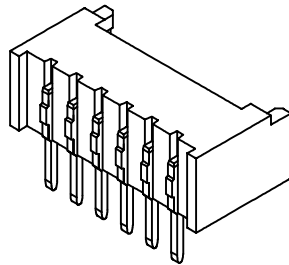


**RoHS**  
COMPLIANT



Recommended P.C.Board Layout



◆ SPECIFICATIONS

- Current rating: 1A AC, DC
- Voltage rating: 125V AC, DC
- Temperature range: -40°C ~ +105°C
- Insulation resistance: 100MΩ Min.
- Withstanding voltage: 250V AC/ minute.
- Contact resistance: 20mΩ Max.

Material:

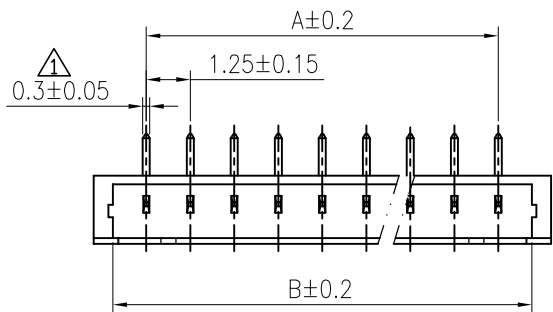
Insulator: PA46/PA9T/LCP UL 94V-0

Contact: Brass

Plating: Tin plated over Nickel

Circuits: 2~16

Suitable: KR1250 series Housing



Ordering Code:

C1250RD1\*\*07T0101PA

02: 2P

16: 16P

11: PA9T本色

13: LCP本色

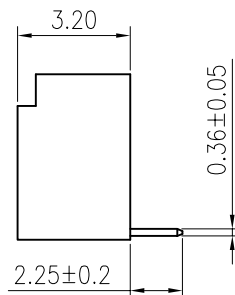
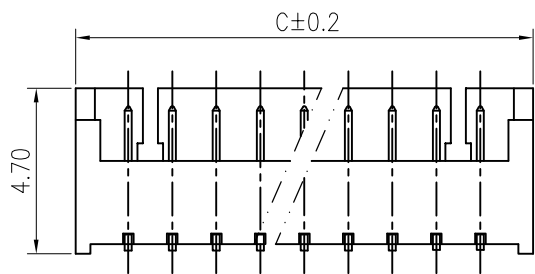
07: PA46本色

T01: 亮锡



P: 袋装

Cicuits	A	B	C
2	1.25	3.15	4.25
3	2.50	4.40	5.50
4	3.75	5.65	6.75
5	5.00	6.90	8.00
6	6.25	8.15	9.25
7	7.50	9.40	10.50
8	8.75	10.65	11.75
9	10.00	11.90	13.00
10	11.25	13.15	14.25
11	12.50	14.40	15.50
12	13.75	15.65	16.75
13	15.00	16.90	18.00
14	16.25	18.15	19.25
15	17.50	19.40	20.50
16	18.75	20.65	21.75



F					TOLERANCE	TITLE:	DRAWN: Arvin 2020.07.15	东莞市腾兴电子有限公司		
		更改料号及图框格式	Ru yi	2020.3.10	X. X ±0.30	MX 1.25 DIP 90° Wafer	CHECKED:			
		增加料号材质规格说明	Ru yi	2018.08.17	X. XX ±0.20		APPROVED:	PART NO.: C1250RD1****T0101PA		
	MARK	REVISION DESCRIPTION	SIGNATURE	DATE	X. XXX ±0.10	UNIT: mm	SCALE: N/A	SHEET: 1/1	PROJECTION	REV.: A2
	1	2	3	4	5	6	7	8	9	