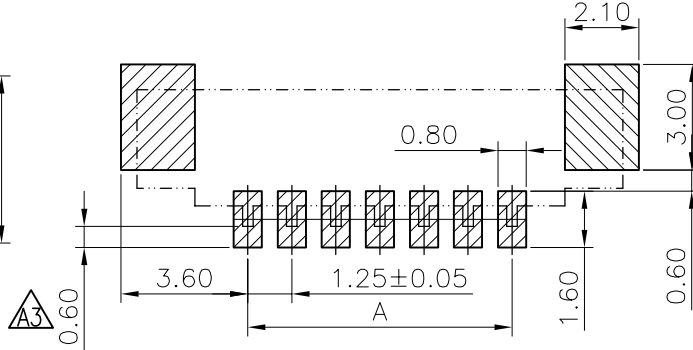
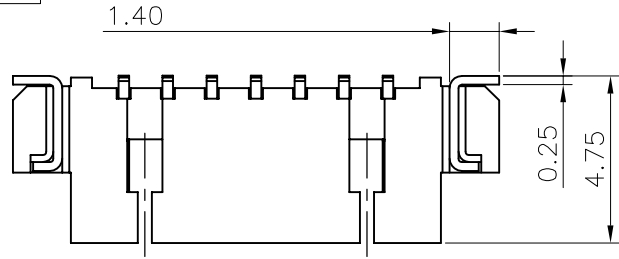
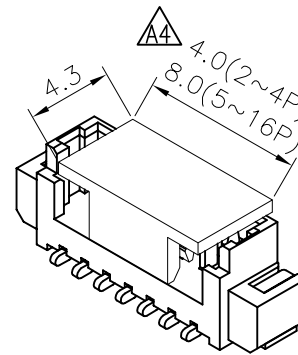
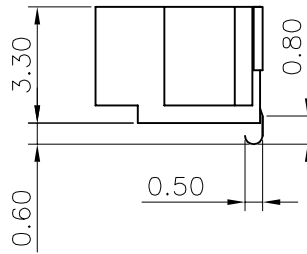
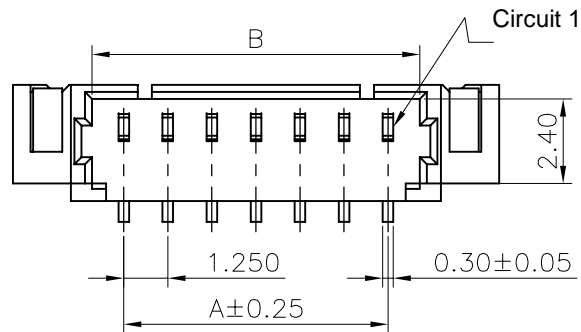


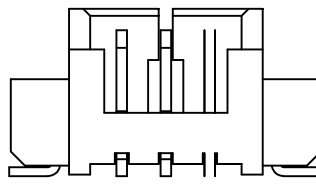
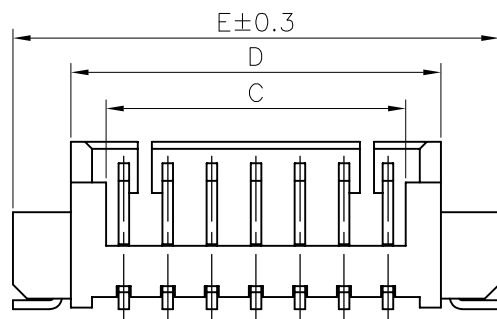
RoHS
COMPLIANT



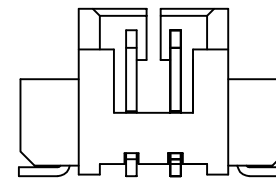
Recommended P.C.Board Layout



WITH CAP VIEW



3 PIN



2 PIN

◆ SPECIFICATIONS

- Current rating: 1A AC, DC
- Voltage rating: 125V AC, DC
- Temperature range: -40°C ~ +105°C
- Insulation resistance: 100MΩ Min.
- Withstanding voltage: 250V AC/ minute.
- Contact resistance: 20mΩ Max.

Material:

Insulator: LCP or PA46 UL 94V-0

Contact: Brass

Solder Nail: Brass

Plating: Matte Tin or gold plated over Nickel

Circuits: 2~16

Suitable: KR1250 series Housing

PART NO.:

C1250VS1*****01*A
 102=2P
 112=12P
 07: PA46 ecru
 08: PA46 black
 13: LCP ecru
 34: PA46 red
 R: package
 P: bags
 M01: Matte tin plating
 G02: Gold plated 1u"

CTK	DIMENSIONS				
	A	B	C	D	E
2	1.25	3.05	2.25	4.25	7.25
3	2.50	4.30	3.50	5.50	8.50
4	3.75	5.55	4.75	6.75	9.75
5	5.00	6.80	6.00	8.00	11.00
6	6.25	8.05	7.25	9.25	12.25
7	7.50	9.30	8.50	10.50	13.50
8	8.75	10.55	9.75	11.75	14.75
9	10.00	11.80	11.00	13.00	16.00
10	11.25	13.05	12.25	14.25	17.25
11	12.50	14.30	13.50	15.50	18.50
12	13.75	15.55	14.75	16.75	19.75
13	15.00	16.80	16.00	18.00	21.00
14	16.25	18.05	17.25	19.25	22.25
15	17.50	19.30	18.50	20.50	23.50
16	18.75	20.55	19.75	21.75	24.75

A5

更改料号及图框格式

TLX

2020.03.20

TOLERANCE

TITLE: MX1.25 SMF 180° WF

DRAWN: TLX 2020.03.20

东莞市腾兴电子有限公司

A4

4P产品装配吸盖由宽盖(8.0)变为窄盖(4.0)

Arvin

2019.5.07

X.X ±0.30

CHECKED:

A3

修正P.C.B Layout

Arvin

2019.1.04

X.XX ±0.20

APPROVED:

PART NO.: C1250VS1*****01*A

MARK

REVISION DESCRIPTION

SIGNATURE

DATE

X.XXX ±0.10

UNIT: mm

SCALE: N/A

SHEET: 1/1

PROJECTION

REV.: A5

DRAWING NO.: 1250WS101-A-S

1

2

3

4

5

6

7

8

9