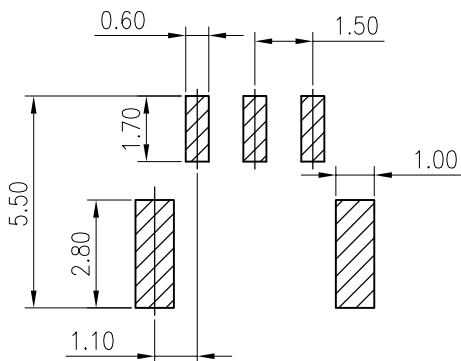
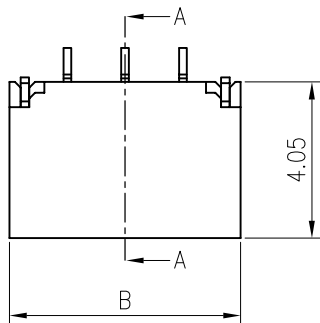


RoHS  
COMPLIANT




**SPECIFICATIONS**

Current rating: 1A AC, DC  
Voltage rating: 50V AC, DC  
Temperature range: -40°C ~ +105°C  
Insulation resistance: 100MΩ/ min.  
Withstanding voltage: 500V AC/ minute.  
Contact resistance: 30mΩ/ max.

**Material:**

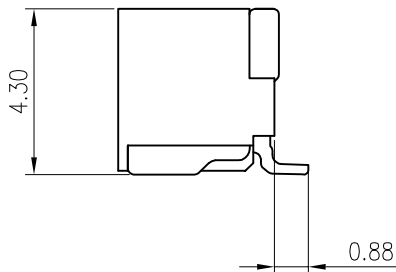
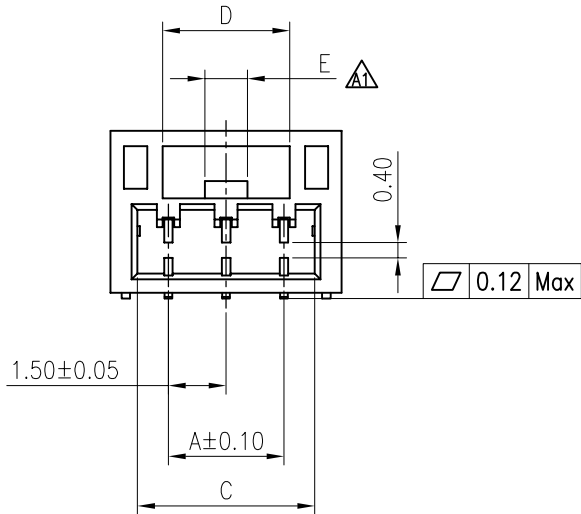
Insulator: PA9T or LCP UL94V-0  
Contact: copper alloy  
Finish: Matte-tin plated  
Mate with KR1506 series housing

**Ordering Code:**

C1506VS \*\*\*11M0101RA   
102: 2P  
106: 6P  
11: PA9T Natural  
13: LCP Natural  
M01: Matte-tin plated

Recommended P.C.B. Layout

Total tolerance: ±0.05mm



6P	7.50	10.90	9.50	6.55	4.35
5P	6.00	9.40	8.00	4.55	2.35
4P	4.50	7.90	6.50		
3P	3.00	6.00	4.60	3.45	1.60
2P	1.50	4.50	3.10	2.20	0.80
PIN数	A	B	C	D	E



MARK

1 2 3 4 5 6 7 8 9

**TOLERANCE**

X.X ±0.30  
X.XX ±0.20  
X.XXX ±0.10  
Angle ±2°

**TITLE:**

GH1.5 SMT 90度 WAFER

**DRAWN:** ru yi 2020.03.10

**CHECKED:**

**APPROVED:**

**UNIT:** mm **SCALE:** N/A

**SHEET:** 1/1

**PROJECTION** 

**东莞市腾兴电子有限公司**

**PART NO.:** C1506RS1\*\*\*\*M0101RA

**REV.:** A2 **DRAWING NO.:** 1506WHS01-A-S