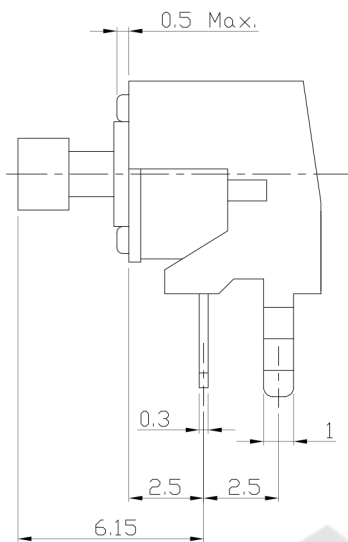
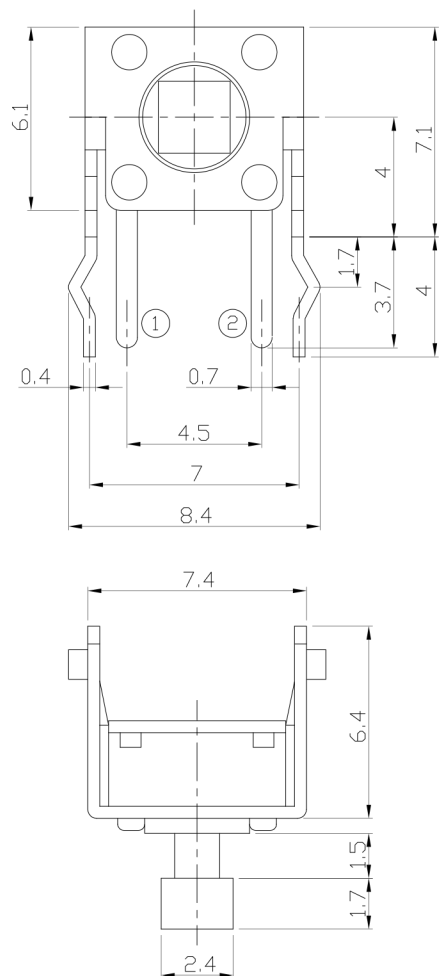




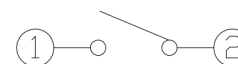
RoHS Compliant
2002/95/EC

| REV. | ECN. NO. | APPD. |
|------|----------|-------|
| | | |
| | | |

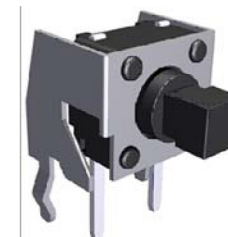
DIMENSIONS



CIRCUIT DIAGRAM

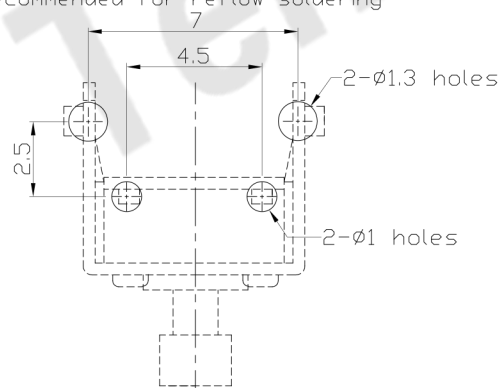


PRODUCT IMAGE



P.C.B MOUNTING PATTERN DIMENSION

The following soldering patterns are recommended for reflow soldering



ELECTRO-MECHANICAL CHARACTERISTICS

Refer to additional specifications

| | | |
|------------------------|--------------|-----------------|
| Rating | DC 12V 50mA | |
| Contact Resistance | 100mΩ Max. | |
| Travel | 0.25 ± 0.1mm | |
| Operating Force | 160±30gf | 250±50gf |
| Operating Life(cycles) | 100,000 | Phosphor Bronze |
| | 200,000 | Stainless Steel |

| | | |
|--|--------|-----------------|
| .X ±0.3 | X. ±2' | UNITS mm |
| | | MAT'L SEE NOTE |
| | | FINISH SEE NOTE |
| | | Q'TY |
| <small>THESE DRAWINGS AND SPECIFICATIONS ARE THE PROPERTY OF ACCURATE INNTECH INC AND SHALL NOT BE REPRODUCED, COPIED OR USED IN ANY MANNER WITHOUT THE PRIOR WRITTEN CONSENT OF ACCURATE INNTECH INC.</small> | | |

东莞市腾兴电子有限公司

| | |
|----------------------------------|-----------------------------------|
| TITLE: TACT SWITCH | PART NO.: AT-1102NT SERIES |
| DR: <i>Ricky</i> 2014/03/26 | DWG NO.: ASI-1102NT |
| CHKD: <i>Ricky</i> 2014/03/26 | SCALE SHEET REV. CUSTOMER DRAWING |
| APPD: | 1:1 1/1 A |