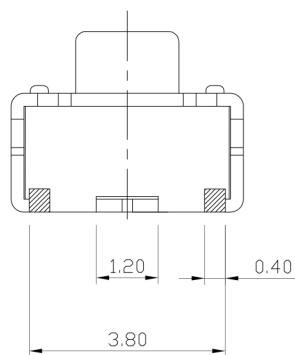
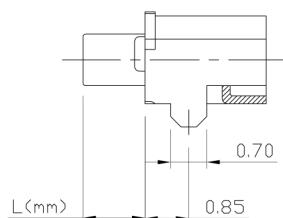
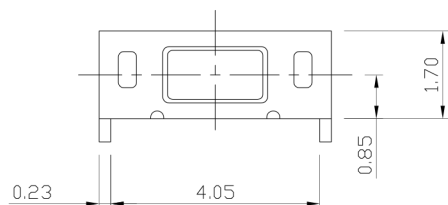
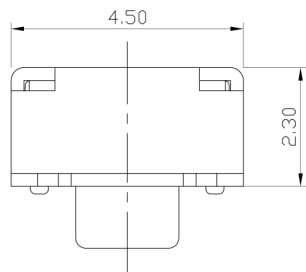




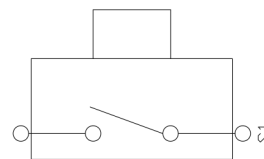
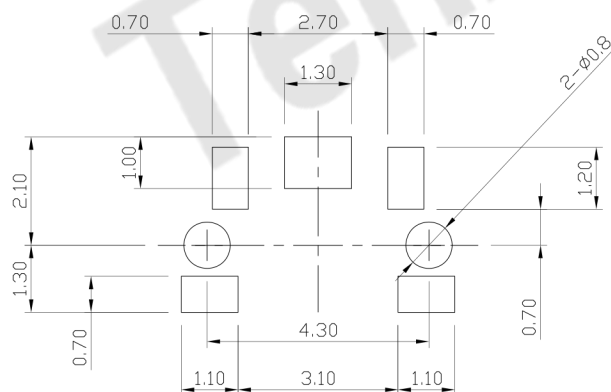
RoHS
Compliant
2002/95/EC

REV.	ECN.	NO.	APPD.

DIMENSIONS



P.C.B MOUNTING PATTERN DIMENSION



CIRCUIT DIAGRAM

MODEL CODE

AT-1131CN S

L(mm)	
-	1.2
S	0.5

ELECTRO-MECHANICAL CHARACTERISTICS

Refer to additional specifications

RATING	DC12V 50mA
CONTACT RESISTANCE	100mΩ MAX.
TRAVEL	0.2±0.1mm
OPERATING FORCE	160±50gf 250±50gf
OPERATING LIFE(cycles)	100,000

8					.X ±0.05	X. ±3'	UNITS	mm	东莞市腾兴电子有限公司 TITLE: TACT SWITCH PART NO.: AT-1131CN SERIES DR: <i>Ricky</i> 2015/05/07 DWG NO.: AKS-1131CN CHKD: <i>Ricky</i> 2015/05/07 APPD:
7					.XX ±0.01		MAT'L		
6							SEE NOTE		
5							FINISH		
4							SEE NOTE		
3							Q'TY		
2									
1									
NO.	PARTS	MATERIAL	Q'TY	FINISHING	<small>THESE DRAWINGS AND SPECIFICATIONS ARE THE PROPERTY OF ACCURATE INNOTECH INC AND SHALL NOT BE REPRODUCED, COPIED OR USED IN ANY MANNER WITHOUT THE PRIOR WRITTEN CONSENT OF ACCURATE INNOTECH INC.</small>				SCALE SHEET REV. CUSTOMER DRAWING 1:1 1/1 A