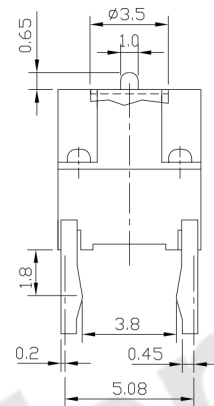
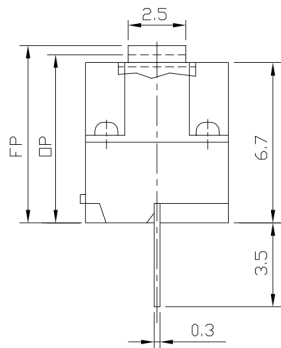
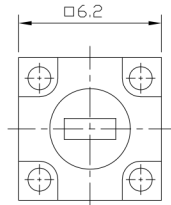




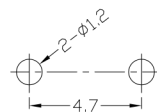
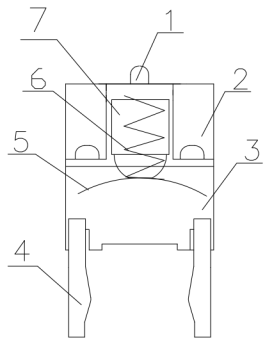
RoHS Compliant
2002/95/EC

REV.	ECN. NO.	APPD.

DIMENSIONS



Structure chart



P.C.B LAYOUT
TOP VIEW



CIRCUIT DIAGRAM

1.Functional spec

1.1 Rated Voltage	DC30V
1.2 Rated Current	50mA
1.3 Contact Resistance	≤100mΩ(Initial value)
1.4 Operating Force	50~100gf
1.5 Bounce Time	
1.6 Free Position	7.45±0.2mm
1.7 Operating Position	7.0±0.2mm
1.8 Position Travel	
1.9 Return Force	

2.Reliable Rating

2.1 Mechanical Life	100,000 CYCLES
2.2 Electrical Life	100,000 CYCLES
2.3 Insulation Resistance	≥100MΩ DC250V
2.4 Withstand Voltage	AC600V 1 minute
2.5 Soldering Technic	Hand Soldering
2.6 Operating Temper	-20°C ~ +70°C
2.7 Ambient Humidity Used	<85%RH

Material list

NO.	PARTS	MATERIAL	Q'TY	FINISHING
8				
7	Thimble	PBT	1	
6	Spring	SWP	1	
5	Spring Plate	SUS301	1	
4	Terminal	C2680	2	
3	Base	PBT	1	
2	Case	PBT	1	
1	Button	PBT	1	

Tolerance:±0.2		UNITS	东莞市腾兴电子有限公司			
		mm				
		MAT'L				
		SEE NOTE	TITLE: TACT SWITCH		PART NO.: AT-00TL-60G	
		FINISH	DR: Ricky 2017/7/20		DWG NO.: ATD-0TL-60G	
		SEE NOTE	CHKD: Ricky 2017/7/20		SCALE SHEET REV. CUSTOMER	
		Q'TY	APPD:		1:1	1/1 A DRAWING

THESE DRAWINGS AND SPECIFICATIONS ARE THE PROPERTY OF ACCURATE INNOVATION INC AND SHALL NOT BE REPRODUCED, COPIED OR USED IN ANY MANNER WITHOUT THE PRIOR WRITTEN CONSENT OF ACCURATE INNOVATION INC.