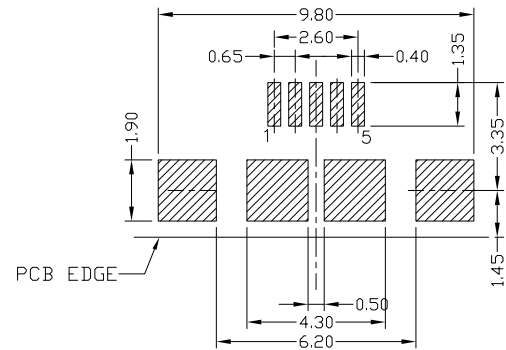
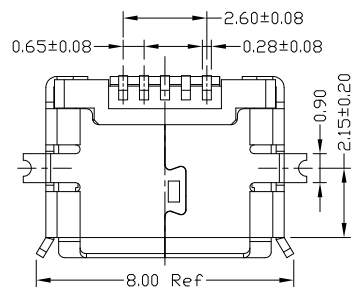
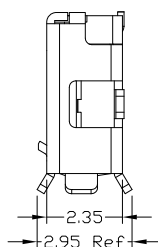
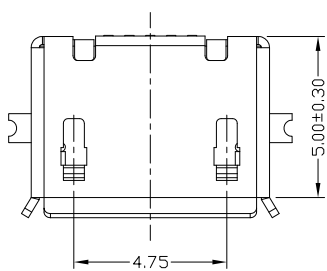
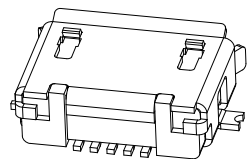
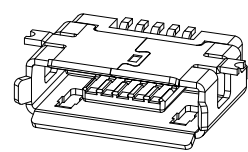
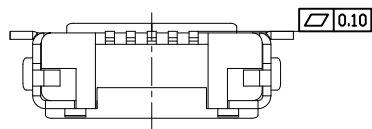
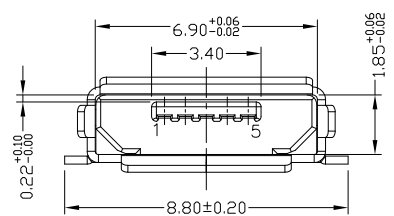

RoHS Compliant
 Process Capable 2002/95/EC
Halogen Free

REV.	ECN.	NO.	APPD.



RECOMMENDED PCB LAYOUT



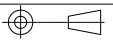
NOTES:

- ELECTRICAL:**
 - VOLTAGE CURRENT RATING: PIN1&5 1.8AMP MAX / PIN2&3&4 1AMP MAX. ,30V AC;
 - INSULATION RESISTANCE: 100MΩ MIN;
 - CONTACT RESISTANCE: 30mΩ MAX;
 - WITHSTANDING VOLTAGE: 100V AC; FOR 1 MIN.
 - OPERATING TEMPERATURE: -30°C TO +80°C.
- Mechanical:**
 - Mating Force: 35N MAX
 - Unmating Force: 10N MIN.
- DIMENSIONS MARKED "▼" TO BE CHECKED BY Q.C & IPQC.**

4.PART NO.

MUZF-05*T-4BHUA146
 1:AU 1U*
 6:AU 30U*
 T:TIN
 N:NICKEL
 W:WHITE
 B:BLACK
 1:PBT
 2:PA6T
 3:PA9T
 4:LCP

Bill of materials:

E	3	SHELL	COPPER ALLOY	1	PLATED TIN	X. ±0.35	X.* ±2*	UNITS	mm	东莞市腾兴电子有限公司 TITLE: MICRO USB AB TYPE F 5P SMT 无脚柱 PART NO.: MUZF-05*T-4BHUA146 DR: <i>Ricky</i> 2018/5/7 DWG NO.: AII-HUA146 CHKD: <i>Ricky</i> 2018/5/7 APPD:	
	2	HOUSING	LCP+30%GF	1	UL94V-0	.X ±0.30	.X* ±1*	MAT'L	SEE NOTE		
	1	TERMINAL	COPPER ALLOY	5	PLATED GOLD	.XX ±0.25	.XX*	FINISH	SEE NOTE		
	NO	PARTS	MATERIAL	QTY	FINISHING	.XXX ±0.15	.XXX*	Q'TY	SEE NOTE		
<small>THESE DRAWINGS AND SPECIFICATIONS ARE THE PROPERTY OF ACCURATE INNTECH INC. AND SHALL NOT BE REPRODUCED, COPIED OR USED IN ANY MANNER WITHOUT THE PRIOR WRITTEN CONSENT OF ACCURATE INNTECH INC.</small>								SCALE	SHEET	REV.	CUSTOMER DRAWING
								5:1	1/1	A	