

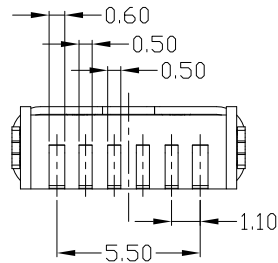
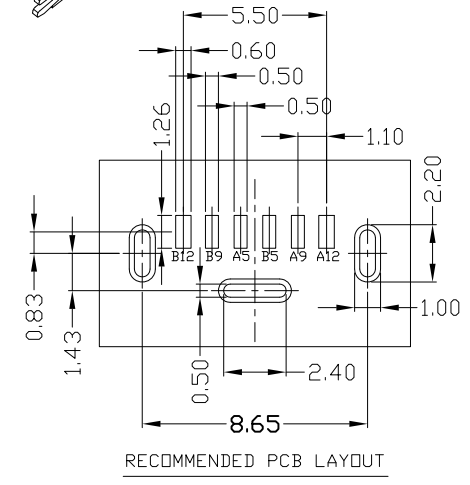
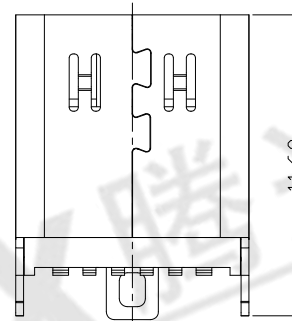
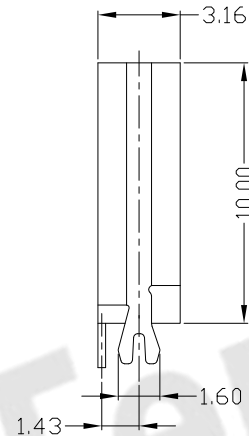
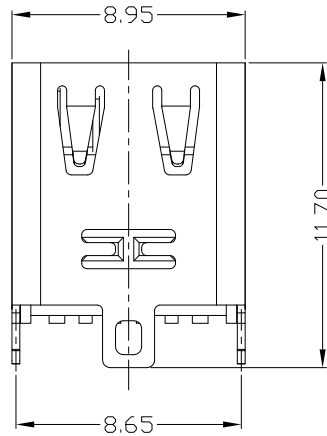
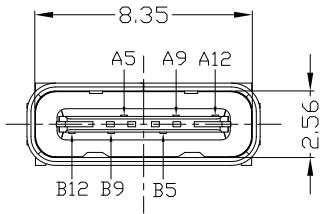
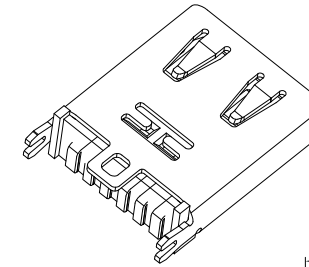


RoHS
Compliant
2002/95/EC

USB TYPE-C 6P
RECEPTACLE INTERFACE PIN ASSIGNMENTS

REV.	ECN.	NO.	APPD.

B12	GND
B9	VBUS
B5	CC2
A5	CC1
A9	VBUS
A12	GND
PIN	SIGNAL NAME



NOTES:

1. ELECTRICAL:
 - 1) CURRENT RATING: 5AMP MIN FOR VBUS; VOLTAGE RATING: 20VAC MAX
1.25A FOR GND PIN. 0.25A MIN FOR OTHER.
 - 2) INSULATION RESISTANCE: 100MΩMIN;
 - 3) CONTACT RESISTANCE: 40mΩMAX;
 - 4) WITHSTANDING VOLTAGE: 100V AC;
 - 5) OPERATING TEMPERATURE: -25°C TO +85°C.
2. Mechanical:
 - 1) INSERTION Force: 5~20N.
 - 2) EXTRACTION Force: 8~20N.
3. DIMENSIONS MARKED "▼" TO BE CHECKED BY Q.C & IPQC.

4. PART NO.

USCF-061N-4BQZ20

1: Au 1U*
2: Au 3U*
5: Au 15U*
6: Au 30U*

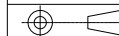
W: WHITE
B: BLACK
1: PBT
2: PA6T
3: PA9T
4: LCP

Bill of materials:

NO	PARTS	MATERIAL	QTY	FINISHING
4	SHRAPNEL	STAINLESS STEEL	1	PLATED NICKEL
3	SHELL	STAINLESS STEEL	1	PLATED NICKEL
2	TERMINAL	COPPER ALLOY	6	PLATED GOLD/TIN
1	HOUSING	LCP+30%GF	1	UL94V-0

X: ±0.35 .X ±0.3 .XX ±0.25	X: ±2* .X* ±1* .XX*	UNITS mm	东莞市腾兴电子有限公司 TITLE: USB TYPE CF 直立式 SMT 6P L10.0mm PART NO.: USCF-061N-4BQZ20 DR: gan 2018/10/25 DWG NO.: AII-QZ20 CHKD: gan 2018/10/25 SCALE: 1:1 SHEET: 1/1 REV: B CUSTOMER DRAWING			
		MAT'L SEE NOTE				
.XXX ±0.15	.XXX*	FINISH SEE NOTE	Q'TY	APPD:		

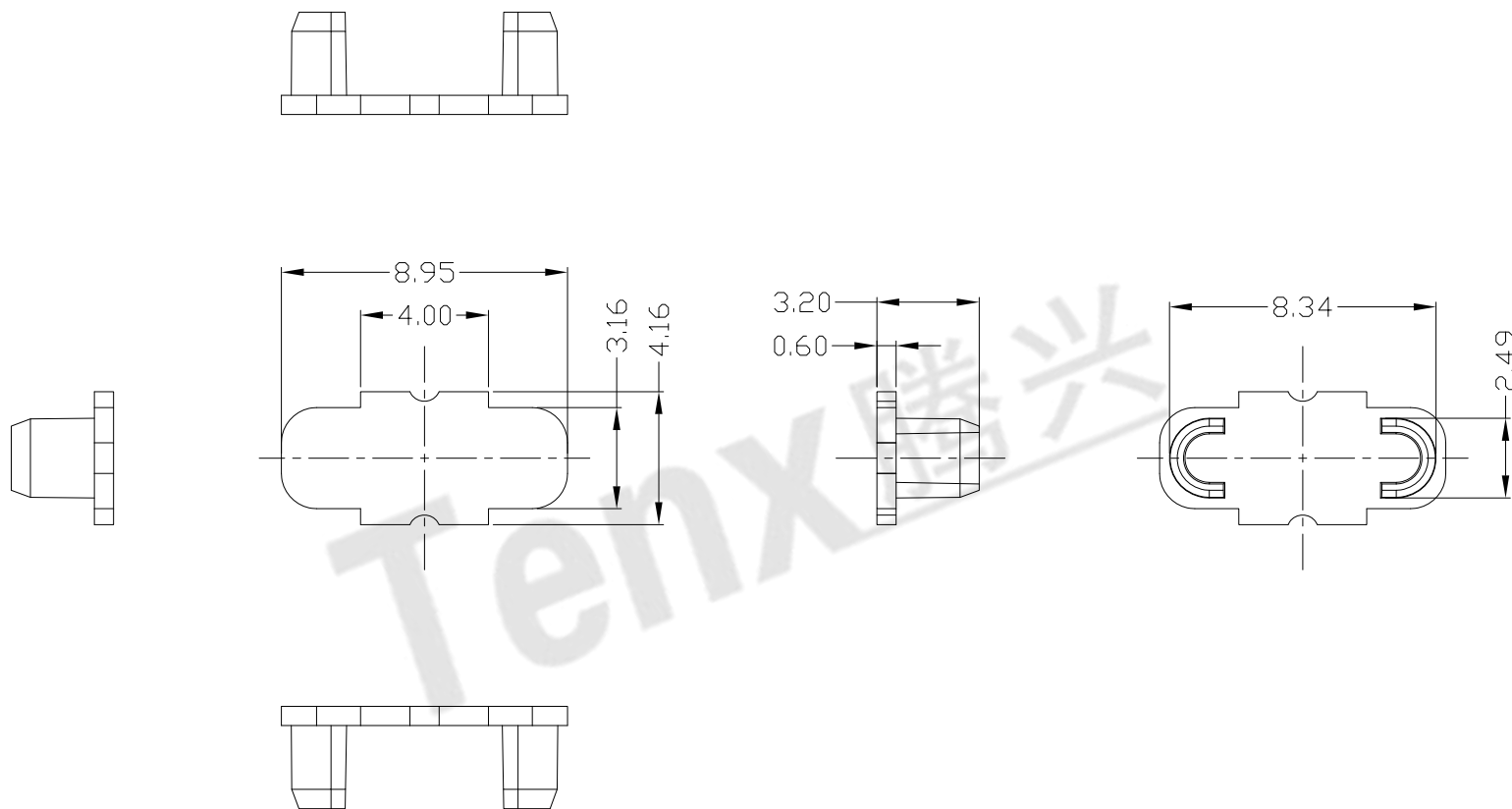
THESE DRAWINGS AND SPECIFICATIONS ARE THE PROPERTY OF ACCURATE INNO TECH INC AND SHALL NOT BE REPRODUCED, COPIED OR USED IN ANY MANNER WITHOUT THE PRIOR WRITTEN CONSENT OF ACCURATE INNO TECH INC.





RoHS
Compliant
2002/95/EC

REV.	ECN.	NO.	APPD.



Bill of materials:

					X. ±0.35	X.' ±2'	UNITS	东莞市腾兴电子有限公司						
					.X ±0.3	.X' ±1'	mm							
					.XX ±0.25	.XX'	MAT'L	SEE NOTE		TITLE: 胶帽		PART NO.: USCF-061N-4BQZ20		
					.XXX ±0.15	.XXX'	FINISH	SEE NOTE		DR: gan 2018/10/25		DWG NO.: AII-QZ20		
1	CAP	LCP+30%GF	1	UL94V-0	THESE DRAWINGS AND SPECIFICATIONS ARE THE PROPERTY OF ACCURATE INNOTECH INC AND SHALL NOT BE REPRODUCED, COPIED OR USED IN ANY MANNER WITHOUT THE PRIOR WRITTEN CONSENT OF ACCURATE INNOTECH INC.		Q'TY	CHKD: gan 2018/10/25		SCALE		SHEET	REV.	CUSTOMER
NO	PARTS	MATERIAL	QTY	FINISHING				APPD:		1:1	1/1	B	DRAWING	