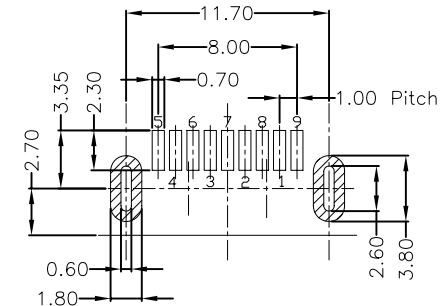
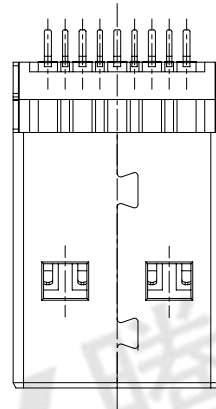
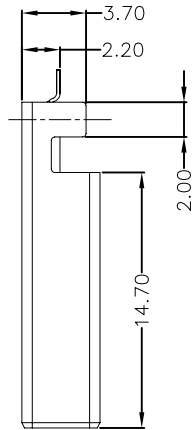
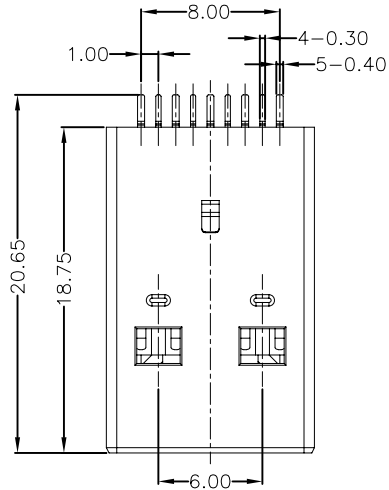


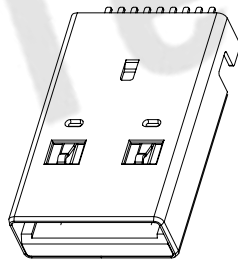
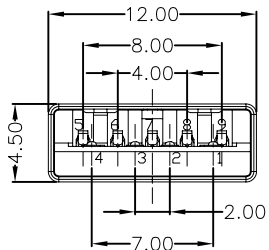


RoHS  
Compliant  
2002/95/EC

REV	LTR	DESCRIPTION	DATE	REVISER	APPD



RECOMMENDED PCB LAYOUT



NOTES:

- ELECTRICAL:
    - VOLTAGE CURRENT RATING: 1.5AMP, 30V AC;
    - INSULATION RESISTANCE: 100MΩ MIN;
    - CONTACT RESISTANCE: 30mΩ MAX;
    - WITHSTANDING VOLTAGE: 500V AC;
    - OPERATING TEMPERATURE: -40°C TO +85°C.
  - Mechanical:
    - Mating Force: 35N MAX.
    - Unmating Force: 10N MIN.
- NOTE: 1. DIMENSIONS MARKED "▼" TO BE CHECKED BY Q.C & IPQC.

4. PART NO.

USAM-095N-4BLVS16  
 1: Au 1U"  
 5: Au 15U"  
 6: Au 30U"  
 W: WHITE  
 B: BLACK  
 BL: BLUE  
 1: PBT  
 2: PA6T  
 3: PA9T  
 4: LCP

Bill of materials:

NO	PARTS	MATERIAL	QTY	FINISHING	UNITS	mm	东莞市腾兴电子有限公司				
3	SHELL	SPCC	1	PLATED NICKEL	X. ±0.35	X.' ±2'	SEE NOTE	TITLE: USB 3.0 AM 沉板SMT 无柱		PART NO.: USAM-095N-4BLVS16	
2	HOUSING	LCP+30%GF	1	UL94V-0	.X ±0.3	.X' ±1'		DR: gan 2015/4/6		DWG NO.: AII-VS16	
1	TERMINAL	COPPER ALLOY	9	PLATED GOLD/TIN	.XX ±0.25	.XX'		CHKD: gan 2015/4/6		SCALE SHEET REV. CUSTOMER DRAWING	
					.XXX ±0.15	.XXX'		APPD: gan 2015/4/6			

THESE DRAWINGS AND SPECIFICATIONS ARE THE PROPERTY OF ACCURATE INNO TECH INC AND SHALL NOT BE REPRODUCED, COPIED OR USED IN ANY MANNER WITHOUT THE PRIOR WRITTEN CONSENT OF ACCURATE INNO TECH INC

