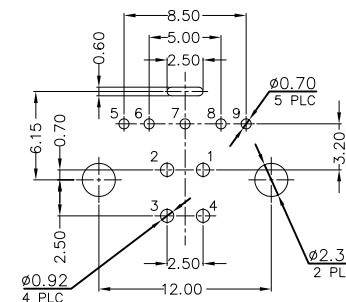
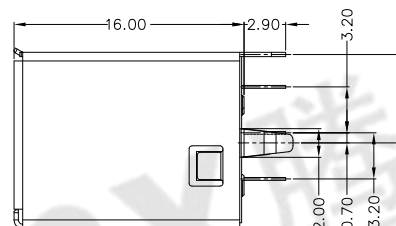
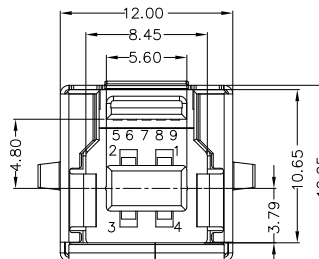
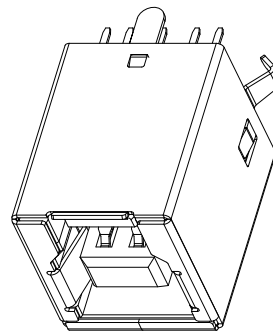
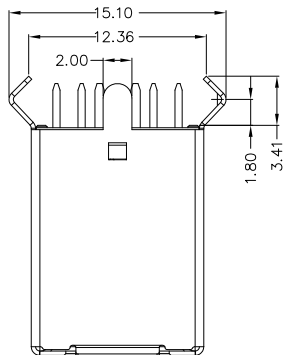




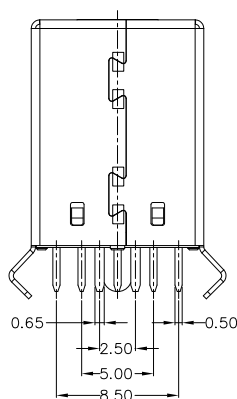
RoHS
Compliant
2002/95/EC

| REV. | ECN. NO. | APPD. |
|------|----------|-------|
| | | |
| | | |
| | | |



RECOMMEND P.C.B LAYOUT COMPONENT SIDE
DEFAUET TOLERANCES: ±0.05 (PCB T=1.6mm)

| Pin NUMBER | SIGNAL NAME |
|------------|-------------|
| 1 | VBUS |
| 2 | D- |
| 3 | D+ |
| 4 | GND |
| 5 | StdB_SSTX- |
| 6 | StdB_SSTX+ |
| 7 | GND_DRAIN |
| 8 | StdB_SSRX- |
| 9 | StdB_SSRX+ |
| Shell | Shield |



NOTES:

- ELECTRICAL:
 - VOLTAGE CURRENT RATING: 1.8AMP,30V AC;
 - INSULATION RESISTANCE: 100MΩ MIN;
 - CONTACT RESISTANCE: 30mΩ MAX;
 - WITHSTANDING VOLTAGE: 100V AC;
 - OPERATING TEMPERATURE:-55°C TO +85°C.
- Mechanical:
 - Mating Force: 35N MAX
 - Unmating Force: 10N MIN.
- NOTE:1.DIMENSIONS MARKED "▼" TO BE CHECKED BY Q.C & IPQC.

4. PART NO.

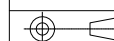
USBF-09*N-4BLPU30

1:Au 1U*
5:Au 15u*
6:Au 30U*
W:WHITE
B:BLACK
BL:BLUE
1:PBT
2:PA6T
3:PA9T
4:LCP

Bill of materials:

| NO | PARTS | MATERIAL | QTY | FINISHING | X. ±0.35 | X.' ±2' | UNITS |
|----|--------------------|--------------|-----|-----------------|------------|---------|----------|
| 5 | COVER | LCP+30%GF | 1 | UL94V-0 | X. ±0.35 | X.' ±2' | mm |
| 4 | HOUSING | LCP+30%GF | 1 | UL94V-0 | .X ±0.3 | .X' ±1' | MAT'L |
| 3 | SHELL | COPPER ALLOY | 1 | PLATED NICKEL | .XX ±0.25 | .XX' | SEE NOTE |
| 2 | SPRING CONTACT(4P) | COPPER ALLOY | 4 | PLATED GOLD/TIN | .XXX ±0.15 | .XXX' | FINISH |
| 1 | FLAT CONTACT(5P) | COPPER ALLOY | 5 | PLATED GOLD/TIN | | | SEE NOTE |
| | | | | | | | Q'TY |

THESE DRAWINGS AND SPECIFICATIONS ARE THE PROPERTY OF ACCURATE INNO TECH INC AND SHALL NOT BE REPRODUCED, COPIED OR USED IN ANY MANNER WITHOUT THE PRIOR WRITTEN CONSENT OF ACCURATE INNO TECH INC



东莞市腾兴电子有限公司

| | | | |
|--------|---------------------|------------------|-------------------|
| TITLE: | USB 3.0 BF DIP 180度 | PART NO.: | USBF-09XN-4BLPU30 |
| DR: | Ricky 2018/11/20 | DWG NO.: | AII-PU30 |
| CHKD: | Ricky 2018/11/20 | SCALE | 1:1 |
| APPD: | | SHEET | 1/1 |
| | | REV. | B |
| | | CUSTOMER DRAWING | |