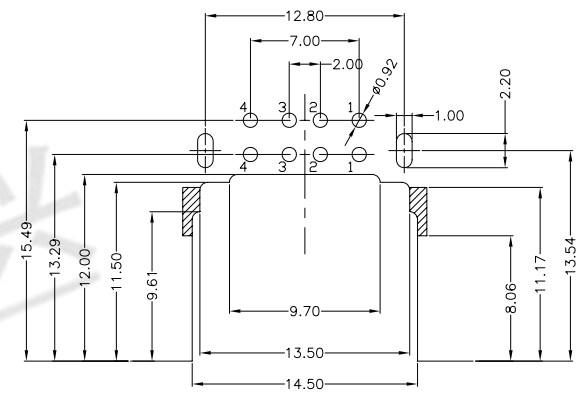
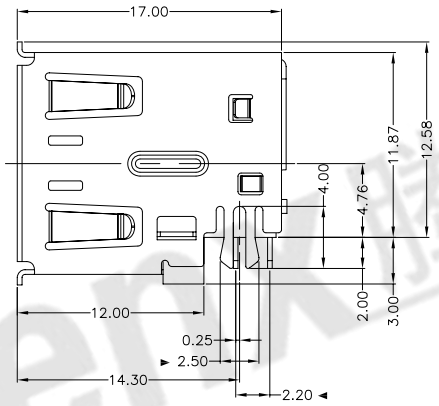
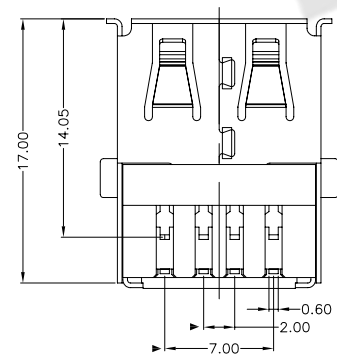
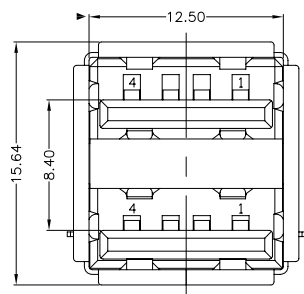
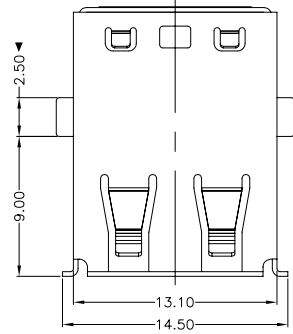




RoHS
Compliant
2002/95/EC

REV	LTR	DESCRIPTION	DATE	REVISER	APPD



RECOMMENDED PCB LAYOUT

- NOTES:
- ELECTRICAL:
 - VOLTAGE CURRENT RATING:1.0AMP,30V AC;
 - INSULATION RESISTANCE: 1000MΩ MIN;
 - CONTACT RESISTANCE: 30mΩ MAX;
 - WITHSTANDING VOLTAGE: 500V AC;
 - OPERATING TEMPERATURE:-55°C TO +105°C.
 - Mechanical:
 - Mating Force: 35N MAX
 - Unmating Force: 10N MIN.
 - NOTE:1.DIMENSIONS MARKED "▼" TO BE CHECKED BY Q.C & IPQC.

4. PART NO.
USAF-08XN-1XR32
1:Au 1U"
5:Au 15U"
6:Au 30U"
W:WHITE
B:BLACK
1:PBT
2:PA6T
3:PA9T
4:LCP

Bill of materials:

NO	PARTS	MATERIAL	QTY	FINISHING			UNITS	mm	东莞市腾兴电子有限公司						
6	CLIP	STAINLESS STEEL	1	PLATED NICKEL	X. ±0.35	X.' ±2'			TITLE: USB AF 90° 双层沉板反向		PART NO.: USAF-08XN-1XR32		DWG NO.: AII-R32		
5	BOTTOM PLUG	PBT/LCP+30%GF	1	UL94V-0	.X ±0.3	.X' ±1'									
4	BACK SHELL	SPCC	1	PLATED NICKEL	.XX ±0.25	.XX'	SEE NOTE		DR: gan 2014/1/12		SCALE: 1:1		SHEET: 1/1	REV. B	CUSTOMER DRAWING
3	SHELL	COPPER ALLOY	1	PLATED NICKEL	.XXX ±0.15	.XXX'	SEE NOTE		CHKD: gan 2014/1/12		REV. B				
2	HOUSING	PBT/LCP+30%GF	1	UL94V-0					APPD:						
1	TERMINAL	COPPER ALLOY	8	PLATED GOLD/TIN					THESE DRAWINGS AND SPECIFICATIONS ARE THE PROPERTY OF ACCURATE INNOTECH INC AND SHALL NOT BE REPRODUCED, COPIED OR USED IN ANY MANNER WITHOUT THE PRIOR WRITTEN CONSENT OF ACCURATE INNOTECH INC						