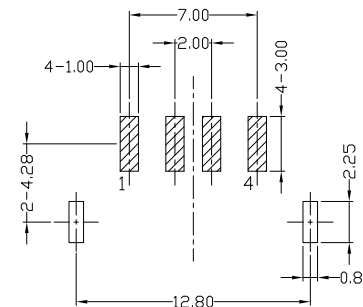
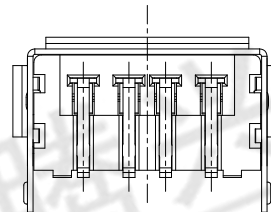
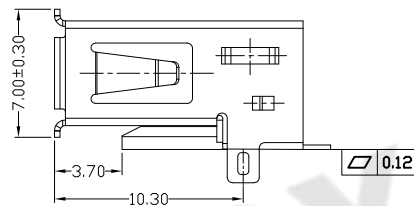
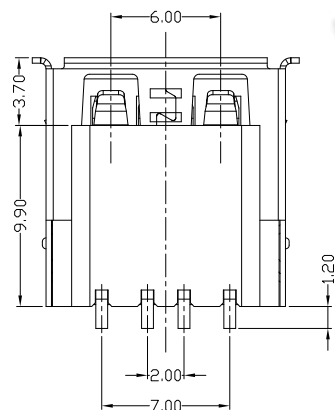
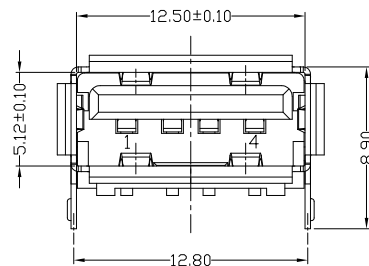
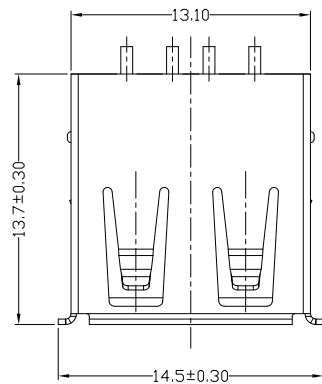




RoHS
Compliant
2002/95/EC

| REV. | ECN. NO. | APPD. |
|------|----------|-------|
| | | |
| | | |



RECOMMENDED P.C.B. LAYOUT

NOTES:

- ELECTRICAL:
 - VOLTAGE CURRENT RATING: 2AMP, 30V AC;
 - INSULATION RESISTANCE: 1000MΩ MIN;
 - CONTACT RESISTANCE: 30mΩ MAX;
 - WITHSTANDING VOLTAGE: 500V AC;
 - OPERATING TEMPERATURE: -55°C TO +85°C.
- Mechanical:
 - Mating Force: 35N MAX
 - Unmating Force: 10N MIN.
- DIMENSIONS MARKED "▼"
TO BE CHECKED BY Q.C & IPQC.

4.PART NO.

USAF-04*N-4XV613

1: Au 1U*
6: Au 30U*

W: WHITE
B: BLACK
1: PBT
2: PA6T
3: PA9T
4: LCP

| NO | PARTS | MATERIAL | QTY | FINISHING | .X ±0.30 | .X' ±1' | UNITS |
|---|----------|-------------------|-----|-----------------|------------|---------|----------|
| 5 | | | | | .X ±0.30 | .X' ±1' | mm |
| 4 | | | | | .XX ±0.20 | .XX' | MAT'L |
| 3 | HOUSING | LCP+30%GF | 1 | UL94V-0 | .XXX ±0.10 | .XXX' | SEE NOTE |
| 2 | SHELL | COPPER ALLOY/SPCC | 1 | PLATED NICKEL | | | FINISH |
| 1 | TERMINAL | COPPER ALLOY | 4 | PLATED GOLD/TIN | | | SEE NOTE |
| <small>THESE DRAWINGS AND SPECIFICATIONS ARE THE PROPERTY OF ACCURATE INNTECH INC AND SHALL NOT BE REPRODUCED, COPIED OR USED IN ANY MANNER WITHOUT THE PRIOR WRITTEN CONSENT OF ACCURATE INNTECH INC</small> | | | | | | | |
| | | | | | | | Q'TY |

| 东莞市腾兴电子有限公司 | | | |
|---|--|-------------------------------|------------------|
| TITLE: USB AF SMT 型直脚有凸包无柱 端子外露1.20 | | PART NO.: USAF-041N-4XV613 | |
| DR: Ricky 2017/12/13 | | DWG NO.: AII-V613 | |
| CHKD: Ricky 2017/12/13 | | SCALE | SHEET |
| APPD: | | 1:1 | 1/1 |
| | | REV. | CUSTOMER DRAWING |
| | | B | |