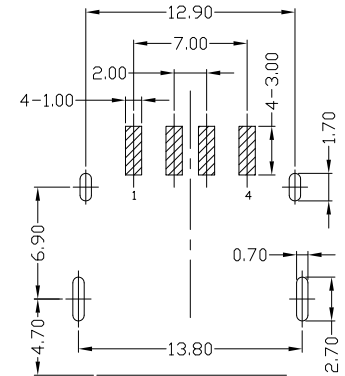
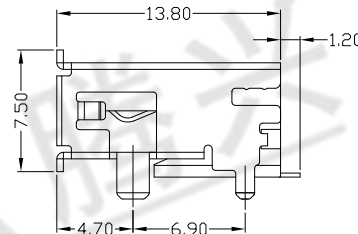
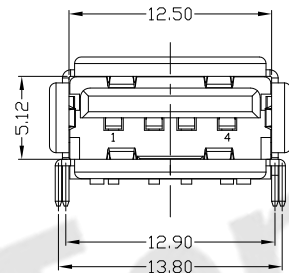
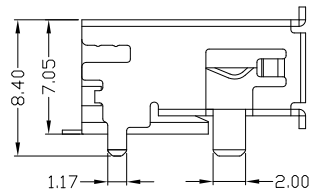
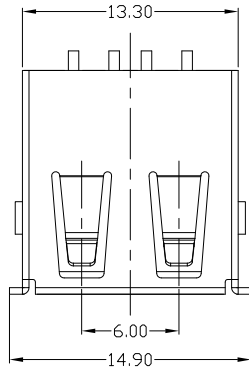


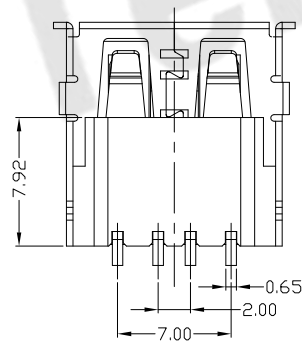


RoHS
Compliant
2002/95/EC

REV.	ECN. NO.	APPD.



RECOMMEND PCB LAYOUT



NOTES:

1. ELECTRICAL:

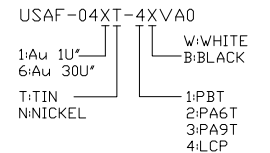
- 1) VOLTAGE CURRENT RATING: 2.0AMP,30V AC;
- 2) INSULATION RESISTANCE: 1000MΩ MIN;
- 3) CONTACT RESISTANCE: 30mΩ MAX;
- 4) WITHSTANDING VOLTAGE: 500V AC;
- 5) OPERATING TEMPERATURE:-55°C TO +85°C.

2. Mechanical:

- 1) Mating Force: 35N MAX
- 2) Unmating Force: 10N MIN.

3. DIMENSIONS MARKED "▼" TO BE CHECKED BY Q.C & IPQC.

4.PART NO.



Bill of materials:

NO	PARTS	MATERIAL	QTY	FINISHING	X. ±0.35	X.' ±2'	UNITS	mm	东莞市腾兴电子有限公司					
3	HOUSING	LCP+30%GF	1	UL94V-0	.X ±0.3	.X' ±1'	MAT'L	SEE NOTE	TITLE: USB AF 全贴板(外壳T=0.4)		PART NO.: USAF-04XT-4XVA0			
2	SHELL	SPCC	1	PLATED TIN/NICKEL	.XX ±0.25	.XX'	FINISH	SEE NOTE	DR: gan 2017/3/15		DWG NO.: AII-VA0			
1	TERMINAL	COPPER ALLOY	4	PLATED GOLD/TIN	.XXX ±0.15	.XXX'	Q'TY	SEE NOTE	CHKD: gan 2017/3/15		SCALE	SHEET	REV.	CUSTOMER DRAWING
					THESE DRAWINGS AND SPECIFICATIONS ARE THE PROPERTY OF ACCURATE INNOTECH AND SHALL NOT BE REPRODUCED, COPIED OR USED IN ANY MANNER WITHOUT THE PRIOR WRITTEN CONSENT OF ACCURATE INNOTECH INC			APPD:		1:1	1/1	B		