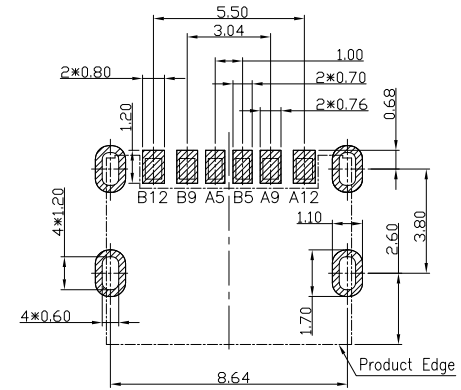
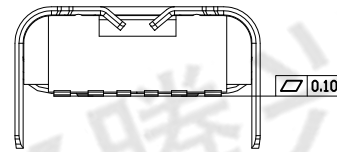
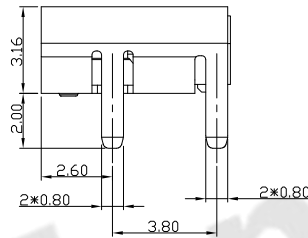
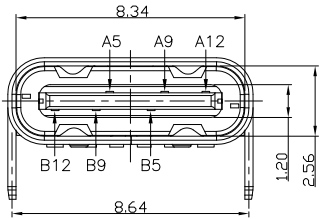
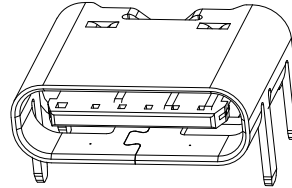
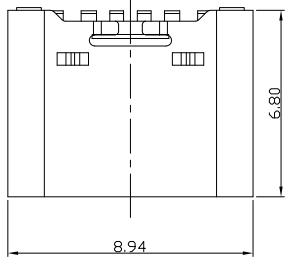


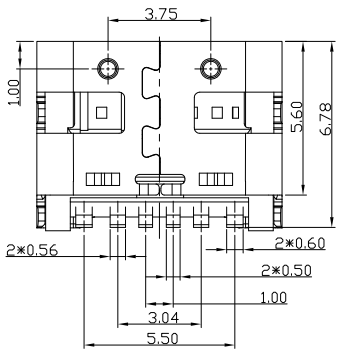


RoHS  
Compliant  
2002/95/EC

REV.	ECN.	NO.	APPD.



RECOMMENDED P.C.B. LAYOUT  
TOLERANCE UNSPECIFIED ±0.05mm



A5	CC1	B12	GND
A9	VBUS	B9	VBUS
A12	GND	B5	CC2
PIN	SIGNAL NAME	PIN	SIGNAL NAME

NOTES:

- ELECTRICAL:
  - CURRENT RATING: 5AMP MAX;
  - INSULATION RESISTANCE: 100MΩ MIN;
  - CONTACT RESISTANCE: 40mΩ MAX;
  - WITHSTANDING VOLTAGE: 100V AC;
  - OPERATING TEMPERATURE: -30°C TO +85°C.
- Mechanical:
  - Mating Force: 5N~20N
  - Unmating Force: 8N~20N
  - Durability: 10,000 cycles
- DIMENSIONS MARKED "▼"  
TO BE CHECKED BY Q.C & IPQC.

4.PART NO.

USCF-06\*N-4BVS206  
 W:WHITE  
 B:BLACK  
 1:Au 1U\*  
 2:Au 3U\*  
 5:Au 15u\*  
 6:Au 30U\*  
 1:PB  
 2:PA6T  
 3:PA9T  
 4:LCP

5				X. ±0.35	X.' ±2°	UNITS	mm
4				.X ±0.30	.X' ±1°	MAT'L	
3	SHELL	STAINLESS STEEL	1	.XX ±0.20	.XX' ±0.5°	SEE NOTE	
2	CONTACT	COPPER ALLOY	6	.XXX ±0.10	.XXX°	SEE NOTE	
1	HOUSING	LCP+30%GF	1	UL94V-0		Q'TY	
NO	PARTS	MATERIAL	QTY	FINISHING			

THESE DRAWINGS AND SPECIFICATIONS ARE THE PROPERTY OF ACCURATE INNOVATECH INC AND SHALL NOT BE REPRODUCED, COPIED OR USED IN ANY MANNER WITHOUT THE PRIOR WRITTEN CONSENT OF ACCURATE INNOVATECH INC

<b>东莞市腾兴电子有限公司</b>			
TITLE: USB C F TYPE 单排SMT 6PIN L=6.5 四脚插板		PART NO.: USCF-06XN-4BVS206	
DR: Ricky 2017/11/17		DWG NO.: AII-VS206	
CHKD: Ricky 2017/11/17		SCALE	SHEET
APPD:		1:1	1/1
		REV.	B
		CUSTOMER DRAWING	