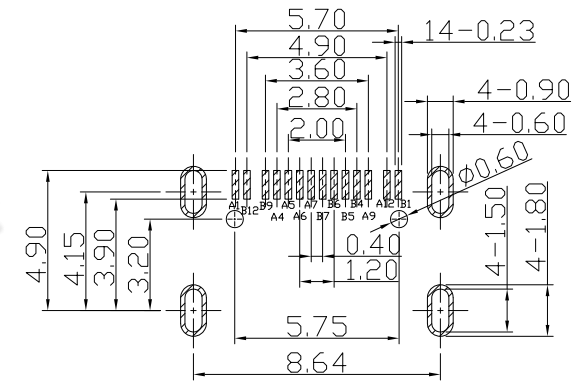
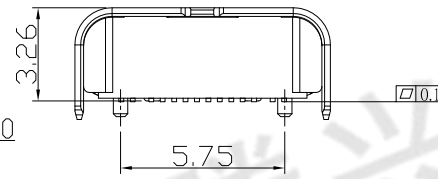
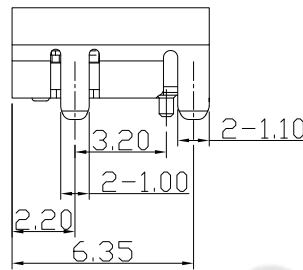
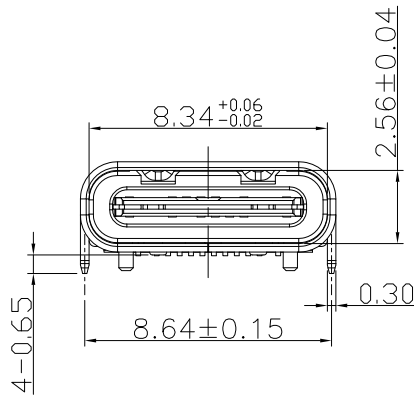
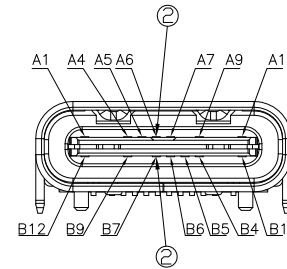
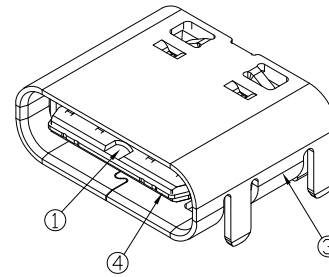
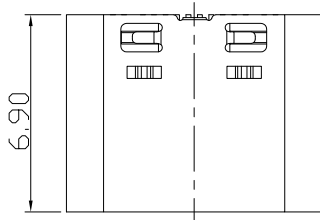




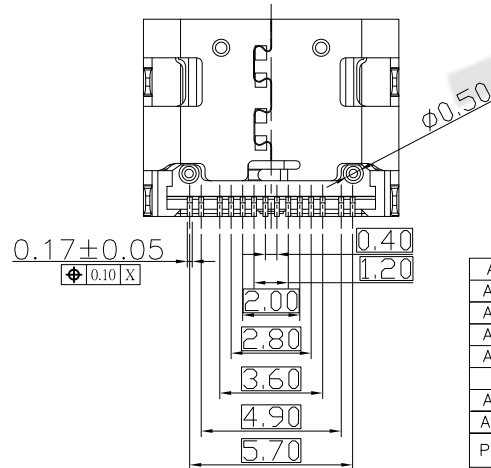
RoHS
Compliant
2002/95/EC

Halogen Free

REV	LTR	DESCRIPTION	DATE	REVISER	APPD



RECOMMENDED PCB LAYOUT



A1	GND	B12	GND
A4	VBUS	B9	VBUS
A5	CC1	B7	DN2
A6	DP1	B6	DP2
A7	DN1	B5	CC2
A9	VBUS	B4	VBUS
A12	GND	B1	GND
PIN	SIGNAL NAME	PIN	SIGNAL NAME

NOTES:

1.ELECTRICAL:

- CURRENT RATING: 3AMP MAX;
- INSULATION RESISTANCE: 100MΩ MIN 250V DC;
- CONTACT RESISTANCE: INITIAL 40mΩ MAX; AFTER 50mΩ MAX;
- WITHSTANDING VOLTAGE: 100V AC MIN;
- OPERATING TEMPERATURE:-40°C TO +80°C.

2.Mechanical:

- Mating Force: 5N~20N MAX.
 - Unmating Force: 8N~20N(INITIAL) 6N~20N(AFTER 10000 CYCLES) MIN.
 - Durability: 10,000 CYCLES.;
- 3.DIMENSIONS MARKED "▼"
TO BE CHECKED BY Q.C & IPQC.

4.PART NO.

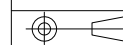
USCF-14*N-4BVJ40

1Au 1U*
2Au 3U*
5Au 15U*
6Au 30U*
1PBT
2PA6T
3PA9T
4LCP

Bill of materials:

NO	PARTS	MATERIAL	QTY	FINISHING	X.	X.* ±5'	UNITS
4	MID PLATE	STAINLESS STEEL	1		X. ±0.38	X.* ±5'	mm
3	SHELL	STAINLESS STEEL	1	PLATED NICKEL	.X ±0.30	.X' ±3'	MAT'L
2	TERMINAL	COPPER ALLOY	14	PLATED GOLD	.XX ±0.20	.XX' ±1'	SEE NOTE
1	INSULATOR	LCP+30%GF	1	UL94V-0	.XXX ±0.10	.XXX'	FINISH
							SEE NOTE
							Q'TY

THESE DRAWINGS AND SPECIFICATIONS ARE THE PROPERTY OF ACCURATE INNO TECH INC. AND SHALL NOT BE REPRODUCED, COPIED OR USED IN ANY MANNER WITHOUT THE PRIOR WRITTEN CONSENT OF ACCURATE INNO TECH INC.



东莞市腾兴电子有限公司

TITLE: USB TYPE CF 2.0 单排14PIN 板上式(带柱) 板上3.26mm	PART NO.: USCF-14XN-4BVJ40
DR: Ricky 2018/1/24	DWG NO.: AII-VJ40
CHKD: Ricky 2018/1/24	SCALE SHEET REV. CUSTOMER DRAWING
APPD:	1:1 1/1 B