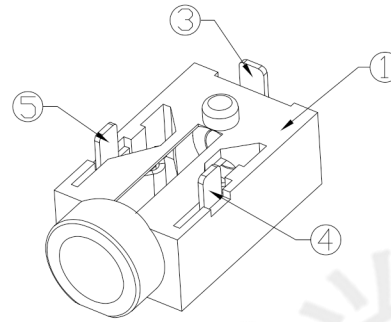
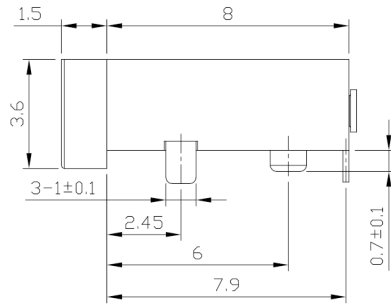
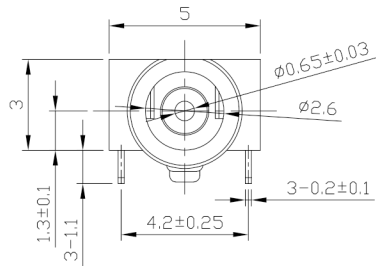




RoHS  
Compliant  
2002/95/EC

REV.	ECN.	NO.	APPD.

### DIMENSIONS



### MODEL CODE:

DCB0-0055B- D A 9T BK S 0 4

(1) (2) (3)(4)(5) (6) (7)(8) (9)

(1):Series type:DIP DC POWER JACK.

(2):Series No.

(3):Schematic option: D

(4):Center pin diameter:

A=0.65

(5):Material of housing:

9T=PA9T

(6):Housing color:

BK=Black , 9C=White(0419)

(7):Terminal plating

S=Silver(Ag)

(8):Special option:

0=No special option

(9):Packing mode:

1=Reel packing

4=Bag packing

### SPECIFICATION:

1.Rating : DC 12V 1A;

2.Contact resistance:  $\leq 30m\Omega$ ;

3.Insulation resistance:  $\geq 100M\Omega$  (DC500V);

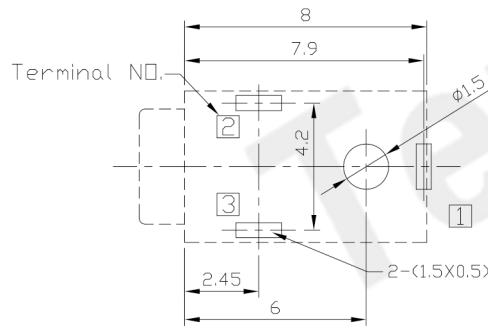
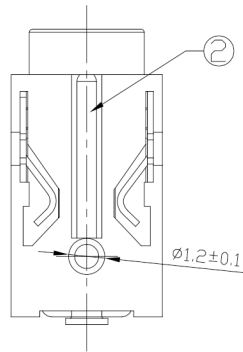
4.Withstand voltage: 500VAC ;

5.Insertion and extraction force: 3-30N;

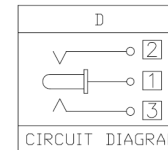
6.life test: 5,000 cycles;

7. Operation temperature range:-20°C~70°C;

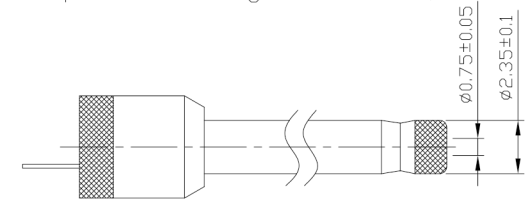
8.Preservative temperature range:-40°C~85°C;



P.C.B Layout  
(Top view)



CIRCUIT DIAGRAM



DC MATE PLUG

○: ITEM NO. □: TERMINAL NO.

NO.	PARTS	MATERIAL	Q'TY	FINISHING	TOLERANCE	ANGLES	UNITS	mm	东莞市腾兴电子有限公司			
5	Tip spring	3	Beryllium bronze	1	Silver plating	±0.3	±2°	MAT'L	东莞市腾兴电子有限公司 TITLE: DIP DC POWER JACK PART NO.: DCB0-0055B DR: Ricky 2019/04/30 DWG NO.: AB0-0055B CHKD: Ricky 2019/04/30 APPD:			
4	Tip spring	2	Beryllium bronze	1	Silver plating			SEE NOTE				
3	Center pin terminal	1	Brass	1	Silver plating			FINISH				
2	Center pin	1	Brass	1	Silver plating			SEE NOTE				
1	Housing	1	PA9T	1				Q'TY				
					THESE DRAWINGS AND SPECIFICATIONS ARE THE PROPERTY OF ACCURATE INNO TECH INC AND SHALL NOT BE REPRODUCED, COPIED OR USED IN ANY MANNER WITHOUT THE PRIOR WRITTEN CONSENT OF ACCURATE INNO TECH INC.				SCALE SHEET REV. CUSTOMER DRAWING 1:1 1/1 A			