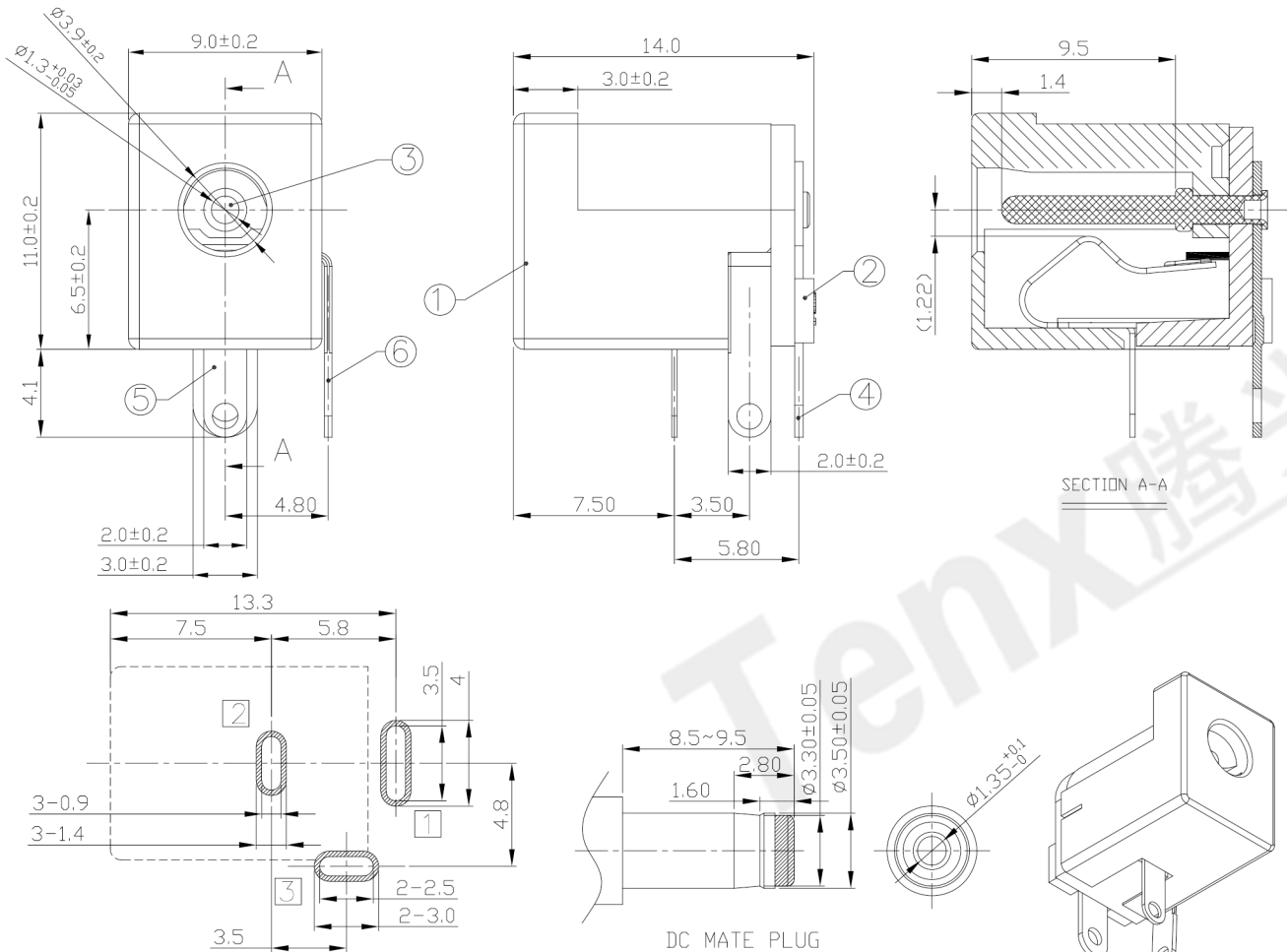




**RoHS Compliant**  
2002/95/EC

**DIMENSIONS**



RECOMMENDED P.C.B. LAYOUT  
UNSPECIFIED TOLERANCE: ±0.05  
(TOP VIEW)

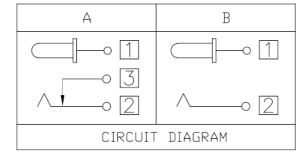
○: ITEM NO. □: TERMINAL NO.

MODEL CODE:  
DCB0-0005C- A E PB BK I 0 4  
(1) (2) (3)(4) (5) (6) (7)(8) (9)  
(1):Series type:DIP DC POWER JACK.  
(2):Series No.  
(3):Schematic option: A , B  
(4):Center pin diameter: E=φ1.3  
(5):Material of housing:  
PB=PBT (Standard)  
9T=PA9T  
66=PA66  
(6):Housing color:  
BK=Black (Standard)  
4H=Yellow(0039=XH-1029)=PBT4815  
4N=Yellow(0080=PBT4815)  
6C=Blue(XH-1191=PBT4815)  
8E=Gray(0259=PBT4815)  
(7):Terminal plating  
T=Tin(Sn) (Standard)  
(8):Special option:

NO.	Housing		Cover		2# terminal Material
	Material	Color	Material	Color	
0	PBT Halogen	Black	PA66 Halogen	Black	Stainless steel
	PBT Halogen	Yellow	PA66 Halogen	Black	
1	PBT Halogen	Blue	PBT Halogen	Blue	

(9):Packing mode:  
4=Bag packing

Specification:  
1.Rating : DC 20V 4A.  
2.Contact resistance : ≤30mΩ  
After test:≤100mΩ  
3.Insulation resistance : ≥100MΩ (500VDC).  
After test:≥50MΩ  
4.Withstanding voltage: 500VAC .  
5.Insertion and extraction force: 3N~30N.  
6.life test: 5000cycles min.  
7.Operation temperature range:-20℃~70℃.  
8.Preservative temperature range:-40℃~85℃.



NO.	PARTS	MATERIAL	Q'TY	FINISHING
⑥	Shunt terminal ③	Brass t=0.35	1	Tin plating
⑤	Tip spring ②	Stainless steel t=0.25	1	Tin plating
④	Center pin terminal ①	Brass t=0.4	1	Tin plating
③	Center pin	Brass	1	CuSn plating
②	Cover	Thermoplastic	1	See P/N ordering info
①	Housing	Thermoplastic	1	See P/N ordering info

TOLERANCE	ANGLES	UNITS	mm
±0.3	±2°	MAT'L	
		SEE NOTE	
		FINISH	
		SEE NOTE	
		Q'TY	

THESE DRAWINGS AND SPECIFICATIONS ARE THE PROPERTY OF ACCURATE INNO TECH INC AND SHALL NOT BE REPRODUCED, COPIED OR USED IN ANY MANNER WITHOUT THE PRIOR WRITTEN CONSENT OF ACCURATE INNO TECH INC.

**东莞市腾兴电子有限公司**

TITLE:	DIP DC POWER JACK	PART NO.:	DCB0-0005C
DR:	Ricky 2019/03/05	DWG NO.:	AB0-0005C
CHKD:	Ricky 2019/03/05	SCALE	1:1
APPD:		SHEET	1/1
		REV.	A
		CUSTOMER DRAWING	