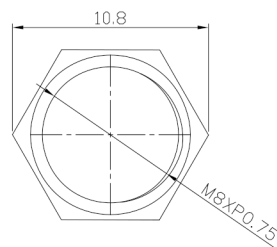
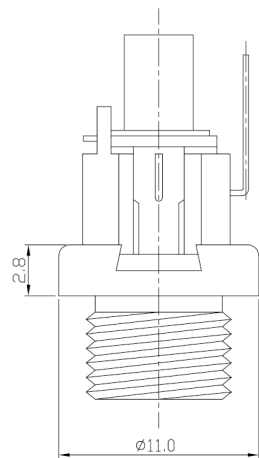




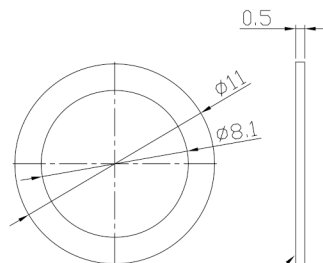
**RoHS Compliant**  
2002/95/EC

REV.	ECN.	NO.	APPD.

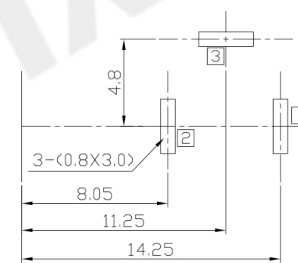
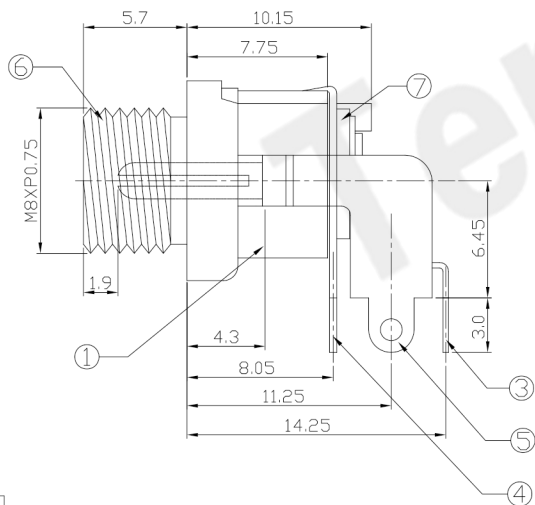
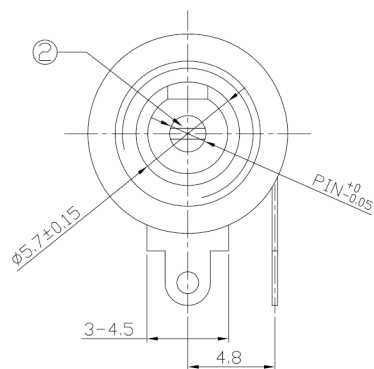
### DIMENSIONS



Nut



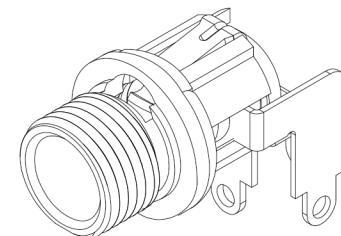
Washer



RECOMMENDED P.C.B. LAYOUT  
UNSPECIFIED TOLERANCE:±0.05  
(COPPER-SIDED VIEW)

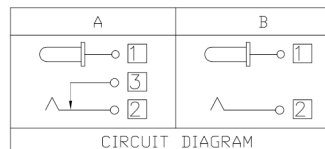
### MODEL CODE:

- DCB0-0124M- A □ PB BK S 0 4  
 (1) (2) (3)(4) (5) (6) (7)(8) (9)  
 (1):Series type:DIP DC POWER JACK.  
 (2):Series No.  
 (3):Schematic option: A , B  
 (4):Center pin diameter:  
 H=φ2.0 , J=φ2.5  
 (5):Material of housing:  
 PB=PBT (Standard)  
 (6):Housing color:  
 BK=Black  
 (7):Terminal plating  
 S=Silver(Ag)  
 (8):Special option:  
 0=No special option  
 D=Do not spare parts  
 (9):Packing mode:  
 4=Bag packing



### SPECIFICATION:

- Rating : DC 30V 3A;
- Contact resistance: ≤30mΩ;  
After test:≤50mΩ
- Insulation resistance: ≥100MΩ (DC500V);  
After test:≥50MΩ
- Withstand voltage: 500VAC ;
- Insertion and extraction force: 3-30N;
- life test: 5,000 cycles;
- Operation temperature range:-20°C~70°C;
- Preservative temperature range:-40°C~85°C;



DC MATE PLUG

Model No.	H	J
CENTER PIN	φ2.0	φ2.5

○: ITEM NO. □: TERMINAL NO.

NO.	PARTS	MATERIAL	Q'TY	FINISHING
9	Washer-2	Brass	1	Ni40u*Min. Plating
8	Nut	Brass	1	Ni40u*Min. Plating
7	Washer-1	Bakelite	2	
6	Bushing	Brass	1	CuSn10u*Min. Plating
5	Shunt Terminal 3	Phosphor Bronze	1	
4	Tip Spring 2	Phosphor Bronze	1	Ag:8u*Min. Plating
3	Center pin contact 1	Brass	1	
2	Center pin	Brass	1	CuSn10u*Min. Plating
1	Housing	PBT UL94V-0	1	Black

THESE DRAWINGS AND SPECIFICATIONS ARE THE PROPERTY OF ACCURATE INNOVATECH INC AND SHALL NOT BE REPRODUCED, COPIED OR USED IN ANY MANNER WITHOUT THE PRIOR WRITTEN CONSENT OF ACCURATE INNOVATECH INC.

UNITS	mm
TOLERANCE	
ANGLES	
MAT'L	
SEE NOTE	
FINISH	
SEE NOTE	
Q'TY	

## 东莞市腾兴电子有限公司

TITLE:	DIP DC POWER JACK	PART NO.:	DCB0-0124M
DR:	Ricky 2019/05/03	DWG NO.:	AB0-0124M
CHKD:	Ricky 2019/05/03	SCALE	SHEET
APPD:		1:1	1/1
		REV.	CUSTOMER DRAWING
		A	