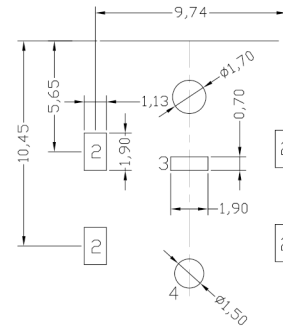
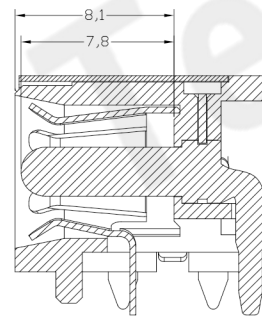
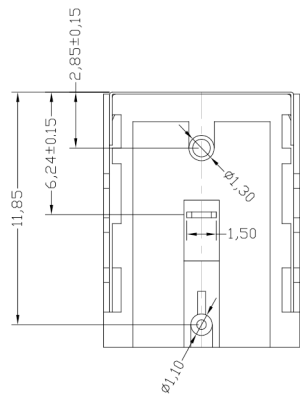
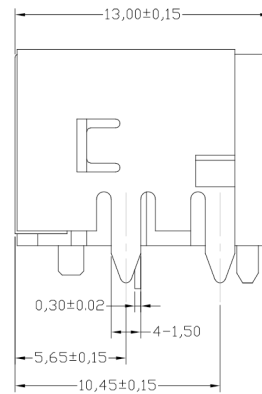
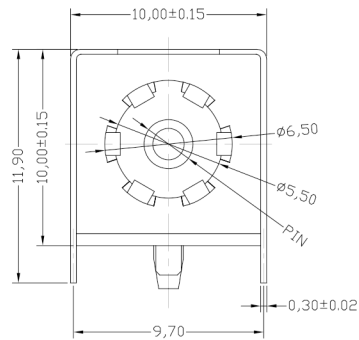




**RoHS Compliant**  
2002/95/EC

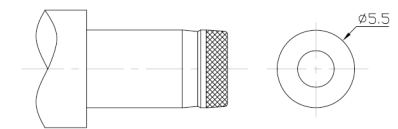
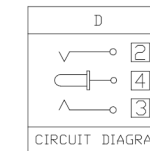
REV.	ECN.	NO.	APPD.

### DIMENSIONS



MODEL CODE:  
DCS0-02000- D □ 9T BK S 0 3  
(1) (2) (3)<4 (5) (6) (7)<8 (9)  
(1):Series type:DIP DC POWER JACK.  
(2):Series No.  
(3):Schematic option: D  
(4):Center pin diameter:  
H=φ2.0 , J=φ2.5  
(5):Material of housing:  
9T=PA9T  
(6):Housing color:  
BK=Black  
(7):Terminal plating  
S=Silver(Ag)  
(8):Special option:  
0=No special option  
(9):Packing mode:  
3=Plastic box packing

Specification:  
1.Rating :DC 50V 3A.  
2.Contact resistance :≤100mΩ  
3.Insulation resistance :≥100MΩ (DC250V).  
4.Withstanding voltage :500VAC .  
5.Insertion and extraction force: 3~30N.  
6.life test: 5000cycles min.  
7.□operation temperature range:-25°C~85°C



DC MATE PLUG

Model No.	H	J
CENTER PIN	φ2.0	φ2.5

P.C.B LAYOUT  
TOP VIEW

### Bill of materials:

NO.	PARTS	MATERIAL	Q'TY	FINISHING	TOLERANCE	ANGLES	UNITS	mm
5	SPACER	9T NYLON (BLACK)	1		.X ± 0.35	X°,±5°	MAT'L	
4	BERRY PIN	COPPER ALLOY	1	Ag-Plating	.XX ± 0.25	.X°±3°	SEE NOTE	
3	CCAW	COPPER ALLOY	1	Ag-Plating	.XXX ± 0.15		FINISH	
2	FOOT COVERLET	COPPER ALLOY	1	Ag-Plating			SEE NOTE	
1	HOUSING	9T NYLON (BLACK)	1				Q'TY	

THESE DRAWINGS AND SPECIFICATIONS ARE THE PROPERTY OF ACCURATE INNO TECH INC AND SHALL NOT BE REPRODUCED, COPIED OR USED IN ANY MANNER WITHOUT THE PRIOR WRITTEN CONSENT OF ACCURATE INNO TECH INC.

**东莞市腾兴电子有限公司**

TITLE: <b>DIP DC POWER JACK</b>	PART NO.: DCS0-02000
DR: <i>Ricky</i> 2019/03/22	DWG NO.: ASS-02000
CHKD: <i>Ricky</i> 2019/03/22	SCALE SHEET REV. CUSTOMER 1:1 1/1 A DRAWING
APPD:	