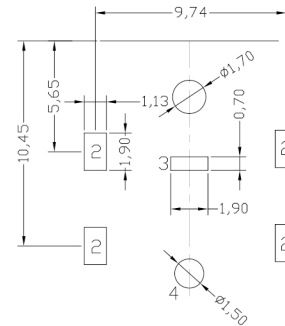
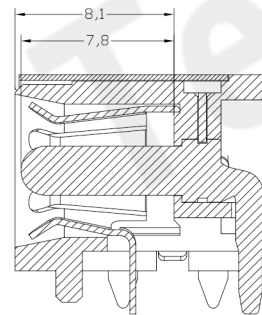
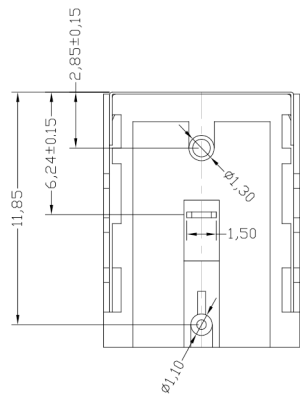
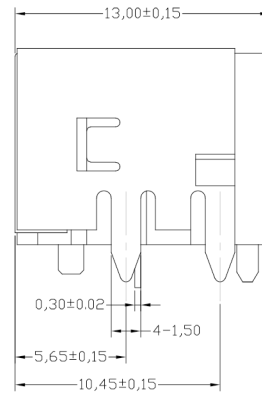
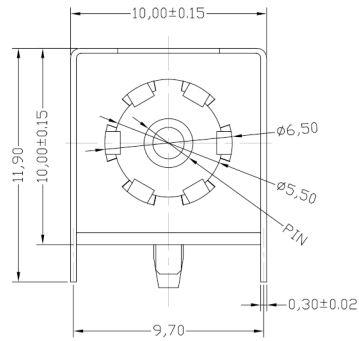




**RoHS Compliant**  
2002/95/EC

REV.	ECN. NO.	APPD.

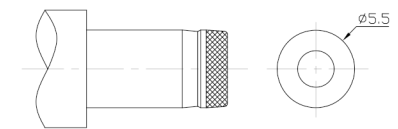
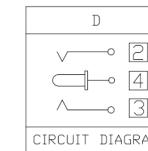
### DIMENSIONS



P.C.B LAYOUT  
TOP VIEW

MODEL CODE:  
DCS0-02000- D □ 9T BK S 0 3  
(1) (2) (3)<4> (5) (6) (7)<8> (9)  
(1):Series type:DIP DC POWER JACK.  
(2):Series No.  
(3):Schematic option: D  
(4):Center pin diameter:  
H=φ2.0 , J=φ2.5  
(5):Material of housing:  
9T=PA9T  
(6):Housing color:  
BK=Black  
(7):Terminal plating  
S=Silver(Ag)  
(8):Special option:  
0=No special option  
(9):Packing mode:  
3=Plastic box packing

Specification:  
1.Rating :DC 50V 3A.  
2.Contact resistance :≤100mΩ  
3.Insulation resistance :≥100MΩ (DC250V).  
4.Withstanding voltage : 500VAC .  
5.Insertion and extraction force: 3~30N.  
6.life test: 5000cycles min.  
7.□operation temperature range:-25°C~85°C



DC MATE PLUG

Model No.	H	J
CENTER PIN	φ2.0	φ2.5

### Bill of materials:

NO.	PARTS	MATERIAL	Q'TY	FINISHING
5	SPACER	9T NYLON (BLACK)	1	
4	BERRY PIN	COPPER ALLOY	1	Ag-Plating
3	CCAW	COPPER ALLOY	1	Ag-Plating
2	FOOT COVERLET	COPPER ALLOY	1	Ag-Plating
1	HOUSING	9T NYLON (BLACK)	1	

TOLERANCE	ANGLES	UNITS	mm
.X ± 0.35	X°,±5°	MAT'L	
.XX ± 0.25	.X°±3°	SEE NOTE	
.XXX ± 0.15		FINISH	
		SEE NOTE	
		Q'TY	

THESE DRAWINGS AND SPECIFICATIONS ARE THE PROPERTY OF ACCURATE INNOVATECH INC AND SHALL NOT BE REPRODUCED, COPIED OR USED IN ANY MANNER WITHOUT THE PRIOR WRITTEN CONSENT OF ACCURATE INNOVATECH INC.

### 东莞市腾兴电子有限公司

TITLE: DIP DC POWER JACK	PART NO.: DCS0-02000
DR: Ricky 2019/03/22	DWG NO.: ASS-02000
CHKD: Ricky 2019/03/22	SCALE SHEET REV. CUSTOMER 1:1 1/1 A DRAWING
APPD:	