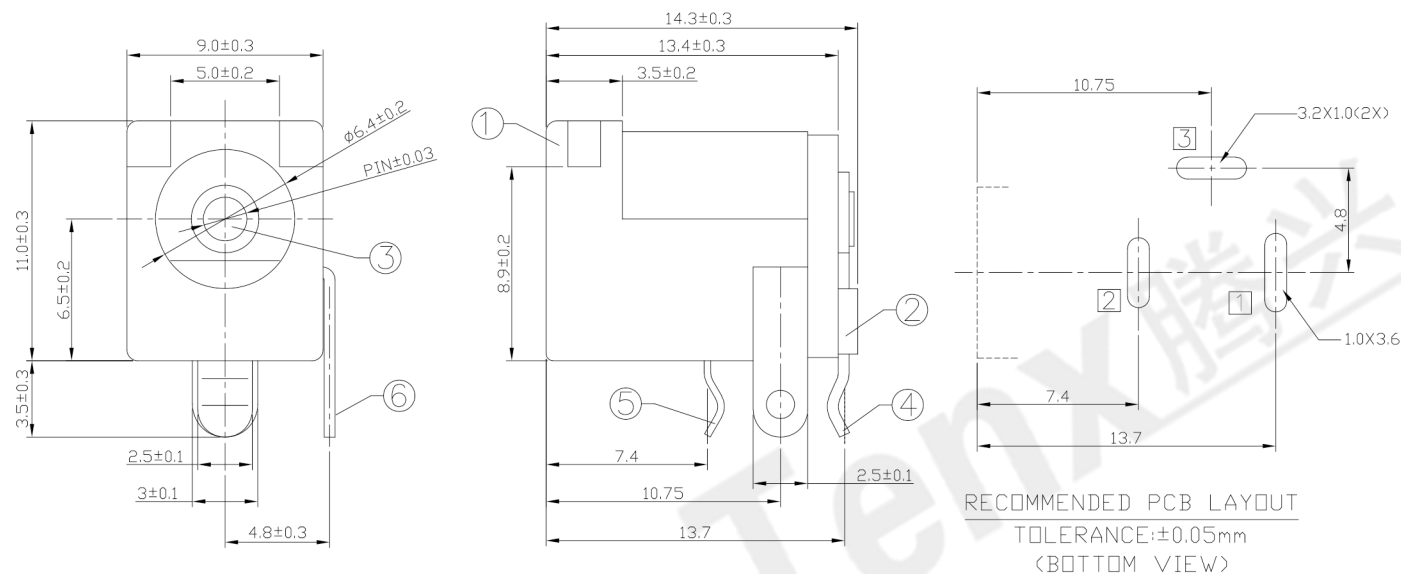




RoHS
Compliant
2002/95/EC

REV.	ECN.	NO.	APPD.

DIMENSIONS



MODEL CODE:

DCB0-0005G- A □ PB BK I 0 4

(1) (2) (3)(4) (5) (6) (7)(8) (9)

(1):Series type:DIP DC POWER JACK.

(2):Series No.

(3):Schematic option: A , B

(4):Center pin diameter:

H= $\phi 2.0$, I= $\phi 2.35$, J= $\phi 2.5$

(5):Material of housing:

PB=PBT (Standard)

(6):Housing color:

BK=Black , 2R=Red(0046) , 4H=Yellow(0039)

(7):Terminal plating

T=Tin(Sn)

(8):Special option:

0=No special option

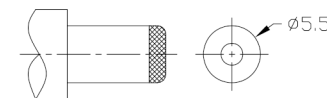
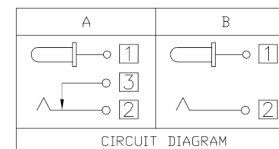
(9):Packing mode:

4=Bag packing

Specification:

- 1.Rating : DC 20V/2.5A.
- 2.Contact resistance: $\leq 30m\Omega$
After test: $\leq 50m\Omega$
- 3.Insulation resistance: $\geq 100M\Omega$ (500VDC).
After test: $\geq 50M\Omega$
- 4.Withstanding voltage: 500VAC.
- 5.Insertion and extraction force: 3N-30N.
- 6.Life test: 5000 cycles min.
- 7.Operation temperature range: $-20^{\circ}C \sim 70^{\circ}C$.
- 8.Preservative temperature range: $-40^{\circ}C \sim 85^{\circ}C$.

RECOMMENDED PCB LAYOUT
TOLERANCE: $\pm 0.05mm$
(BOTTOM VIEW)



DC MATE PLUG

Model No.	H	I	J
CENTER PIN	$\phi 2.0$	$\phi 2.35$	$\phi 2.5$

○: ITEM NO. □: TERMINAL NO.

NO.	PARTS	MATERIAL	Q'TY	FINISHING	TOLERANCE	ANGLES	UNITS	mm
⑥	Shunt terminal ③	Brass	1	Tin plating	± 0.3	$\pm 2^{\circ}$	SEE NOTE	mm
⑤	Tip spring ②	Phosphor bronze	1	Tin plating				
④	Center pin terminal ①	Brass	1	Tin plating	SEE NOTE	SEE NOTE	Q'TY	mm
③	Center pin	Brass	1	CuSn plating				
②	Cover	PBT UL94V-0	1	Black	THESE DRAWINGS AND SPECIFICATIONS ARE THE PROPERTY OF ACCURATE INNO TECH INC AND SHALL NOT BE REPRODUCED, COPIED OR USED IN ANY MANNER WITHOUT THE PRIOR WRITTEN CONSENT OF ACCURATE INNO TECH INC.			
①	Housing	PBT UL94V-0	1	Black				

东莞市腾兴电子有限公司

TITLE:	DIP DC POWER JACK	PART NO.:	DCB0-0005G
DR:	Ricky 2019/03/06	DWG NO.:	AB0-0005G
CHKD:	Ricky 2019/03/06	SCALE	1:1
APPD:		SHEET	1/1
		REV.	A
		CUSTOMER DRAWING	