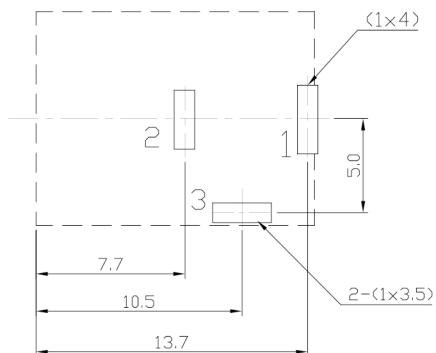




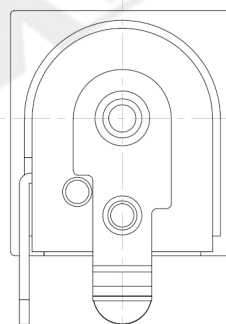
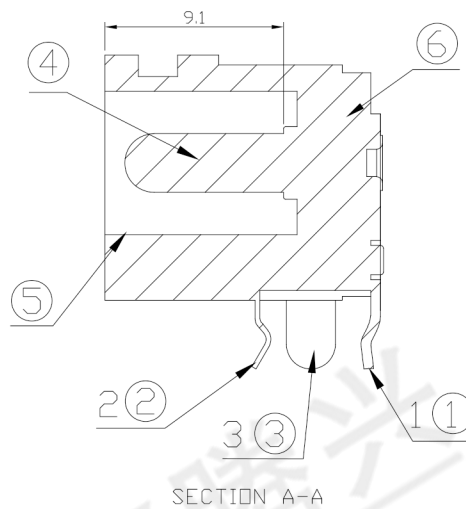
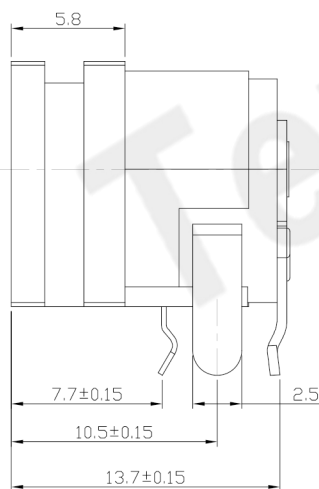
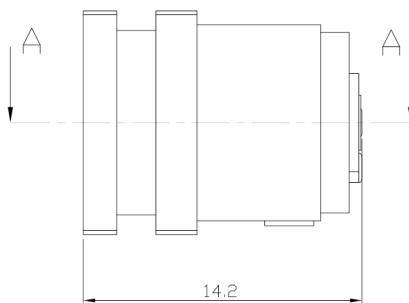
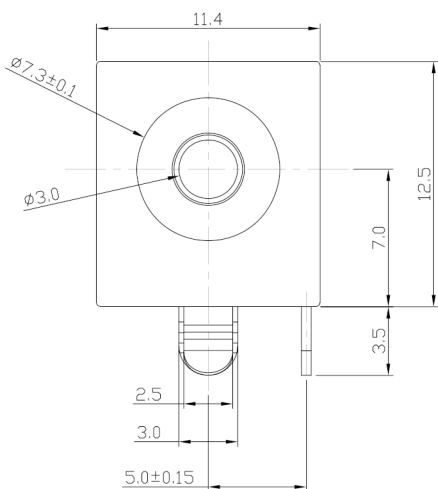
RoHS
Compliant
2002/95/EC

REV.	ECN.	NO.	APPD.

DIMENSIONS



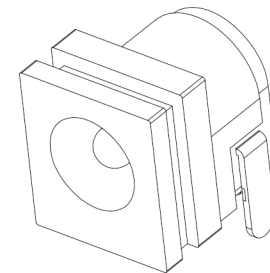
PCB LAYOUT
TOP VIEW



MODEL CODE:

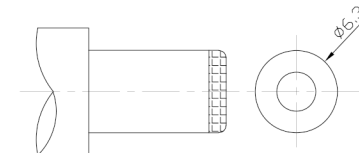
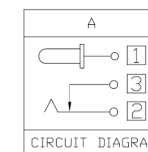
DCS0-02070- A K PB BK S 0 4

- (1) (2) (3)(4)(5) (6) (7)(8) (9)
- (1):Series type:DIP DC POWER JACK.
- (2):Series No.
- (3):Schematic option: A
- (4):Center pin diameter:
K=φ3.0
- (5):Material of housing:
PB=PBT
- (6):Housing color:
BK=Black
- (7):Terminal plating
S=Silver(Ag)
- (8):Special option:
0=No special option
- (9):Packing mode:
4=Bag packing



Specification:

- 1.Rating :DC 24V 5A.
- 2.Contact resistance :≤100mΩ
- 3.Insulation resistance :≥100MΩ (DC250V).
- 4.Withstanding voltage: 500VAC .
- 5.Insertion and extraction force: 3~30N.
- 6.life test: 5000cycles min.
- 7.□operation temperature range:-25°C~85°C



DC MATE PLUG

Model No.	K
CENTER PIN	φ3.0

Bill of materials:

NO.	PARTS	MATERIAL	Q'TY	FINISHING
6	HOUSING	PBT(Black)	1	
5	COVER	PBT(Black)	1	
4	PIN	BRASS	1	Ag-Plated
3	TERMINAL	BRASS	1	Ag-Plated
2	TERMINAL	PHOSPHOR BRONZE	1	Ag-Plated
1	TERMINAL	BRASS	1	Ag-Plated

TOLERANCE	ANGLES	UNITS	mm
.X ± 0.25	X°,±5°	MAT'L	
.XX ± 0.15	.X°±3°	SEE NOTE	
.XXX ± 0.1		FINISH	
		SEE NOTE	
		Q'TY	

THESE DRAWINGS AND SPECIFICATIONS ARE THE PROPERTY OF ACCURATE INNO TECH INC AND SHALL NOT BE REPRODUCED, COPIED OR USED IN ANY MANNER WITHOUT THE PRIOR WRITTEN CONSENT OF ACCURATE INNO TECH INC.

东莞市腾兴电子有限公司

TITLE:	DIP DC POWER JACK	PART NO.:	DCS0-02070
DR:	Ricky 2019/03/22	DWG NO.:	ASS-02070
CHKD:	Ricky 2019/03/22	SCALE	SHEET
APPD:		1:1	1/1
		REV.	A
		CUSTOMER	DRAWING