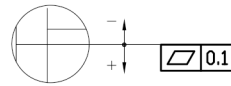
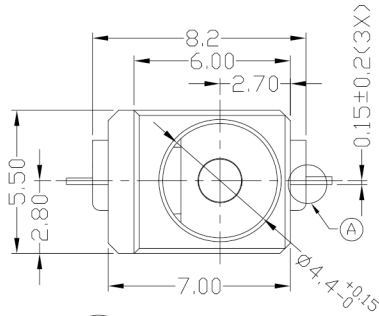
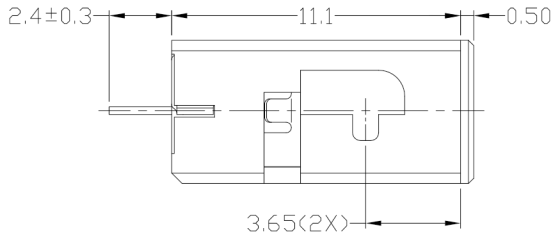




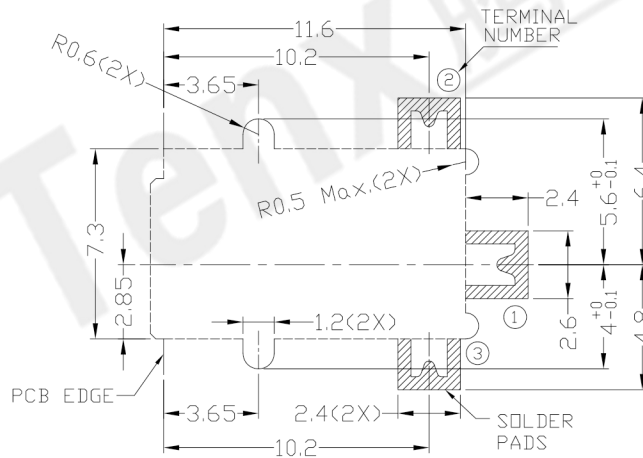
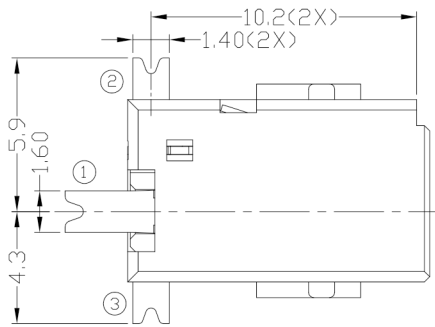
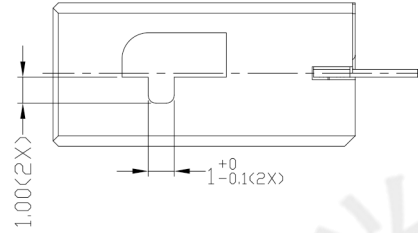
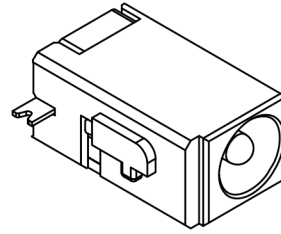
RoHS  
Compliant  
2002/95/EC

Halogen Free

DIMENSIONS



A DETAIL COPLANARITY



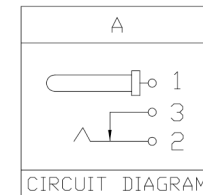
RECOMMENDED P.C.B. LAYOUT  
TOLERANCE:±0.05  
(TOP VIEW)

MODEL CODE:

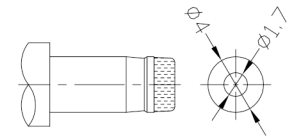
- DCT0-0095DH- A G 10 BK S 0 1  
 (1) (2) (3)(4)(5) (6) (7)(8) (9)  
 (1):Series type:SMD DC POWER JACK.  
 (2):Series No.  
 (3):Schematic option: A  
 (4):Center pin diameter:  
 G=φ1.65mm  
 (5):Material of housing:  
 10=PA10T  
 (6):Housing color:  
 BK=Black  
 (7):Terminal plating:  
 S=Silver(Ag)  
 (8):Special option:  
 0=No special option  
 (9):Packing mode:  
 1=Reel packing

Specification:

- 1.Rating : 5A/16V DC Max.
- 2.Contact resistance: ≤30mΩ  
After test:≤60mΩ
- 3.Insulation resistance: ≥100MΩ (DC500V).  
After test:≥50MΩ
- 4.Withstanding voltage: 500VAC.
- 5.Insertion and extraction force: 0.3~3Kgs.
- 6.Life test: 5,000cycles min.
- 7.Operation temperature range:-25℃~85℃.



MODEL NO.	G
CENTER PIN	φ1.65mm



DC MATE PLUG

Bill of materials:

NO.	PARTS	MATERIAL	Q'TY	FINISHING	TOLERANCE	ANGLES	UNITS	mm
4	TERMINAL 1	BRASS	1	SILVER PLATED	±0.3	±2°	MAT'L	
3	TERMINAL 2	COPPER ALLOY	1	SILVER PLATED			SEE NOTE	
2	TERMINAL 3	BRASS	1	SILVER PLATED			FINISH	
1	HOUSING	PA10T	1	UL94V-0			SEE NOTE	
							Q'TY	

THESE DRAWINGS AND SPECIFICATIONS ARE THE PROPERTY OF ACCURATE INNOVATECH INC AND SHALL NOT BE REPRODUCED, COPIED OR USED IN ANY MANNER WITHOUT THE PRIOR WRITTEN CONSENT OF ACCURATE INNOVATECH INC.

东莞市腾兴电子有限公司

TITLE:	SMD DC POWER JACK	PART NO.:	DCT0-0095DH
DR:	Ricky 2018/10/08	DWG NO.:	AT0-0095DH
CHKD:	Ricky 2018/10/08	SCALE	1:1
APPD:		SHEET	1/1
		REV.	A
		CUSTOMER DRAWING	