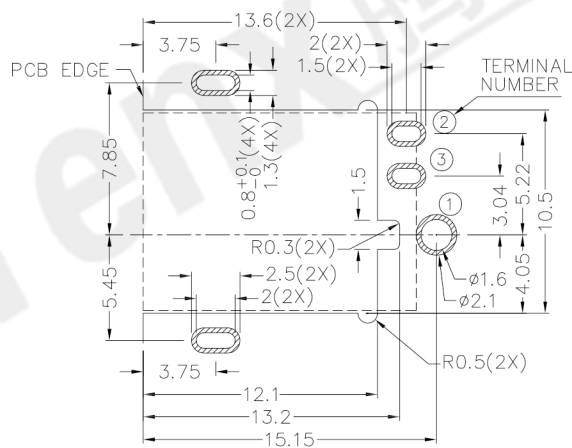
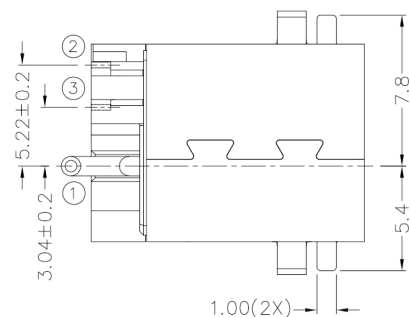
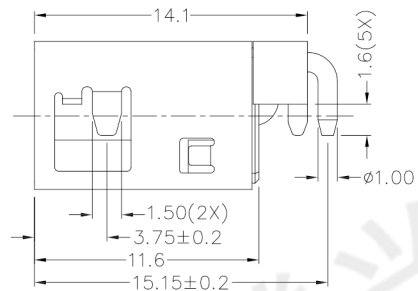
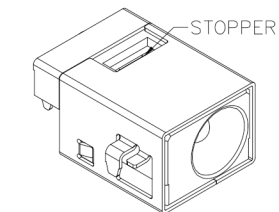
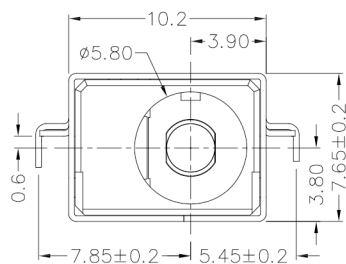
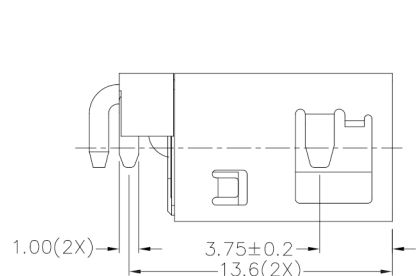




RoHS
Compliant
2002/95/EC

Halogen Free

DIMENSIONS

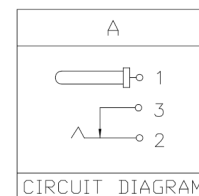


RECOMMENDED P.C.B. LAYOUT
TOLERANCE:±0.05
(TOP VIEW)

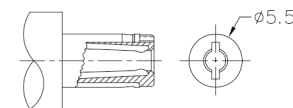
MODEL CODE:
DCT0-107DHS- A J 10 BK S 0 1
(1) (2) (3)(4)(5) (6) (7)(8) (9)
(1):Series type:SMD DC POWER JACK.
(2):Series No.
(3):Schematic option: A
(4):Center pin diameter:
J=φ2.5mm
(5):Material of housing:
10=PA10T
(6):Housing color:
BK=Black
(7):Terminal plating:
S=Silver(Ag)
(8):Special option:
0=No special option
(9):Packing mode:
1=Reel packing

Specification:

- 1.Rating : 5A/16V DC Max.
- 2.Contact resistance : ≤30mΩ
After test:≤60mΩ
- 3.Insulation resistance : ≥100MΩ (DC500V).
After test:≥50MΩ
- 4.Withstanding voltage : 500VAC.
- 5.Insertion and extraction force : 0.3~3Kgs.
- 6.Life test : 5,000cycles min.
- 7.Operation temperature range:-25℃~85℃.



MODEL NO.	J
CENTER PIN	φ2.5mm



DC MATE PLUG

Bill of materials:

NO.	PARTS	MATERIAL	Q'TY	FINISHING
7	TERMINAL 1	BRASS	1	SILVER PLATED
6	TERMINAL 2	COPPER ALLOY	1	SILVER PLATED
5	TERMINAL 3	BRASS	1	SILVER PLATED
4	SHIELD	BRASS	1	NICKEL PLATED
3	SPRING	STAINLESS STEEL	1	
2	STOPPER	C.R.STEEL	1	NICKEL PLATED
1	HOUSING	PA10T	1	UL94V-0

THESE DRAWINGS AND SPECIFICATIONS ARE THE PROPERTY OF ACCURATE INNO TECH INC AND SHALL NOT BE REPRODUCED, COPIED OR USED IN ANY MANNER WITHOUT THE PRIOR WRITTEN CONSENT OF ACCURATE INNO TECH INC.

UNITS	mm
TOLERANCE	±0.3
ANGLES	±2°
MAT'L	SEE NOTE
FINISH	SEE NOTE
Q'TY	

东莞市腾兴电子有限公司

TITLE:	SMD DC POWER JACK	PART NO.:	DCT0-107DHS
DR:	Ricky 2018/10/09	DWG NO.:	AT0-107DHS
CHKD:	Ricky 2018/10/09	SCALE	1:1
APPD:		SHEET	1/1
		REV.	A
		CUSTOMER DRAWING	