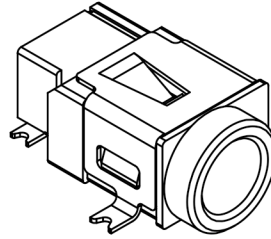




RoHS  
Compliant  
2002/95/EC

Halogen Free

DIMENSIONS



MODEL CODE:

DCT0-00042D- Z Y 10 BK S 0 1

(1) (2) (3)(4)(5) (6) (7)(8) (9)

(1):Series type:SMD DC POWER JACK.

(2):Series No.

(3):Schematic option: Z

(4):Center pin diameter:  
Y=Ø0.8mm

(5):Material of housing:  
10=PA10T

(6):Housing color:  
BK=Black

(7):Terminal plating:  
S=Silver(Ag)

(8):Special option:  
0=No special option

(9):Packing mode:  
1=Reel packing

Specification:

1.Rating : 2.5A/16V DC Max.

2.Contact resistance: ≤30mΩ

After test:≤60mΩ

3.Insulation resistance: ≥100MΩ (DC500V).

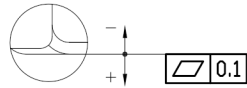
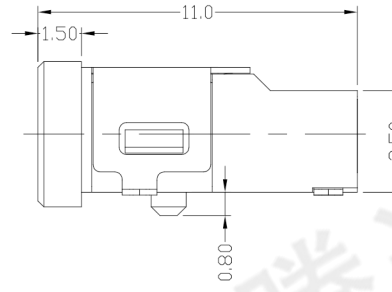
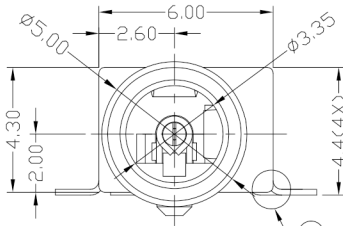
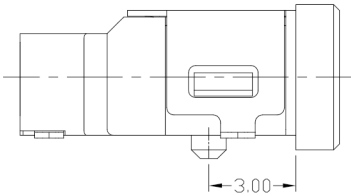
After test:≥50MΩ

4.Withstanding voltage: 500VAC.

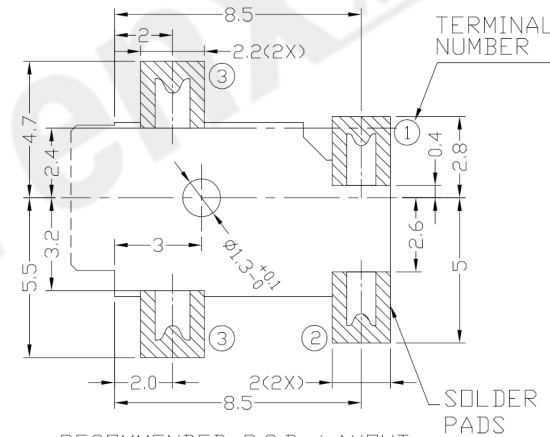
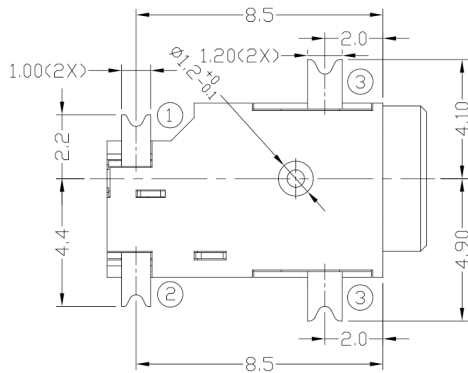
5.Insertion and extraction force: 0.3~3Kgs.

6.Life test: 5,000cycles min.

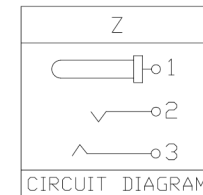
7.Operation temperature range:-25℃~85℃.



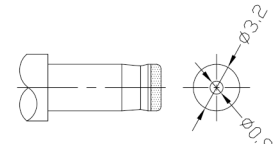
A DETAIL COPLANARITY



RECOMMENDED P.C.B. LAYOUT  
TOLERANCE:±0.05  
(TOP VIEW)



MODEL NO.	Y
CENTER PIN	Ø0.8mm



DC MATE PLUG

Bill of materials:

NO.	PARTS	MATERIAL	Q'TY	FINISHING	TOLERANCE	ANGLES	UNITS	mm
4	TERMINAL 1	BRASS	1	SILVER PLATED	±0.3	±2°	MAT'L	
3	TERMINAL 2	COPPER ALLOY	1	SILVER PLATED			SEE NOTE	
2	TERMINAL 3	COPPER ALLOY	1	SILVER PLATED			FINISH	
1	HOUSING	PA10T	1	UL94V-0			SEE NOTE	
							Q'TY	

THESE DRAWINGS AND SPECIFICATIONS ARE THE PROPERTY OF ACCURATE INNO TECH INC AND SHALL NOT BE REPRODUCED, COPIED OR USED IN ANY MANNER WITHOUT THE PRIOR WRITTEN CONSENT OF ACCURATE INNO TECH INC.

东莞市腾兴电子有限公司

TITLE: SMD DC POWER JACK PART NO.: DCT0-00042D

DR: Ricky 2018/10/01 DWG NO.: AT0-00042D

CHKD: Ricky 2018/10/01	SCALE	SHEET	REV.	CUSTOMER
APPD:	1:1	1/1	A	DRAWING