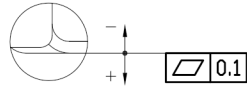
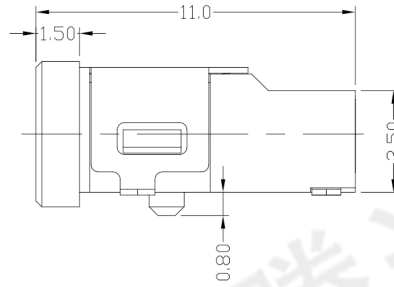
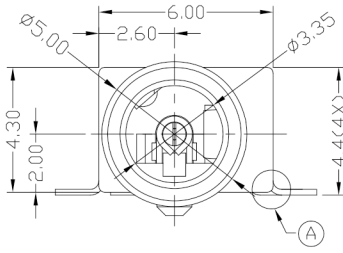
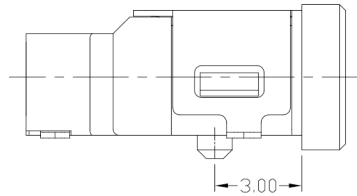




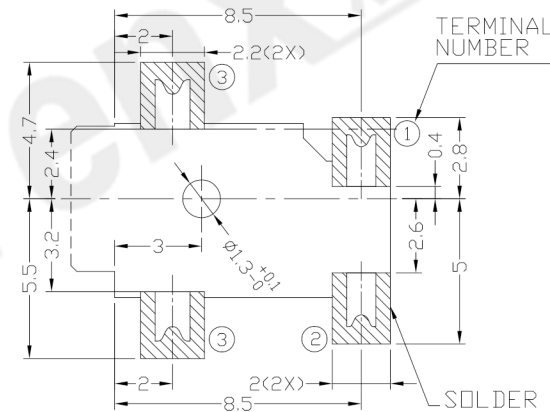
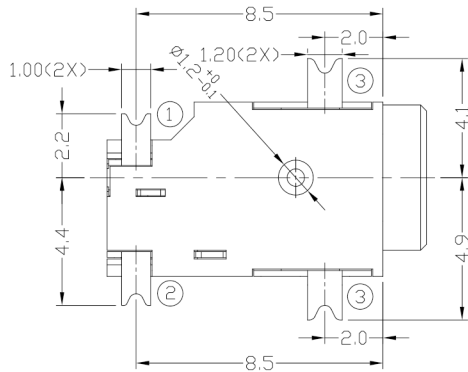
RoHS
Compliant
2002/95/EC

Halogen Free

DIMENSIONS



A DETAIL COPLANARITY



RECOMMENDED P.C.B. LAYOUT
TOLERANCE:±0.05
(TOP VIEW)

MODEL CODE:

DCT0-00043D- Z Y 10 BK S 0 1

(1) (2) (3)(4)(5) (6) (7)(8) (9)

(1):Series type:SMD DC POWER JACK.

(2):Series No.

(3):Schematic option: Z

(4):Center pin diameter:
Y=∅0.8mm

(5):Material of housing:
10=PA10T

(6):Housing color:
BK=Black

(7):Terminal plating:
S=Silver(Ag)

(8):Special option:
0=No special option

(9):Packing mode:
1=Reel packing

Specification:

1.Rating : 2.5A/16V DC Max.

2.Contact resistance: ≤30mΩ

After test:≤60mΩ

3.Insulation resistance: ≥100MΩ (DC500V).

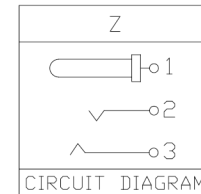
After test:≥50MΩ

4.Withstanding voltage: 500VAC.

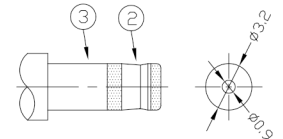
5.Insertion and extraction force: 0.3~3Kgs.

6.Life test: 5,000cycles min.

7.Operation temperature range:-25℃~85℃.



MODEL NO.	Y
CENTER PIN	∅0.8mm



DC MATE PLUG

Bill of materials:

NO.	PARTS	MATERIAL	Q'TY	FINISHING	TOLERANCE	ANGLES	UNITS
4	TERMINAL 1	BRASS	1	SILVER PLATED	±0.3	±2°	mm
3	TERMINAL 2	COPPER ALLOY	1	SILVER PLATED			
2	TERMINAL 3	COPPER ALLOY	1	SILVER PLATED			
1	HOUSING	PA10T	1	UL94V-0			

THESE DRAWINGS AND SPECIFICATIONS ARE THE PROPERTY OF ACCURATE INNO TECH INC AND SHALL NOT BE REPRODUCED, COPIED OR USED IN ANY MANNER WITHOUT THE PRIOR WRITTEN CONSENT OF ACCURATE INNO TECH INC.

SEE NOTE	FINISH	Q'TY
SEE NOTE	SEE NOTE	

东莞市腾兴电子有限公司			
TITLE: SMD DC POWER JACK		PART NO.: DCT0-00043D	
DR: Ricky 2018/10/01		DWG NO.: AT0-00043D	
CHKD: Ricky 2018/10/01		SCALE	SHEET
APPD:		1:1	1/1
		REV.	CUSTOMER DRAWING
		A	