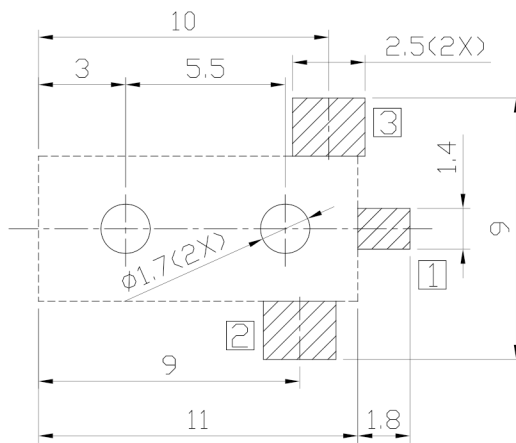
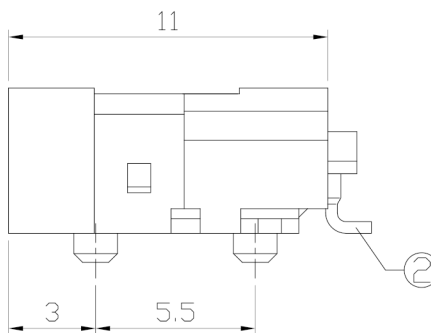
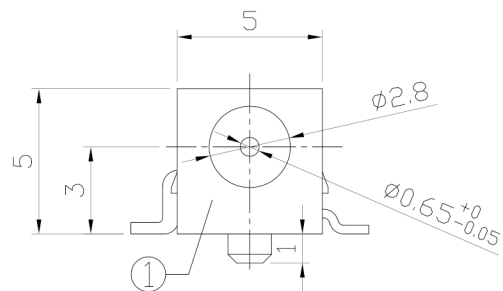




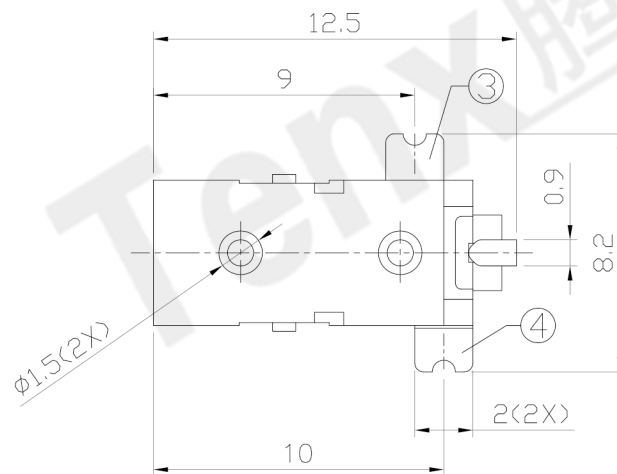
RoHS Compliant
2002/95/EC

REV.	ECN.	NO.	APPD.

DIMENSIONS

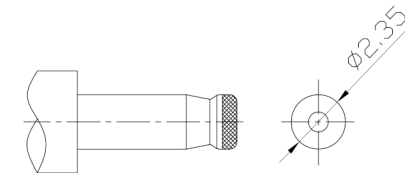
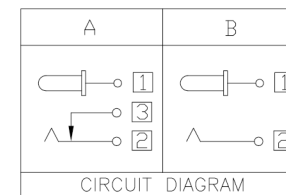


RECOMMENDED P.C.B. LAYOUT
UNSPECIFIED TOLERANCE: ±0.05
(TOP VIEW)



MODEL CODE:
DCB0-0011B- A A 9T BK S 0 1
(1): Series type: SMD DC POWER JACK.
(2): Series No.
(3): Schematic option: A, B
(4): Center pin diameter:
A=φ0.65
(5): Material of housing:
9T=PA9T(Standard)
(6): Housing color:
BK=Black
(7): Terminal plating:
S=Silver(Ag)
(8): Special option:
0=No special option
(9): Packing mode:
1=Reel packing

Specification:
1. Rating : DC 30V 1A.
2. Contact resistance : ≤50mΩ
After test: ≤100mΩ
3. Insulation resistance : ≥100MΩ (DC500V).
After test: ≥50MΩ
4. Withstanding voltage : 500VAC.
5. Insertion and extraction force : 3N~30N.
6. life test : 5000cycles min.
7. Operation temperature range : -20℃~70℃
8. Preservative temperature range : -40℃~85℃



DC MATE PLUG

○: ITEM NO. □: TERMINAL NO.

NO.	PARTS	MATERIAL	Q'TY	FINISHING	TOLERANCE	ANGLES	UNITS	mm
④	Shunt terminal ③	Brass t0.4	1	Silver plating	±0.3	±2°	MAT'L	
③	Tip spring ②	Stainless steel t0.25	1	Silver plating			SEE NOTE	
②	Center pin ①	Phosphor bronze	1	Silver plating			FINISH	
①	Housing	PA9T	1	Black			SEE NOTE	
					THESE DRAWINGS AND SPECIFICATIONS ARE THE PROPERTY OF ACCURATE INNO TECH INC AND SHALL NOT BE REPRODUCED, COPIED OR USED IN ANY MANNER WITHOUT THE PRIOR WRITTEN CONSENT OF ACCURATE INNO TECH INC.			
								Q'TY

东莞市腾兴电子有限公司

TITLE:	SMD DC POWER JACK	PART NO.:	DCB0-0011B
DR:	Ricky 2018/06/12	DWG NO.:	AB0-0011B
CHKD:	Ricky 2018/06/12	SCALE	1:1
APPD:		SHEET	1/1
		REV.	A
		CUSTOMER DRAWING	