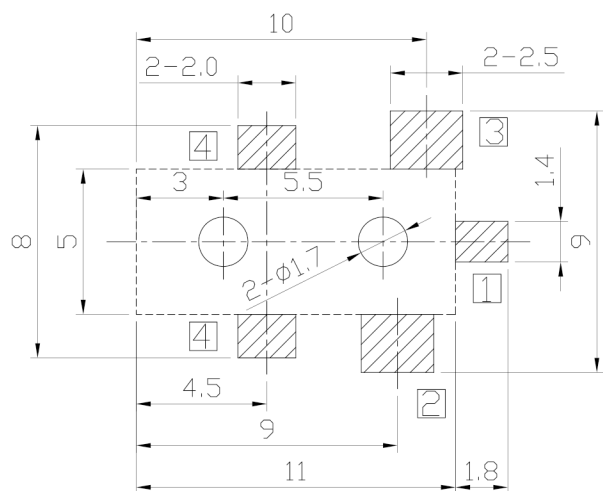
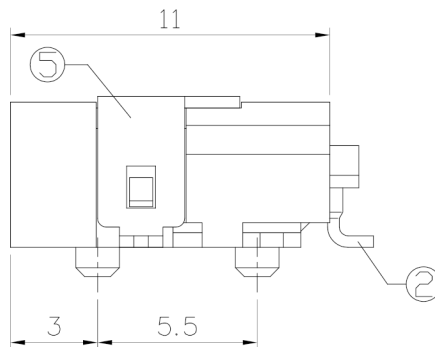
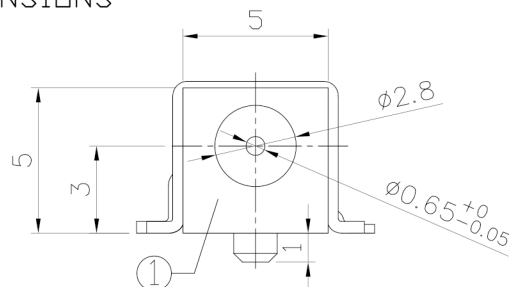




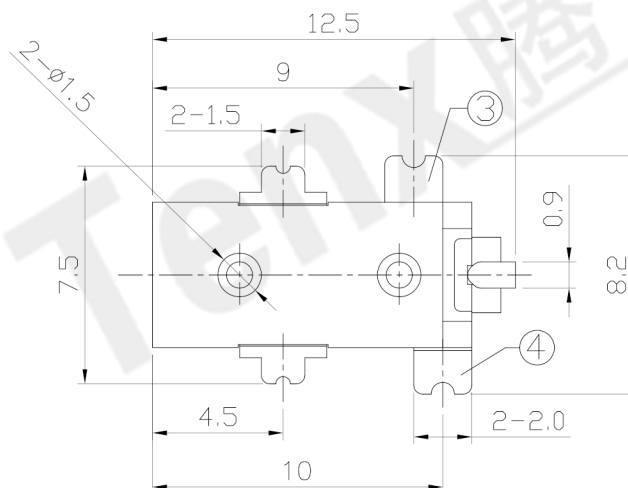
RoHS Compliant
2002/95/EC

REV.	ECN.	NO.	APPD.

DIMENSIONS

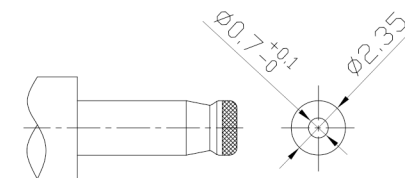
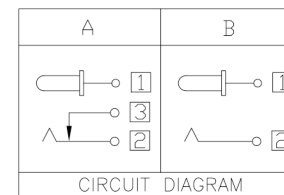


RECOMMENDED P.C.B. LAYOUT
UNSPECIFIED TOLERANCE: ±0.05
(COPPER-SIDED VIEW)



MODEL CODE:
DCB0-0011C- A A 9T BK S 0 1
(1):Series type:SMD DC POWER JACK.
(2):Series No.
(3):Schematic option: A, B
(4):Center pin diameter:
A=φ0.65
(5):Material of housing:
9T=PA9T(Standard)
(6):Housing color:
BK=Black
(7):Terminal plating:
S=Silver(Ag)
(8):Special option:
0=No special option
(9):Packing mode:
1=Reel packing

Specification:
1.Rating : DC 30V 1A;
2.Contact resistance: ≤50mΩ;
After test:≤100mΩ;
3.Insulation resistance: ≥100MΩ (DC500V);
After test:≤50MΩ;
4.Withstanding voltage: 500VAC ;
5.Insertion and extraction force: 3-30N;
6.life test: 5,000 cycles;
7.Operation temperature range:-20°C~70°C;
8.Preservative temperature range:-40°C~85°C;



DC MATE PLUG

○: ITEM NO. □: TERMINAL NO.

⑤	Shell	④	Brass t0.4	1	Silver plating	TOLERANCE	ANGLES	UNITS	mm
④	Shunt terminal	③	Brass t0.4	1	Silver plating	±0.3	±2°	MAT'L	SEE NOTE
③	Tip spring	②	Stainless steel t0.25	1	Silver plating			FINISH	SEE NOTE
②	Center pin	①	Brass	1	Silver plating			Q'TY	APPD:
①	Housing		PA9T UL94V-0	1	Black				
NO.	PARTS		MATERIAL	Q'TY	FINISHING	THESE DRAWINGS AND SPECIFICATIONS ARE THE PROPERTY OF ACCURATE INNOTECH INC AND SHALL NOT BE REPRODUCED, COPIED OR USED IN ANY MANNER WITHOUT THE PRIOR WRITTEN CONSENT OF ACCURATE INNOTECH INC.			

东莞市腾兴电子有限公司

TITLE: SMD DC POWER JACK		PART NO.: DCB0-0011C	
DR: <i>Ricky</i> 2018/06/13		DWG NO.: AB0-0011C	
CHKD: <i>Ricky</i> 2018/06/13		SCALE	SHEET
APPD:		1:1	1/1
		REV.	CUSTOMER DRAWING
		A	