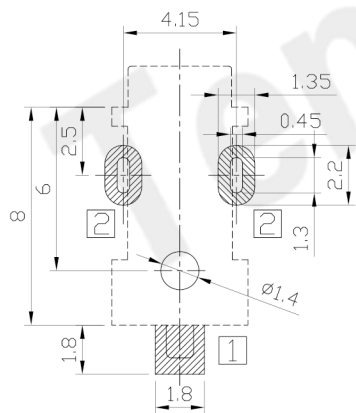
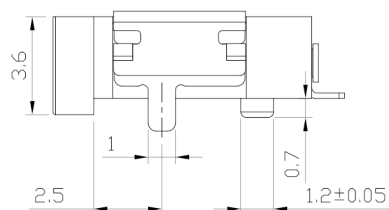
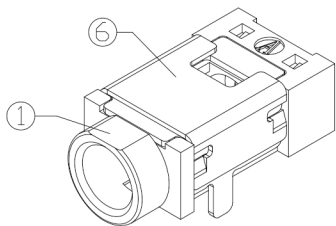
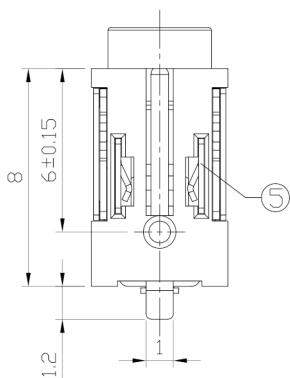
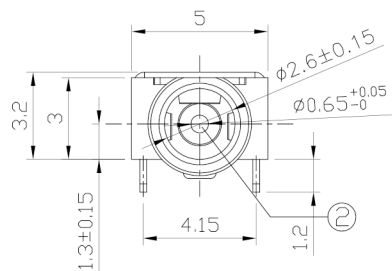
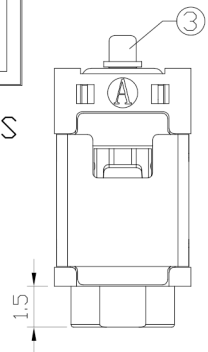


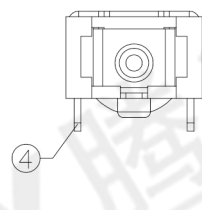


RoHS Compliant
2002/95/EC

DIMENSIONS



P.C.B Layout
(Top view)



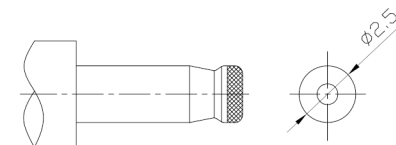
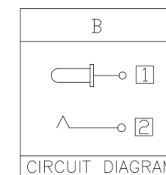
MODEL CODE:

DCB0-01280- B A LC BK S 0 1

- (1):Series type:SMD DC POWER JACK.
- (2):Series No.
- (3):Schematic option: B
- (4):Center pin diameter:
A=∅0.65
- (5):Material of housing:
LC=LCP(Standard)
- (6):Housing color:
BK=Black
- (7):Terminal plating:
S=Silver(Ag)
- (8):Special option:
0=No special option
- (9):Packing mode:
1=Reel packing

SPECIFICATION

- 1.Rating : DC 6V 2A;
- 2.Contact resistance: ≤30mΩ;
- 3.Insulation resistance: ≥100MΩ (DC500V);
- 4.Withstand voltage: 500VAC ;
- 5.Insertion and extraction force: 3-30N;
- 6.life test: 5,000 cycles;
- 7. Operation temperature range:-20℃~70℃
- 8.Preservative temperature range:-40℃~85℃



○: ITEM NO. □: TERMINAL NO.

NO.	PARTS	MATERIAL	Q'TY	FINISHING	TOLERANCE	ANGLES	UNITS
⑥	Shell	Phosphor bronze t=0.25	1	Silver plating			mm
⑤	Spring	Stainless steel t=0.2	2		±0.3	±2°	MAT'L
④	Tip spring	Phosphor bronze t=0.25	1	Silver plating			SEE NOTE
③	Center pin terminal	Brass t=0.2	1	Silver plating			FINISH
②	Center pin	Brass	1	Silver plating			SEE NOTE
①	Housing	LCP	1				Q'TY

THESE DRAWINGS AND SPECIFICATIONS ARE THE PROPERTY OF ACCURATE INNO TECH INC AND SHALL NOT BE REPRODUCED, COPIED OR USED IN ANY MANNER WITHOUT THE PRIOR WRITTEN CONSENT OF ACCURATE INNO TECH INC.



东莞市腾兴电子有限公司

TITLE: SMD DC POWER JACK		PART NO.: DCB0-01280	
DR: <i>Ricky</i> 2018/06/26		DWG NO.: AB0-01280	
CHKD: <i>Ricky</i> 2018/06/26	SCALE: 1:1	SHEET: 1/1	REV. A
APPD:	CUSTOMER DRAWING		