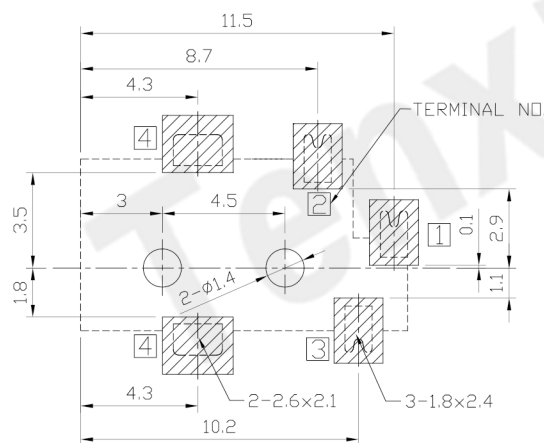
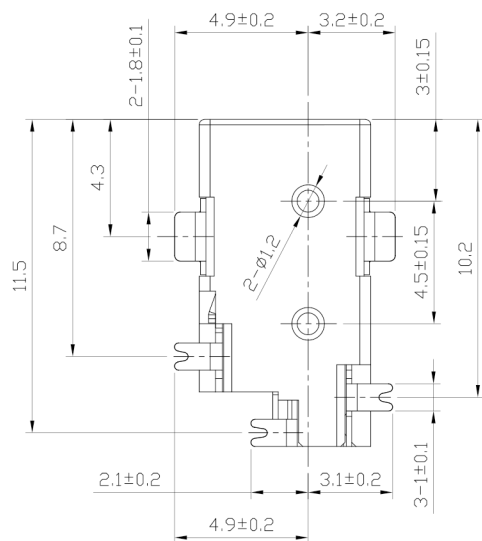
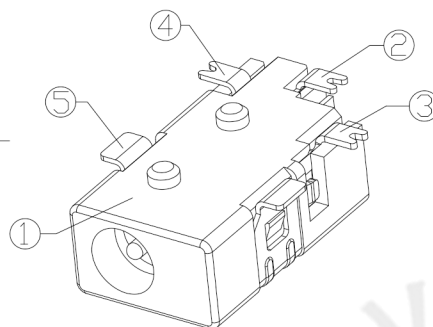
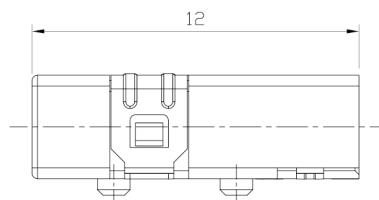
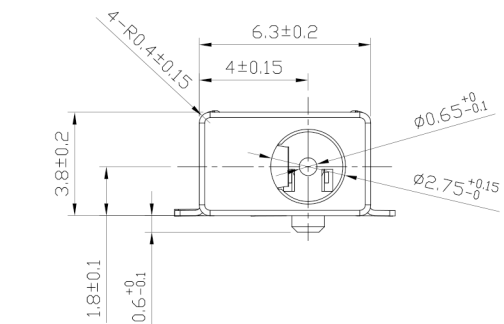




RoHS
Compliant
2002/95/EC

REV.	ECN.	NO.	APPD.

DIMENSIONS



RECOMMENDED P.C.B.LAYOUT
UNSPECIFIED TOLERANCE:±0.05
(TOP VIEW)

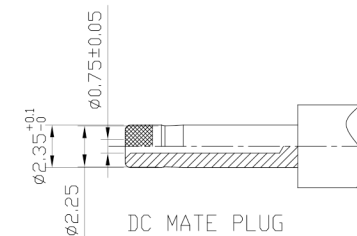
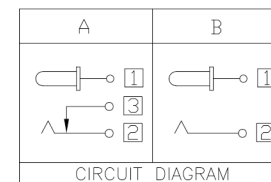
MODEL CODE:

DCB0-01520- A A 9T BK S 0 1

- (1) (2) (3)(4) (5) (6) (7)(8) (9)
- (1):Series type:SMD DC POWER JACK.
(2):Series No.
(3):Schematic option: A,B
(4):Center pin diameter:
A=φ0.65
(5):Material of housing:
9T=PA9T(Standard)
(6):Housing color:
BK=Black
(7):Terminal plating:
S=Silver(Ag)
(8):Special option:
0=No special option
G=With customer mark"GG"
(9):Packing mode:
1=Reel packing

SPECIFICATION

- Rating : DC 12V 2A ;
- Contact resistance : ≤50mΩ ;
After test : ≤100mΩ ;
- Insulation resistance : ≥100MΩ (DC500V) ;
After test : ≤50MΩ ;
- Withstand voltage : 500VAC ;
- Insertion and extraction force : 3-30N;
- life test : 5,000 cycles;
- Operation temperature range:-20°C~70°C;
- Preservative temperature range:-40°C~85°C;



○: ITEM NO. □: TERMINAL NO.

NO.	PARTS	MATERIAL	Q'TY	FINISHING	TOLERANCE	ANGLES	UNITS	mm	东莞市腾兴电子有限公司			
⑤	Terminal	④ Brass t=0.2	1	Silver plating	±0.3	±2°	MAT'L		TITLE: SMD DC POWER JACK		PART NO.: DCB0-01520	
④	Shunt terminal	③ Brass t=0.2	1	Silver plating			SEE NOTE		DR: Ricky 2018/06/26		DWG NO.: AB0-01520	
③	Tip spring	② Stainless steel t=0.25	1	Silver plating			FINISH		CHKD: Ricky 2018/06/26		SCALE SHEET REV. CUSTOMER DRAWING	
②	Center pin	① Bronze t=0.2	1	Silver plating			SEE NOTE		APPD:		1:1 1/1 A	
①	Housing	PA9T,UL94V-0	1	Black			Q'TY					

THESE DRAWINGS AND SPECIFICATIONS ARE THE PROPERTY OF ACCURATE INNO TECH INC AND SHALL NOT BE REPRODUCED, COPIED OR USED IN ANY MANNER WITHOUT THE PRIOR WRITTEN CONSENT OF ACCURATE INNO TECH INC.

