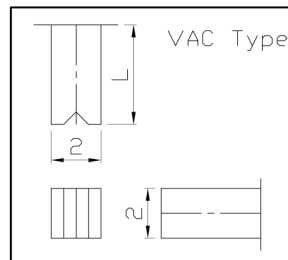
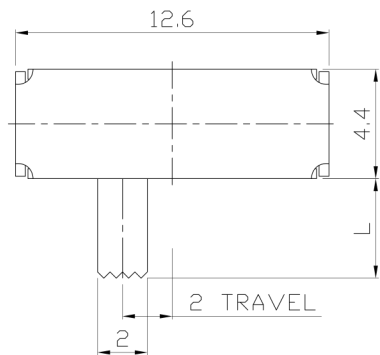




RoHS
Compliant
2002/95/EC

REV.	ECN. NO.	APPD.

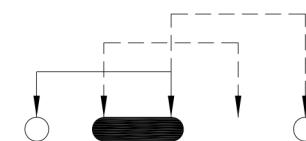
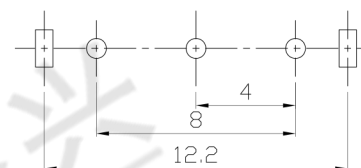
DIMENSIONS



MODEL CODE

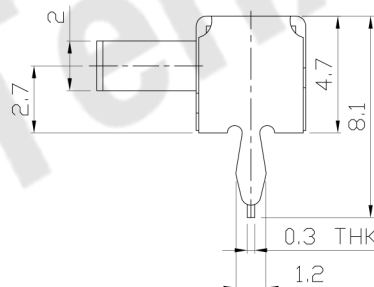
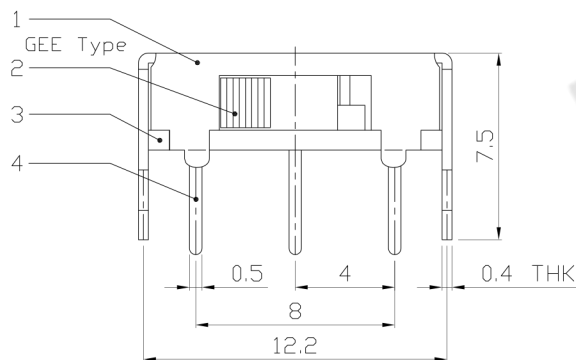
SK-13D02-**GEE**

Knob Type	L(mm)
GEE	~
VAC	~



P.C.B LAYOUT
BOTTOM VIEW

CIRCUIT DIAGRAM



ELECTRO-MECHANICAL CHARACTERISTICS

Refer to additional specifications

RATING	0.3A 30V DC
CIRCUIT	1P3T
CONTACT RESISTANCE	30mΩ MAX.
TIMING	SHORTING
TRAVEL	2mm
OPERATING FORCE	<T1→T2 T3→T2>200±100gf <T2→T3 T2→T1>300±100gf
OPERATING LIFE(cycles)	10,000

8					
7					
6	SPRING PLATE	SUS	1	NATURAL	WITHIN 1.5mm: ±0.1mm
5	CONTACT CLIP	PBS C5210R-EH	1	Ag CLAD	OVER 1.5mm: ±0.2mm
4	TERMINAL	BRASS STRIP	3	Ag PLATED OVER Ni PLATED	
3	BASE	PHENOLIC RESIN	1	NATURAL	
2	KNOB	PDM	1	BLACK	
1	FRAME	STEEL STRIP	1	Ni PLATED	
NO.	PARTS	MATERIAL	Q'TY	FINISHING	

THESE DRAWINGS AND SPECIFICATIONS ARE THE PROPERTY OF ACCURATE INNOVATION INC AND SHALL NOT BE REPRODUCED, COPIED OR USED IN ANY MANNER WITHOUT THE PRIOR WRITTEN CONSENT OF ACCURATE INNOVATION INC.

UNITS	mm	东莞市腾兴电子有限公司			
MAT'L	SEE NOTE				
FINISH	SEE NOTE	TITLE:	SLIDE SWITCH / HORIZONTAL		
Q'TY	SEE NOTE	DR:	Ricky 2015/12/08		
		CHKD:	Ricky 2015/12/08		
		APPD:			
		PART NO.:	SK-13D02		
		DWG NO.:	ADJ-13D02		
		SCALE	SHEET	REV.	CUSTOMER DRAWING
		4:1	1/1	A	